

ROYAL BOROUGH OF GREENWICH INTEGRATED ENFORCEMENT STRATEGIC PLAN 2025 TO 2029



CONTENTS

1. INTRODUCTION

4

FOREWORD

INTRODUCTION

DEFINITION AND STRATEGIC PLAN

INTEGRATED ENFORCEMENT TIMELINE

APPROACH

2. PLAN 2025 TO 2029

14

CURRENT PICTURE

OUR CHALLENGES

THEMATIC AREAS

SEASONAL PRIORITIES

GEOGRAPHICAL LOCATIONS

3. THEMATIC AIMS

20

WOMEN AND GIRLS ARE SAFER AND FEEL SAFER

PEOPLE USING PUBLIC SPACES ARE SAFER FROM
ANTI-SOCIAL BEHAVIOUR AND CRIME

RESIDENTS IN THE BOROUGH ARE SAFE AND
SECURE IN THEIR HOMES

TOWN CENTRES ARE SAFER PLACES FOR PEOPLE
TO SPEND TIME IN

NEIGHBOURHOODS ARE SAFER AND
CLEANER PLACES

COMMUNITY CRIME FIGHTING



FOREWORD

Mission five of the Royal Borough of Greenwich's Our Greenwich Plan sets a clear ambition: "Everyone in Greenwich is safer and feels safer" by 2026

This goal is shared not only by the council but by all members of the Safer Greenwich Partnership—from the Metropolitan Police and London Fire Brigade to housing, health, and community partners. It is also a direct response to what our residents have told us matters most.

The Integrated Enforcement Strategic Plan 2025 to 2029 builds on the achievements of the previous plan and represents our renewed commitment to collaborative, coordinated, and community-driven enforcement. This plan is not about isolated action or siloed teams; it is about aligning our efforts across departments and agencies to respond more effectively to the issues that affect safety and wellbeing in our borough.

Whether it's tackling anti-social behaviour in public spaces, responding to environmental crime, supporting safer homes, improving town centre safety, or making neighbourhoods cleaner and more liveable—this plan ensures our enforcement work is intelligence-led, trauma-informed, and rooted in prevention.

Through a joined-up approach, we will make smarter use of data, align local enforcement with community priorities, and empower residents and businesses to shape safer, cleaner spaces. Our enforcement actions will be fair, proportionate, and effective focused on preventing harm, building trust, and making a visible difference across the borough.

This plan is a live document that we will refresh regularly, monitor outcomes closely, and remain responsive to the evolving needs of our communities. Above all, we will continue to listen—to residents, partners, and frontline teams—and act together to deliver on our shared vision of a safer, cleaner, and more inclusive Greenwich.

Thank you to everyone who has contributed to this plan and to the ongoing delivery of integrated enforcement across the borough.



Cllr Rachel Taggart-Ryan
Cabinet Member Community
Safety and Enforcement



Jamie Carswell
Deputy Chief Executive
& Director of Housing &
Safer Communities

1. INTRODUCTION

The Integrated Enforcement (IE) Strategic Plan 2025 to 2029 sets out the Royal Borough of Greenwich's approach to creating safer, cleaner, and well-maintained communities through collaborative enforcement and preventative interventions.

This document builds on the achievements of the 2021 to 2024 Integrated Enforcement Strategic Plan, adapting to new challenges such as rising retail crime, anti-social behaviour, and environmental crime.

The IE Strategic Plan aligns with the council's Our Greenwich Plan (2023 to 2030) and supports the mission that **"Everyone in Greenwich is safer and feels safer."** It prioritises public safety, community well-being, and environmental standards through a coordinated approach across enforcement teams, community partners, and public engagement.

The plan outlines the current challenges, enforcement actions, partnerships, and monitoring mechanisms.



DEFINITION OF INTEGRATED ENFORCEMENT



Integrated Enforcement (IE) represents the council’s ambition to bring together and enhance **collaboration, coordination, and communication** across all its enforcement services.

Rather than a single, standalone team, IE is a dynamic approach that unites the diverse enforcement teams within the council. This initiative brings together various departments, services, and partners, all working as one cohesive force to drive more effective enforcement strategies.

This collective effort allows the council to function more seamlessly within its own departments, while also extending its reach to external partners, local communities, and stakeholders. The goal is clear: to create a safer, cleaner, greener, and healthier environment for all of Greenwich.

By fostering **collaboration**, council enforcement teams, businesses, and external agencies work together to share valuable intelligence and resources. This co-ordination ensures that enforcement activities are aligned, avoiding duplication and maximising efficiency and impact. **Communication** plays an essential role, fostering transparency and accountability while building trust with the community and stakeholders. Ultimately, this integrated approach helps to enhance public confidence in the council’s enforcement efforts, making a tangible difference in the lives of residents and visitors alike.

IE is based on the Strategic aims of:

1. The wider environment and enforcement regime nudges good behaviours consistently.
2. Known perpetrators can find the support to leave criminal and antisocial activities, for example rehabilitation.
3. Community reassurance exists and is maximised through our presence and activity.
4. Known perpetrators cannot operate in Greenwich because it is too difficult.
5. There are eyes and ears across the entire borough, and good use is made of them.
6. Community reassurance exists and is maximised through our presence and activity.

OUR GREENWICH PLAN

IE aligns with the Our Greenwich plan which focuses on the changes we collectively want to see in our borough and council over the next four years. The plan is structured around five themes, each with a set of specific missions. By 2030:

People: People are living happier, longer, more fulfilling lives and fewer people experience poverty, hardship or inequality.

Place: Royal Greenwich has more housing of higher quality that gives households all financial levels options to call the borough home.

Economy: Royal Greenwich is a more prosperous place. More businesses have chosen to make Royal Greenwich their home, bringing jobs, investment and energy to the economy.

Community: Residents will have a different relationship with the council.

Organisation: Our Council has become a more strategic, efficient and adaptive organisation.



EVOLUTION OF INTEGRATED ENFORCEMENT

INITIAL IMPLEMENTATION AND RECOGNITION

The IE framework was formally introduced to break down silos between enforcement teams and promote a joint approach to tackling crime and anti-social behaviour (ASB). It earned commendations for enhancing multi-agency collaboration and unified enforcement teams, council services, and external partners under one framework.

2019-2020

INITIAL COVID-19 AND THE NEED FOR SEAMLESS COORDINATION AND RECOGNITION

The COVID-19 pandemic underscored the need for integrated enforcement, requiring rapid response, intelligence-sharing, and coordination for public safety. IE played a key role in COVID-related interventions, enforcing public health measures and business compliance while maintaining core services amid challenges.

2020-2021

EXPANSION AND STRENGTHENING THE FRAMEWORK

The IE model became central to the council's enforcement plan, refining priorities and expanding focus areas based on public concerns. The redesigned IE analytical product improved data-driven decision-making and broader input. Love Your Place meetings aligned enforcement efforts with Our Greenwich Missions to enhance community impact and strategic planning.

2021-2024

DELIVERING FOR RESIDENTS IN LINE WITH OUR GREENWICH MISSIONS

The focus was on prevention and early intervention to reduce crime before enforcement, with enhanced intelligence-sharing through digital tools (CCTV, business crime alerts, AI analytics). Ward priorities were aligned with hyper-localised crime analysis, and community engagement was strengthened, empowering residents and businesses in crime prevention.

2025-2029

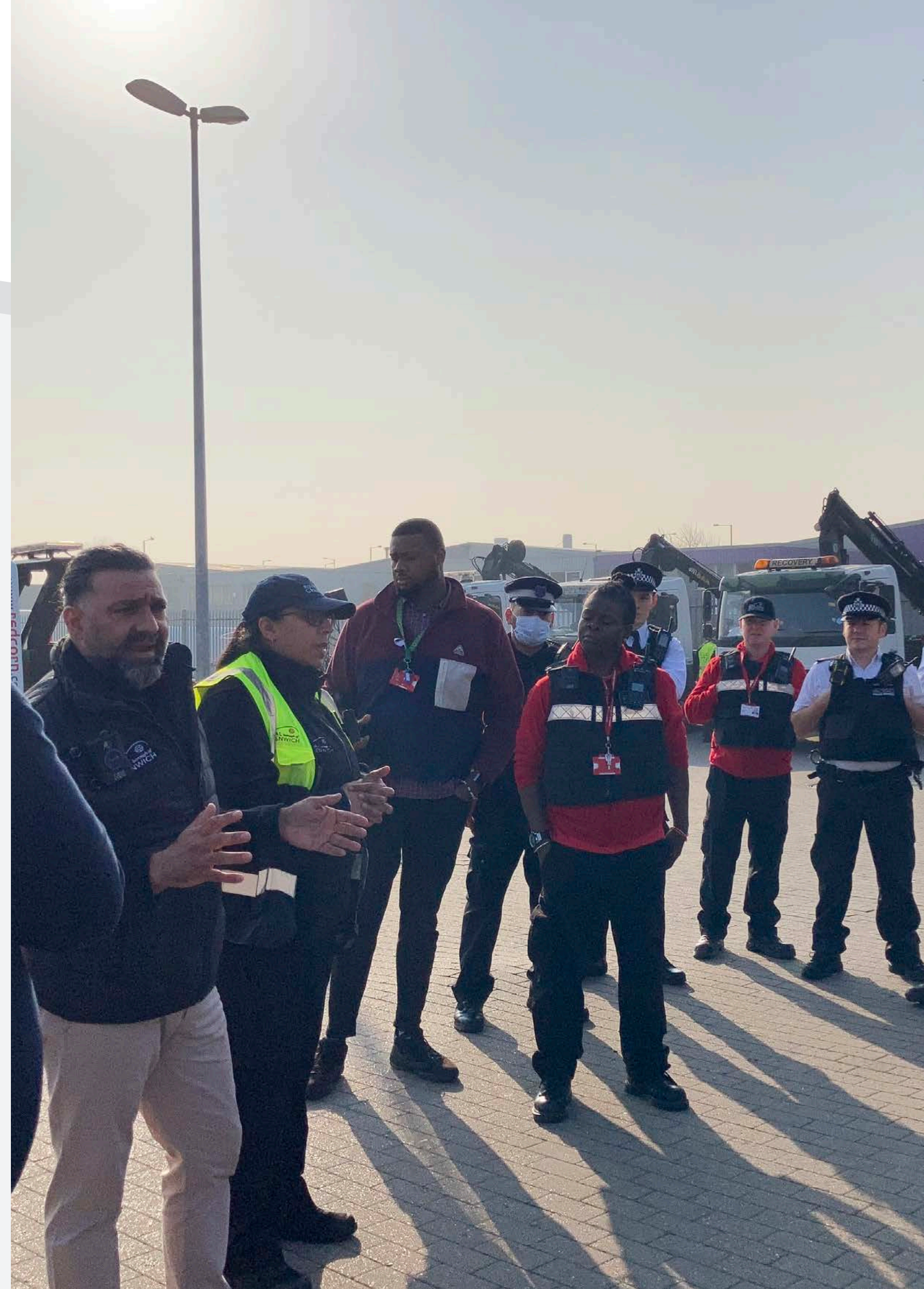
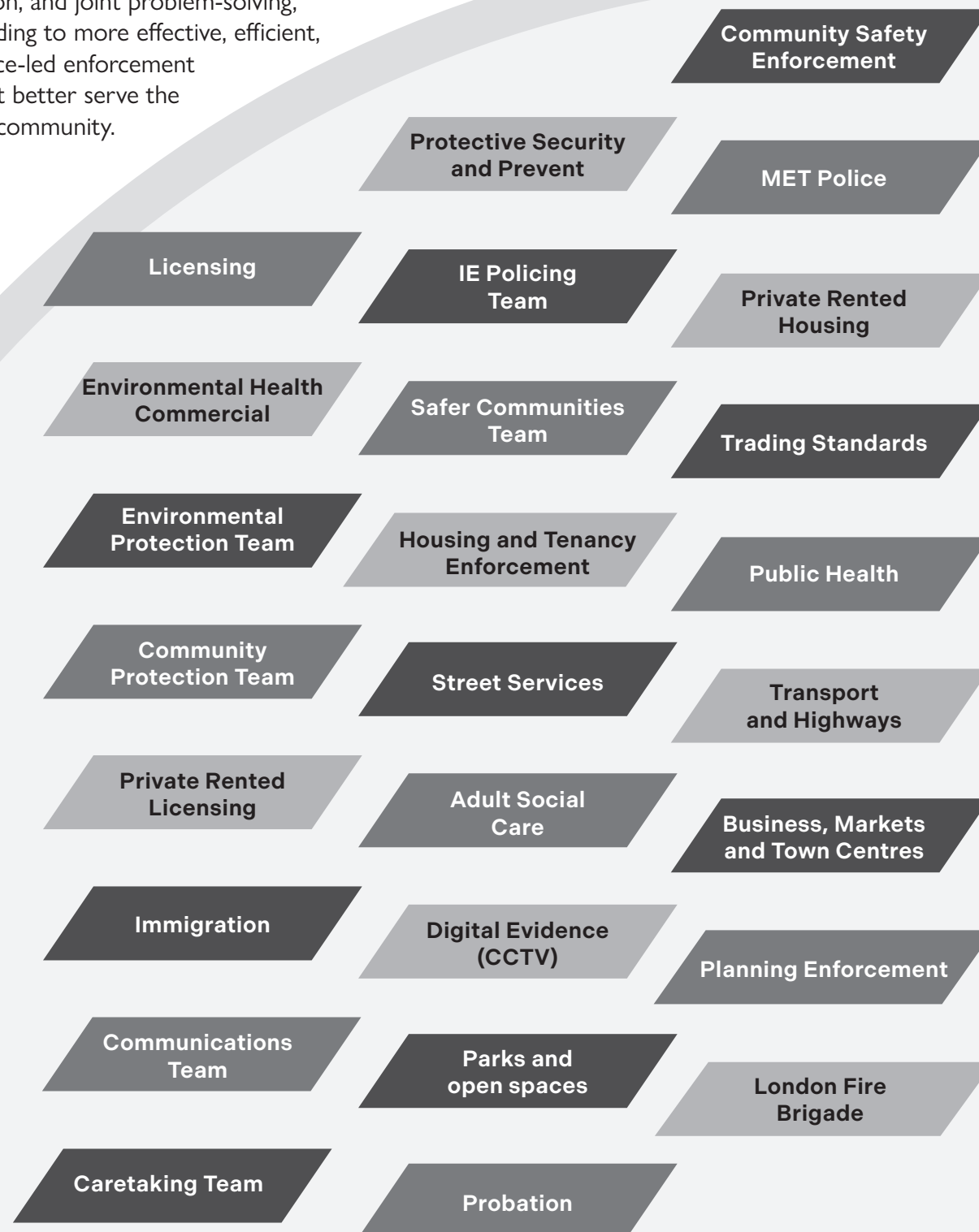


IE PARTNERS 2025-2029

Integrated Enforcement (IE) is not about a single, standalone team, but rather a collaborative and flexible approach that brings together the full spectrum of enforcement partners.

By aligning the efforts of various departments, services, and external stakeholders, IE fosters a unified and coordinated response to enforcement challenges.

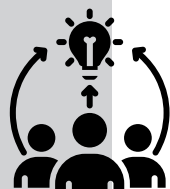
This integrated model encourages shared goals, consistent communication, and joint problem-solving, ultimately leading to more effective, efficient, and intelligence-led enforcement strategies that better serve the needs of the community.



INTEGRATED ENFORCEMENT MODEL

WEEKLY GRIP CALL

Provides an opportunity for enforcement teams, key partners, and intelligence leads to review incidents, assess new intelligence, and ensure a swift and coordinated approach to tackling crime, anti-social behaviour, and other enforcement priorities.



LOVE YOUR PLACE DELIVERY GROUP

Held every eight weeks to coordinate enforcement efforts and oversee problem-solving strategies in high-priority locations. By bringing together enforcement teams and partners to identify trends, escalate critical issues where necessary, and establish targeted problem-solving groups to address specific challenges.



IE PERFORMANCE BOARD

Sets performance indicators, outputs, and outcomes across the six thematic areas, providing a structured approach to measuring impact and progress.



TRAUMA INFORMED APPROACH

As part of our Integrated Enforcement work, we use a trauma-informed approach. This means we understand that some people's behaviour may be shaped by difficult experiences in their past. As well as using enforcement, we focus on safety, well-being, and building trust to support people in making positive changes, by working with them in a fair and flexible way.

WHAT IS TRAUMA?

Trauma is a response to a deeply upsetting or disturbing event that a person finds difficult to handle.

It can lead to feelings of helplessness, a loss of self-confidence, and difficulty feeling or managing emotions.

Trauma is like an emotional wound — a powerful shock that can have long-lasting effects on a person's mind and body.

It's a personal experience, and we may never fully understand what someone else has been through.



THE ROYAL BOROUGH OF GREENWICH PICTURE OVER THE LAST THREE YEARS: 2022 TO 2024

157

The number of **sexual offences** in public places in Greenwich *where the victim was female*.

4,339

The number of **violence with injury** (VWI) offences in public places in Greenwich *where the victim was female*.

2,167

The number of **public space harassment offences** in Greenwich *where the victim was female*.

657

Offences on buses in Greenwich.

40%



of **community protection complaints** were for loud music/entertainment noise.

1 in 10



noise complaints were for DIY noise or property renovation.

Dog barking



complaints fluctuate but remains one of the top complaint categories.

3,331



residential burglaries

Over three years, a total of 3,331 residential burglaries were recorded in Greenwich from 2022 to 2024, averaging about three burglaries per day.

51



Community Trigger Referrals

From 2022-2023 to 2024-2025, community trigger referrals fluctuated, starting at 13, spiking to 25 in 2023-2024, and then returning to 13 again.

342



Abandoned Vehicles were identified by the police.

In 2022, there were 92 abandoned vehicles, which increased to 119 in 2023, and reached 131 in 2024. Abbey Wood, Blackheath Westcombe, and Eltham Town and Avery Hill had the highest numbers per ward, accounting for 20% of all abandoned vehicles.

18,607



Police recorded ASB incidents

Rowdy and inconsiderate behaviour accounted for over 60% of all complaints, followed by rowdy neighbours and vehicle-related nuisance. The most affected areas were Woolwich Arsenal, Greenwich Creekside, and Eltham wards. On average, this equates to around 17 ASB incidents per day.

4,214



Phone thefts and robberies

Between 2022 and 2024, an average of 1,404 were stolen in Greenwich per year in the last three years. iPhones consistently accounted for over 50% of all stolen mobile phones, making them the most targeted brand. Samsung Galaxy phones, while still a significant target, comprised under 14% of the stolen devices each year. This trend highlights the continued high demand and value of iPhones, as well as the steady, though smaller, share of thefts involving Samsung Galaxy models.

Estate fly tipping

costs rose by over £113,000 in just one year - a 12% surge in 2024 to 2025.



An average of nearly £3,000 per day in staff, vehicle and removal costs. Almost half of all costs each year are staffing related.

9,116



Motor Vehicle Crimes

In 2022, there were 3,159 crimes, followed by 2,954 in 2023, and 3,003 in 2024, averaging at around eight offences per day of each year. Theft from and theft of (unauthorised taking) of motor vehicles make up 47% and 53% respectively in the three years.

195



Category 1 hazards

Over the two-year span from 2022-2023 to 2023-2024, a total of 195 category 1 hazards were identified in homes in the borough. The top three major concerns accounting for 57% of hazards were:

- Fire hazards
- Damp and mould
- Excess cold

OUR CHALLENGES

External funding sources (e.g., London Crime Prevention Fund, MOPAC) are crucial for sustainability

Crime affects economic activity, with businesses suffering from theft, ASB, and shoplifting (which has increased in recent years)

Enforcing compliance through Community Protection Warning (CPWs), Community Protection Notice (CPNs), Fixed Penalty Notice (FPNs), and Prohibition Orders while managing legal risks

Responding to demographic changes and increasing public concerns about safety in neighbourhoods

Enforcement efforts are influenced by local and national policing budgets, which determine resource allocation

The council's Medium-Term Financial Strategy (MTFS) influences budget allocation for enforcement services

Aligning enforcement efforts with shifting government policies and national crime reduction strategies

Implementing secure digital platforms that support real-time intelligence-sharing while maintaining GDPR compliance

Building public trust and engagement through community-led initiatives and crime prevention campaigns

Exploring commercial opportunities (e.g. CCTV modernisation) to ensure long-term financial viability of enforcement operations

Adhering to a complex legal framework including PSPOs, licensing laws, and housing regulations

Strengthening communication and collaboration between our enforcement teams and diverse local communities



SEASONAL PRIORITIES

MAR

SPRING

APR

With the arrival of spring, there is a focus on ensuring public spaces remain safe and welcoming. Increased footfall in parks and open spaces means a proactive approach is needed to prevent ASB, noise pollution and nuisance vehicles.

MAY

JUN

SUMMER

JUL

Warmer weather and school holidays bring increased social activity but also heightened risks of street drinking, ASB and related disorder. Enforcement will focus on tackling illegal ice cream sales, unlicensed street vendors, and alcohol-related disturbances, ensuring high-footfall areas remain safe. Patrols in public spaces will be increased to reduce disorderly behaviour.

AUG

SEP

AUTUMN

OCT

Seasonal events such as Halloween and Bonfire Night often see spikes in ASB, including vandalism, firework misuse, and rowdy gatherings in town centres. Targeted enforcement and community engagement help manage these events responsibly. Additionally, residential burglary tends to rise as daylight hours decrease, necessitating increased patrols, crime prevention campaigns, and community safety initiatives.

NOV

DEC

WINTER

JAN

In the winter months, there is a heightened focus on public safety, particularly in response to the challenges posed by darker evenings and the festive season. Women's safety becomes a key priority, with efforts aimed at ensuring well-lit, accessible, and secure environments. The festive period also brings increased activity in town centres, requiring attention to issues such as alcohol-related disorder, retail theft, and business compliance.

FEB

GEOGRAPHICAL PRIORITIES

The four town centres, Plumstead, Woolwich, Eltham, and Greenwich, are key priority areas for integrated enforcement because they are where the biggest mix of issues and people come together. These areas see the most foot traffic, regular complaints about littering, anti-social behaviour, housing problems, and illegal trading, and where lots of regeneration work is happening. Focusing on enforcement here just makes sense, it's where action is most needed, most visible, and where it can make the biggest difference to how safe, clean, and well-run the borough feels.



THEMATIC AREAS

1 WOMEN AND GIRL'S SAFETY IN PUBLIC SPACES

2 PEOPLE USING PUBLIC SPACES ARE SAFER FROM ANTISOCIAL BEHAVIOUR AND CRIME

3 RESIDENTS IN THE BOROUGH ARE SAFE AND SECURE IN THEIR HOMES

4 TOWN CENTRES ARE SAFER PLACES FOR PEOPLE TO SPEND TIME IN

5 NEIGHBOURHOODS ARE SAFER AND CLEANER PLACES

6 INTEGRATED ENFORCEMENT POLICE TEAM



WOMEN AND GIRL'S SAFETY IN PUBLIC SPACES



OVERVIEW

Women’s safety in public spaces is a major concern. Women and girls face a higher risk of harassment, violence, and abuse, which greatly affects their well-being, freedom, and quality of life.

It’s crucial that women feel safe when they are out in places like streets, transport hubs, and in their neighbourhoods. To achieve this, we need to focus on both reducing risks and ensuring women feel secure.

The main goal is to stop violence and harassment against women. This can be achieved by preventing these issues, introducing stricter rules, and creating a culture where women’s safety is the top priority. Women should be able to go anywhere without the fear of harm.



MISSION

5

Everyone in Greenwich is safer, and feels safer

1

WOMEN AND GIRL’S SAFETY IN PUBLIC SPACES

AREAS OF FOCUS

- ENFORCEMENT
- EDUCATION
- ENGINEERING
- EQUALITIES AND EQUITY
- ENGAGEMENT AND EMPOWERMENT

WE AIM TO

1. Increase high visibility patrols
2. Enhance safety
3. Enforce the Public Space Protection Orders (PSPO)
4. Deliver educational programmes/roadshows
5. Promote, raise awareness and engage
6. Explore CCTV solutions
7. Support survivors



ACHIEVEMENTS SINCE OUR LAST PLAN

6

Believe delivered the Beam Programme in 6 Royal Greenwich primary schools, boosting self-confidence and exploring education and career goals with **20 pupils per session.**

Secured **White Ribbon accreditation** to end violence against women and girls in the workplace.



Dec 2023

Council **VAWG officer issued the first FPN** to a male for making obscene/sexual comments.

The Sunflower Circle delivered a community conference on 5 December and launched a digital arts campaign.



Conducted reassurance patrols with police VAWG colleagues at hotspot locations.

Hosted a **violence against women and girls-themed event** in November 2023 at the Peninsula, focusing on safety awareness.

Dec 2023

Violence Against Women and Girls (VAWG) Symposium delivered to RBG frontline staff.

Jui-jitsu sessions delivered weekly for young females and women over 25.

12

Workshops on healthy relationships were delivered, following a play on sexual harassment and misogyny commissioned from Little Fish Theatre Company across seven schools, reaching 1,985 young people aged 10 to 16.

16

Days of Activism saw the launch of a Women's Public Safety film, shown in public spaces like hospitals, children's centres, and health centres.

Implemented the MET police **'Walk and Talk' initiative for women and girls** in public spaces, focusing on areas of concern like transport hubs, universities, and colleges.

Oct 2023

New PSPO launched in Oct 2023 which included enforcement against **unacceptable behaviour towards women.**

Public safety QR code was launched to provide a directory of support/advice that can assist residents who have witnessed or been a victim of crime.

Raised awareness and advised pubs in Greenwich and Eltham around drink spiking and the **Ask for Angela scheme.**



16

Days of activism were dedicated to delivering a series of roadshows aimed at increasing awareness and encouraging male council officers to become ambassadors.

The Women's Community reference group (Sunflower Circle) organised a light walk and rally on the anniversary of Sabina Nessa's murder.



Jun 2024

Saw the launch of sexual harassment pamphlets and floor stencils in all town centres.

KEY OBJECTIVES

EDUCATION

Delivering positive behavioural change in our schools, workplaces and universities.



ENGINEERING

Making places safer through physical improvements and targeting areas of concern.



ENFORCEMENT

Addressing offending through on-the-ground presence of police and council enforcement officers, rule setting and appropriate use of legislation.



EQUALITIES AND EQUITY

Ensuring women and girls from all backgrounds are better able to access key council and partnership services which are more tailored to their individual and intersectional collective needs. Equally, taking steps to maximise the standard and consistency of service delivery across all council departments.



ENGAGEMENT AND EMPOWERMENT

Raising public awareness around gender-based violence and improving community participation.



KEY STAKEHOLDERS

Creating safer environments for women requires a collaborative approach, bringing together key stakeholders to enhance safety, prevention, and support systems. This includes efforts to prevent crime, monitor public spaces, respond effectively to incidents, provide secure housing options, improve community infrastructure, and ensure safe transportation.



ADULTS SOCIAL SERVICES

DIGITAL EVIDENCE TEAM

HOUSING AND TENANCY

LICENSING

CHILDREN'S SERVICES

COMMUNITY SAFETY ENFORCEMENT TEAMS

TRADING STANDARDS

COMMUNICATION AND ENGAGEMENT

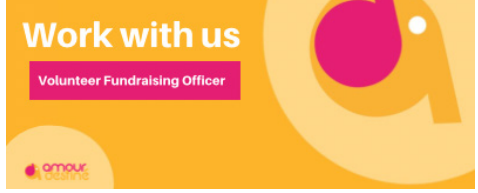
TRANSPORT AND HIGHWAYS

SAFER COMMUNITIES TEAM

We will...

- enhance safety by carrying out Environmental Visual Audits in areas of concern
- increase high visibility patrols in key hotspot areas to deter harassment
- deliver a series of roadshows during the 16 Days of Action to raise awareness
- promote council officers to become Ambassadors for women's safety
- encourage businesses to sign to the Women's Charter
- deliver educational programs in schools to challenge behaviour and promote respect and equality
- enforce the PSPO against misogyny to demonstrate zero tolerance
- implement a Community Camera Network with key stakeholders of CCTV within the borough
- explore innovative CCTV solutions (including analytics and thermal imaging)
- raise awareness of support services and reporting processes
- empower women by distributing personal safety equipment
- deploy a Visual Messaging Board to share safety messages and community updates
- liaise with communities and faith groups to ensure inclusivity and build trust
- promote the use of the Police Street Safe App enabling the public to flag unsafe areas
- review and design bus stands, installing anti-harassment signage
- support women who are victims of hate crime
- encourage premises to include VAWG/WAVE/ Anti-spiking conditions in Licensing applications.

External Partners



PEOPLE USING PUBLIC SPACES ARE SAFER FROM ANTISOCIAL BEHAVIOUR AND CRIME



OVERVIEW

Public spaces, such as parks, high streets, and transport hubs, are important for bringing communities together. They provide places for recreation, social interaction, and business activities.

However, these areas can sometimes become hotspots for anti-social behaviour (ASB) and crime, including vandalism, public drinking, aggressive behaviour, theft, assault, and drug-related offences. These issues not only pose safety risks but also make people feel unsafe and less likely to use these spaces. A joint approach is needed to tackle these problems, prevent crime, and help everyone feel safer and more confident in their area.

The main goal is to reduce anti-social behaviour and crime in parks, high streets, and transport hubs by taking proactive action, improving the environment, and engaging with the community.



MISSION

5

Everyone in Greenwich is safer, and feels safer

2

PEOPLE USING PUBLIC SPACES ARE SAFER FROM ANTISOCIAL BEHAVIOUR AND CRIME

AREAS OF FOCUS

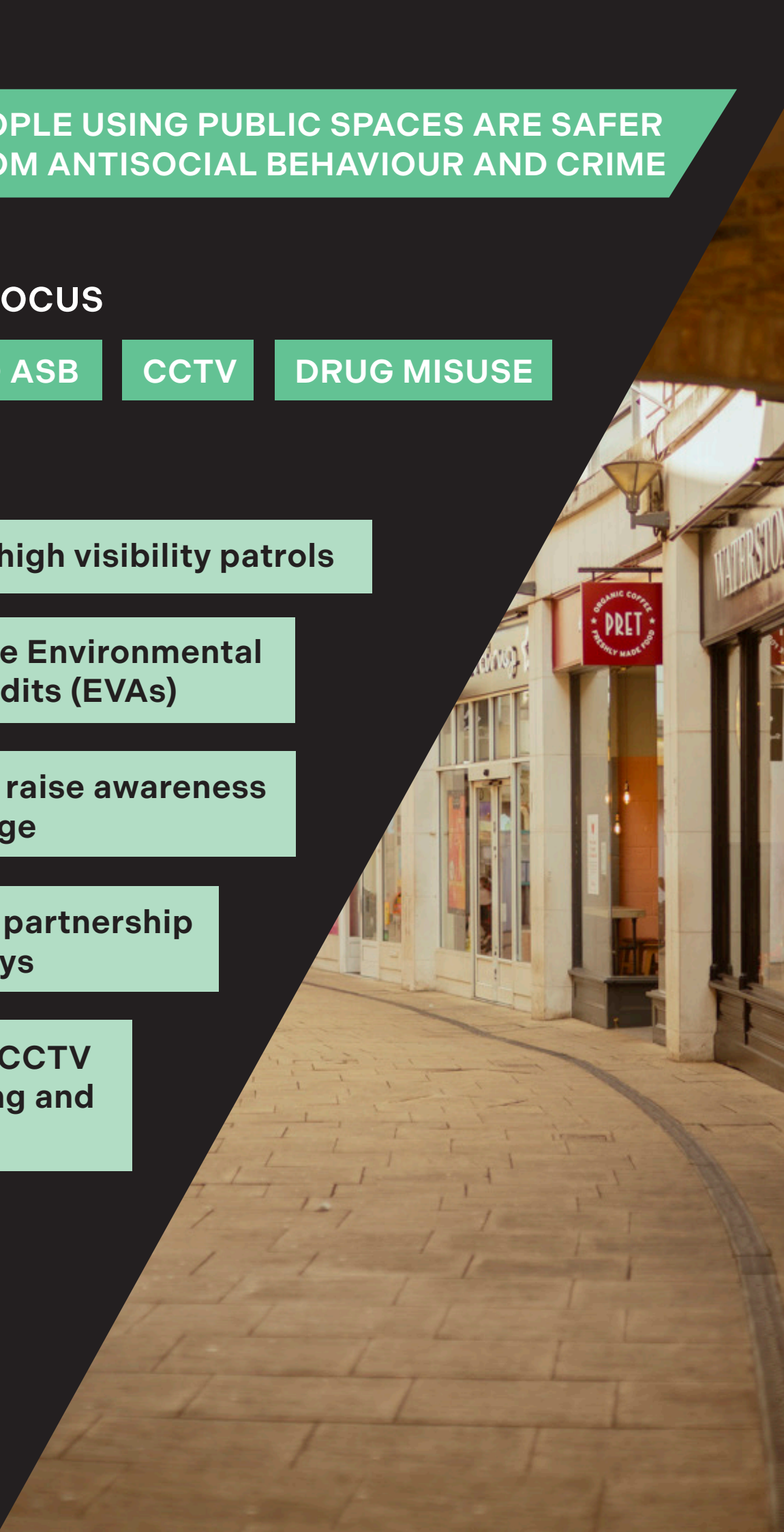
CRIME AND ASB

CCTV

DRUG MISUSE

WE AIM TO

1. Increase high visibility patrols
2. Undertake Environmental Visual Audits (EVAs)
3. Promote, raise awareness and engage
4. Organise partnership action days
5. Enhance CCTV monitoring and coverage



ACHIEVEMENTS SINCE OUR LAST PLAN

14

The O₂ arena

Events at the O2 have been covered by the Safer Spaces Team since September 2023. During these events, the team issued **139 Fixed Penalty Notices (FPNs)** for littering, vehicle misuse, and drug-related offences. They also supported O2 security by **de-escalating incidents, gathering intelligence** on individuals linked to anti-social or criminal behaviour, **dispersing illegal street traders**, and **enhancing collaboration** with the O2 team and local partners.

Jan
2022

A premises on Parry Place was issued with a Community Protection Notice (CPN) due to Anti-social behaviour (ASB) (street drinking, drug misuse and loud music) directly outside and inside their store. A total of ten CPWs and two CPNs were issued to individuals seen to be causing harassment, alarm and distress.

2023
to
2024

35 Community Protection Warnings (CPWs) were issued in for ASB with only seven escalating to CPNs. Safer Spaces held a strong 80% success rate with CPWs not requiring escalation.

**THIEVES
OPERATE
IN THIS AREA**

HAVE YOU LOCKED YOUR
VEHICLE AND REMOVED
ANY VALUABLES?

Remove tools, laptops, mobile phones, coats, sunglasses and sat-nav systems from display and store them safely.



Apr
2024

Criminal Behaviour Order granted to male who was persistently aggressively begging. The conditions were boroughwide. Thanks to the Town Centre Police team for putting the order together.

436

Fixed penalty notices were issued for street drinking within town centres as part of Safer Spaces (including LAS) proactive efforts to reduce this behaviour through enforcement and intervention. In addition, **520 alcohol containers were seized**, avoiding the need for further enforcement. **15 Community Protection Warnings (CPWs)** and **7 Community Protection Notices (CPNs)** were also issued specifically in response to street drinking.

2023-
24

Street Population Outreach

13 vulnerable people supported into Housing during SWEP

5 vulnerable persons supported into permanent Housing

15 people supported into drug treatment

18 people supported into Housing

This is a
Safehaven
Superhub.

Staff inside have been
fully trained to
help you



KEY OBJECTIVES

ENFORCE

Public Space Protection Orders (PSPOs), Community Protection Warnings (CPWs), Community Protection Notices (CPNs) and Fixed Penalty Notices (FPNs) to tackle street drinking and ASB

The council will take action to restrict behaviours that cause nuisance or harm, such as public drinking, drug use, and disorderly conduct. Strict enforcement will help deter these activities and improve overall public order.



STRENGTHEN

Community reporting and intelligence-sharing mechanisms

Encouraging residents and businesses to report incidents and improving intelligence-sharing between police and community partners will better crime prevention efforts. Effective reporting systems will ensure quicker responses and more targeted interventions.



DEPLOY

High-visibility police and Community Safety Enforcement patrols in ASB hotspots

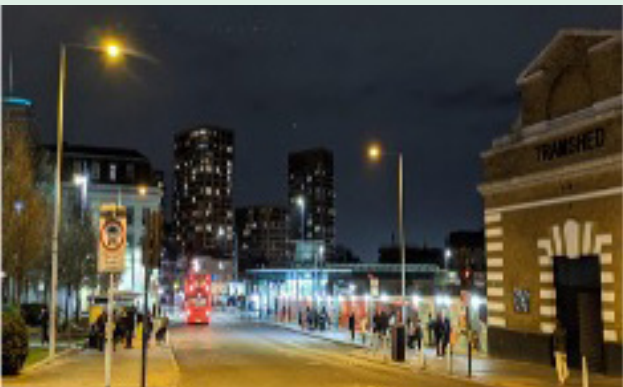
Increasing the presence of police officers and community safety enforcement teams in areas prone to ASB will help both as a deterrent and provide a quicker response to incidents. High-visibility patrols will reassure residents and visitors making them feel safer.



IMPROVE

Public spaces with better lighting, CCTV and environmental design

Well-lit, well-maintained public spaces with strategically placed CCTV cameras and improved environmental design will help reduce opportunities for crime and disorder. Investing in these improvements will make public areas safer and more inviting for everyone.



KEY STAKEHOLDERS

Creating safer public spaces requires a collaborative, multi-agency approach that brings together various stakeholders, including police, local government, and community organisations.



TRANSPORT AND HIGHWAYS

ENVIRO-CRIME

LICENSING

PARKS AND OPEN SPACES

HOUSING AND TENANCY

COMMUNICATIONS AND ENGAGEMENT

PLANNING

DIGITAL EVIDENCE TEAM

PUBLIC HEALTH

COMMUNITY SAFETY ENFORCEMENT TEAMS

We will...

- engage with vulnerable groups to understand concerns
- increase high visibility patrols to deter crime and reassure the public
- carry out Environmental Visual Audits to identify and address areas of concern
- implement Designing out crime principles in public spaces
- enhance CCTV monitoring and coverage
- deploy mobile CCTV vehicle in hotspot areas when appropriate
- arrange partnership action days (involving patrols, clear ups, weapons/drug sweep)
- improve information and intelligence sharing amongst partner agencies
- improve planning for better access and use of parks and open spaces
- promote community awareness of drug and alcohol services.

External Partners



**METROPOLITAN
POLICE**



**Immigration
Enforcement**



**TRANSPORT
FOR LONDON**



**BRITISH
TRANSPORT
POLICE**



**HM Prison &
Probation Service**

**RESIDENTS IN THE
BOROUGH ARE
SAFE AND SECURE
IN THEIR HOMES**



OVERVIEW

A safe and secure home is crucial for residents' well-being, stability, and quality of life. However, many households face threats such as burglary, vandalism, domestic abuse, environmental hazards, doorstep crime, scams, unsafe products and the misuse of vulnerable people's homes for criminal activity.

To address these issues, a joint approach is needed that combines crime prevention, support for victims, and rigorous enforcement of housing and consumer standards.

Efforts should focus on identifying problematic properties, protecting vulnerable individuals from exploitation, and ensuring landlords, housing providers and traders meet their responsibility to maintain safe homes.

The main goal is to strengthen home security, increase police and community patrols, decrease the availability of unsafe products and encourage resident involvement so people feel safer in their homes.

MISSION

6

People in Greenwich have access to a safe and secure home that meets their needs

3

RESIDENTS IN THE BOROUGH ARE SAFE AND SECURE IN THEIR HOMES

AREAS OF FOCUS

RESIDENTIAL BURGLARY

ROGUE TRADING

NO HOME FOR HARM (NH4H)

ADDRESSING PROBLEMATIC PREMISES

WE AIM TO

1. Increase high visibility patrols

2. Promote partnership working

3. Promote, raise awareness and engage

4. Enhance CCTV monitoring and coverage

5. Support victims

6. Address HMO breaches

7. Deter offending

8. Encourage growth

ACHIEVEMENTS SINCE OUR LAST PLAN

18

Properties across the borough were identified after police warrants were executed, leading to the implementation of the 'No Home for Harm' protocol. Eight registered housing providers and the Royal Borough of Greenwich signed up to take legal action against tenants who use their accommodation for illegal activities.

Parcel theft prevention tips shared through social media and resident bulletins. Posters displayed in registered social landlord and private buildings across Greenwich Peninsula, a known hotspot.

2023

Closure of premises being used as 24-hour meeting house for drug users; and subsequent extension of the Closure Order.

Summons issued through the Single Justice Pack route for breaches of a noise abatement notice in Well Hall Road. The prosecution was successful for two breaches of the notice and the person responsible fined £220 and ordered to pay costs and a victim surcharge totalling £438.

2024 to 2025

Continued online and physical visits to letting agents have resulted in financial penalties totalling £31,250 being issued in the past year.

Burglary prevention campaign launched to educate residents on protecting their homes from burglaries.



2021 to 2022

Joint operations with IE colleagues have resulted in successful financial penalties on rogue landlords and agents, with the highest fine being £25,000 for an offence.

20

Properties were targeted in 2023 to 2024 as the Safer Spaces team supported police and council colleagues with warrants, forced entry, Closure Orders, and evictions against problematic premises.

On 26 September 2024, the council secured a closure order for a property in Woolwich, SE18 following joint operations by the Integrated Enforcement Team, Woolwich Dockyard Police, and other partners. The order, granted by Bexleyheath Magistrates Court, was supported by drug warrants that led to the seizure of drugs, weapons, and cash, along with targeted stop-and-searches linked to the address. The property had long been linked to drug activity and violence, making its closure a major step in improving community safety.

Sep 2024

Seizure and prosecution for breaches of Noise Abatement Notice at Lawson House.

KEEPING RESIDENTS SAFE IN THEIR HOMES

HOW WE KEEP PEOPLE SAFE

We check and fix bad housing, so people have safe places to live.

Fire safety and shared houses (HMOs) – we make sure homes have fire alarms and safe exits.

Damp, cold and broken buildings – we check homes for mould, cold rooms, or unsafe structures.

Stopping unfair evictions – we protect renters from being kicked out without warning.

Energy efficiency – we help homes use less energy to lower bills.

Inspections and investigations – we visit homes to check they follow the rules.

If landlords don't fix problems, we can:

- send official warnings
- fine them
- take them to court.

WHY WE KEEP PEOPLE SAFE

Bad housing can be dangerous!

Fires – If alarms don't work, people can get trapped.

Illness – Damp and cold homes make people sick.

Overcrowding – Too many people in small spaces can be unsafe.

Bad landlords – Some landlords try to force people out unfairly.

Better housing helps...

people stay **healthy**
children do better in **school**
less **crime** and **anti-social behaviour**



KEY OBJECTIVES

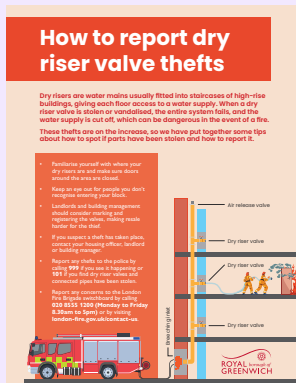
PREVENT

Theft, vandalism and fire safety risks

Offer home security advice and distribute personal safety equipment.

Raise awareness around burglary prevention, parcel theft, and the growing issue of dry riser valve theft—which puts fire safety at risk and has cost the council nearly £40,000 in repairs.

Promote crime prevention tools like smart water marking.



ENFORCE

Landlord regulations to ensure safe housing

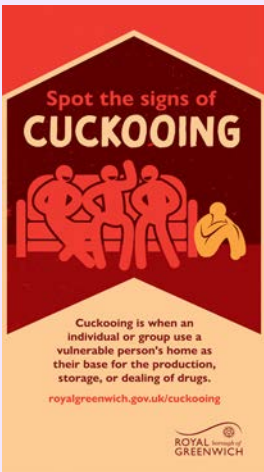
Poorly maintained housing poses safety risks, such as faulty wiring, mould, and fire hazards. Strict enforcement of landlord regulations, including regular inspections and penalties for non-compliance, will ensure properties meet safety standards and protect tenants from neglect and hazardous living conditions.



TACKLE

Problematic premises

Efforts will focus on identifying and disrupting properties misused for crime, including drug dealing, exploitation, or cuckooing. Local authorities, police, and housing teams will take joint action using Closure Orders, eviction powers, and safeguarding referrals to panels such as No Home for Harm or the Problem Premises Panel.



ENCOURAGE

Community-led safety initiatives and engagement

Empower residents to be more vigilant and proactive in preventing and reporting crime through Neighbourhood Watch.

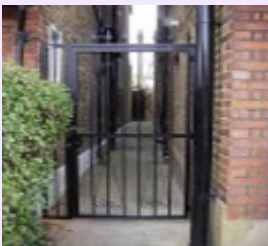
Expand pop-up stalls and community engagement events—particularly during campaigns like ASB Awareness Week—to enable direct resident engagement.



IMPROVE

Street lighting and alley gating in residential areas

Poor lighting and unprotected alleyways can create opportunities for criminal activity. Upgrading streetlights, undertaking Environmental Visual Audits, installing motion-sensor lighting, and implementing alley gating will help to reduce areas where crimes can occur. These measures also improve visibility for residents and Police, making communities feel safer.



KEY STAKEHOLDERS

Creating safer homes requires collaboration between various organisations, ensuring a coordinated approach to crime prevention, housing safety, and resident support.



HOUSING AND TENANCY

DIGITAL EVIDENCE TEAM

PRIVATE RENTED HOUSING

PLANNING

SAFER COMMUNITIES TEAM

COMMUNITY SAFETY ENFORCEMENT TEAMS

COMMUNICATIONS AND ENGAGEMENT

We will...

- increase high visibility patrols in hotspot areas
- respond to and investigate reports of rogue door-step traders
- use mobile CCTV and Automatic Number Plate Recognition (ANPR) in hotspot areas to support enforcement and gather evidence
- raise awareness of issues like cuckooing and dry riser theft through training and local campaigns
- support victims of crime and ASB, making referrals to panels like No Home for Harm and Problematic Premises Panel
- distribute crime prevention materials, like alarms, posters, smart water, and leaflets, to affected buildings and residents
- carry out joint visits with police and ASB teams to deal with noise complaints and other home-based issues
- work with scrap yards and the Environment Agency to tackle dry riser theft and illegal metal trade
- run burglary and dry riser theft campaigns, supported by social media, signage, and possibly reward schemes
- promote Neighbourhood Watch and support residents to challenge suspicious behaviour
- enforce HMO licensing conditions and Planning Article IV direction where relevant.

External Partners



TOWN CENTRES ARE
SAFER PLACES FOR
PEOPLE TO SPEND
TIME IN



OVERVIEW

Town centres should be welcoming, safe, and lively places where people can shop, work, socialise, and relax. However, these areas can sometimes experience anti-social behaviour (ASB), theft, drug-related crime, and disorder, especially in nightlife areas and transport hubs.

These problems not only create safety risks but can also harm businesses, discourage visitors, and affect economic growth.

To make town centres vibrant and welcoming, a focused approach is needed to prevent crime, improve security, and build public confidence.

This can be done through proactive enforcement, stronger partnerships, and better safety measures that support local businesses while ensuring residents and visitors feel safe.



MISSION

12

Town centres, high streets and shopping parades are vibrant, prosperous, well-maintained places that meet the needs of local people

4

TOWN CENTRES ARE SAFER PLACES FOR PEOPLE TO SPEND TIME IN

AREAS OF FOCUS

CRIME AND ASB (TOWN CENTRES)

RETAIL CRIME

LICENSED PREMISES

BUSINESS ENGAGEMENT AND RESILIENCE

WE AIM TO

1. Increase high visibility patrols
2. Strengthen partnership working with businesses
3. Use enforcement powers (CPWS/CPNS /FPNs/PSPO)
4. Enhance CCTV monitoring and coverage
5. Promote, raise awareness and engage



ACHIEVEMENTS SINCE OUR LAST PLAN

29

Intelligence briefings were shared by Safer Business Network (SBN) with the local MPS and council between May 2023 and February 2024, highlighting serious incidents and violent offenders impacting local communities—from youth ASB to violent assaults on staff.

801 Incidents reported

Dec 2023

As part of **Operation Cece**, the IE Team, the council Trading Standards team, and a tobacco detection dog seized 45,500 cigarettes and over 5kg of rolling tobacco from a Plumstead shop, marking a significant success in the ongoing efforts to combat illicit tobacco sales.

1,211 Business Engagements

Since 2020

Illegal ice cream trading has decreased. Community Safety Enforcement Team issued **20 FPNs between 2020 to 2022, which fell to 11 in 2023 to 2024**, showing that a sustained enforcement presence has effectively deterred unauthorised traders.

548 Offenders reported

35

Community Protection Warnings (CPWs) were issued during 2023 to 2024 for ASB with only seven escalating to CPNs. Safer Spaces held a strong 80% success rate with CPWs not requiring escalation.

2022

Saw the introduction of the Street Trading Entertainment Policy and PSPO on amplification, which successfully resolved persistent nuisance busking on King William Walk, eliminating noise complaints and improving the public space.

11 Offenders banned

Jun 2023

The NTT in conjunction with the council Trading Standards team assisted with the recovery and seizure of illegal tobacco and harmful vapes.

A total of 100g Hand rolling tobacco, 132 illegal vapes (some up to 9,000 puffs), 1,237 packs of tobacco were seized from various premises in Plumstead and Woolwich.

62 Intelligence Briefings

337 Bulletins published

Sep 2024

The Integrated Enforcement Team, in collaboration with the council Trading Standards team and a tobacco sniffer dog, conducted visits to three local tobacco shops in Abbey Wood and Plumstead.

All three shops were found to be selling illegal tobacco, along with several illegal vapes—some containing up to 4,500 puffs, far exceeding the legal limit of 600. The shops involved faced prosecution by the council.

106 police engagements

2023 to 2024

Street population outreach

13 vulnerable people supported into Housing during SWEP

5 vulnerable persons supported into permanent housing

15 people supported into drug treatment

18 people supported into housing

KEY OBJECTIVES

INCREASE

Police and community enforcement patrols to prevent crime and ASB

Regular police and enforcement patrols will target high-footfall areas and ASB hotspots, focusing on issues like aggressive begging, shoplifting, and public disturbances to improve safety and the local environment.



STRENGTHEN

Licensing enforcement for bars, clubs, and late-night venues

Licensed premises are vital to the night-time economy, but poorly managed venues can contribute to crime and anti-social behaviour, public nuisance and underage sales. Stronger enforcement, increased inspections, and targeted action will ensure compliance.



EXPAND

Partnership with businesses to improve shop security and prevent retail crime

Stronger partnership working between retailers, police, and local authorities will ensure better reporting, intelligence sharing, and security measures such as radio link schemes and security training for staff. Businesses will also be encouraged to invest in high-quality CCTV and deterrent measures.



ENHANCE

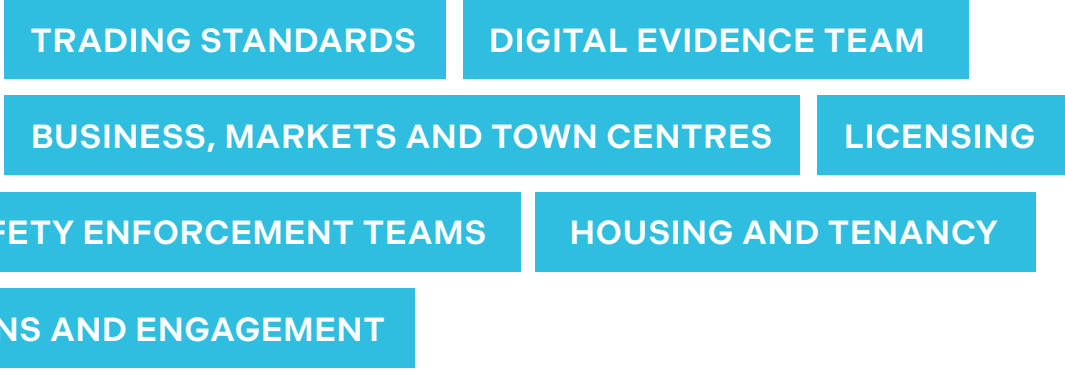
CCTV Surveillance and real-time monitoring for rapid response

CCTV coverage in key areas will help monitor live incidents and provide crucial evidence for prosecutions. The deployment of mobile CCTV, ANPR and CCTV vehicle will monitor and capture intelligence in crime hotspots. Completion of the CCTV modernisation programme will ensure effective ongoing surveillance.



KEY STAKEHOLDERS

Creating safer town centres requires a collaborative approach between multiple stakeholders.



We will...

- increase visible patrols in town centres with additional focus during the evening to reassure the public and prevent issues
- carry out test purchases to catch underage alcohol sales and hold businesses to account
- use CCTV and CCTV vehicles to monitor hotspot areas and support enforcement
- identify offenders and enforce against those involved in anti-social or criminal behaviour
- engage with local businesses to build trust and encourage reporting of crime and concerns
- take action against street drinkers, using PSPO powers where needed
- support licensing reviews, using local crime and alcohol harm data to recommend stronger conditions or revocations
- deliver retail crime communications and support the “Reducing the Strength” strategy in problem areas
- monitor noise and behaviour linked to licensed premises, using police powers and partner support when needed.

External Partners



**NEIGHBOURHOODS
ARE SAFER AND
CLEANER PLACES**



OVERVIEW

Neighbourhoods should be clean, safe, and welcoming places where residents feel proud to live and spend time. However, issues such as anti-social behaviour (ASB), fly-tipping, vandalism, drug-related activity, and poor maintenance of public spaces can affect community well-being and residents' quality of life.

The goal is to create cleaner, safer neighbourhoods by tackling crime, environmental hazards, and ASB, while fostering a stronger sense of community pride and responsibility. This will be achieved through enforcement measures, public space improvements, and collaborative community efforts.



MISSION

9

Neighbourhoods are vibrant, safe and attractive with community services that meet the needs of local residents

5

NEIGHBOURHOODS ARE SAFER AND CLEANER PLACES

AREAS OF FOCUS

- FLY-TIPPING
- LITTERING
- PRIVATE RENTED HOUSING
- ABANDONED VEHICLES

WE AIM TO

1. Reduce fly-tips/waste/ littering
2. Increase high visibility patrols
3. Take enforcement action
4. Inspect private and commercial properties
5. Promote, raise awareness and engage



ACHIEVEMENTS SINCE OUR LAST PLAN

7

Waste-related enforcement notices were issued during Operation 'Stop It,' which targeted fly-tipping along Woolwich Road, SE7. In just two hours, police also addressed traffic violations, seized an uninsured vehicle, conducted four stop-and-searches, uncovered cannabis, and gathered intelligence on suspected drug transport.

3,561

Fly-tips were proactively cleared by Street Services from November 2020 to November 2021, **down from 4,831** the previous year.

64

E-scooter drivers were instructed to dismount and leave the area.

Two FPNs issued as drivers failed to follow instructions.

Majority of the scooter drivers were young males, aged 16 to 24 years old.

Since September 2022

Joint visits with Community Safety Enforcement at Barnfield Estate led to **20 notices issued for abandoned vehicles**. **15** were removed by owners, and five unclaimed vehicles were scrapped—improving safety and cleanliness in the area.

1,525

Vehicles were inspected and **677** vehicles were removed from the public realm Between November 2020 to 2021.

Between 2020-21

Between Nov 2020 to 2021 streets services collected approximately **829.65 tonnes** of fly-tips compared to the previous year of 1186.72 tonnes.

May 2022

Operation Cubo in Blackheath inspected eight commercial vehicles for proper waste documentation. Two formal notices were issued, with non-compliance potentially resulting in £800 penalties.

KEY OBJECTIVES

ENFORCE

Against irresponsible landlords

Strict enforcement of housing regulations will ensure that rental properties are kept in good condition, with penalties for landlords who allow poor housing standards. Mandatory property inspections and licensing schemes will hold landlords accountable. Enforcement action will be taken against residents for poorly maintained / untidy land by issuing Section 215 notices.

LANDLORDS, CHECK IF YOUR PRIVATELY RENTED PROPERTY HAS THE RIGHT LICENCE

You could receive a fine of up to **£30,000** for not having the right licence.

Houses in Multiple Occupation (HMO) property licensing	Single occupancy property licensing
<p>Mandatory HMO Licence</p> <p>Five or more people from two or more households.</p>	<p>Additional HMO Licence</p> <p>Three or more people from two or more households.</p>
	<p>Selective Licence</p> <p>One household, if in Woolwich Riverside, Woolwich Common, Shooters Hill, Plumstead Common or Plumstead Glyndon.</p>

We have started work to identify unlicensed private rented properties. Apply for your property licence today by visiting our new licensing portal: royalgreenwich.gov.uk/apply-property-licence

Visit our website for more details on private rented property licences: royalgreenwich.gov.uk/property-licensing

ENCOURAGE

Community clean up initiatives

Residents play a crucial role in maintaining their neighbourhoods. Education and awareness campaigns will encourage responsible waste disposal and recycling and helping to reduce littering.



TACKLE

Fly-tipping and illegal waste dumping

Fly-tipping and illegal waste disposal creates environmental hazards, attract pests, and degrade public spaces. Stronger fines and penalties will be enforced for offenders, with CCTV monitoring in hotspot areas to deter illegal dumping. The Enviro-Crime Team will continue to actively tackle and remove waste promptly, preventing the build-up of rubbish and maintaining clean streets.



INCREASE

Patrols to prevent vandalism, ASB and public nuisances

Joint patrols and operations between local authority enforcement teams and police will target problem areas, deterring vandalism, drug use, ASB, and abandoned vehicles.



KEY STAKEHOLDERS

Building safer and cleaner neighbourhoods requires a proactive and community driven approach to crime prevention.



PRIVATE RENTED HOUSING

DIGITAL EVIDENCE TEAM

HOUSING AND TENANCY

PLANNING

TRANSPORT AND HIGHWAYS

COMMUNITY SAFETY ENFORCEMENT TEAMS

ENVIRO-CRIME

PRIVATE RENTED LICENSING

We will...

- increase enforcement patrols in hotspot locations
- engage and educate residents on the impact of fly tipping and their responsibilities around waste disposal
- carry out duty of care inspections on commercial premises
- engage with local businesses to foster responsible practices
- carry out vehicle inspections to identify non-compliant vehicles
- inspect private properties to ensure compliance with environmental and housing standards
- ensure properties are properly licensed under the relevant HMO and rental licensing schemes
- ensure properties have the correct planning consent and are policy complaint to be HMOs
- enforce against non-compliant landlords and ensure properties meet safety and living standards.

External Partners



INTEGRATED ENFORCEMENT POLICE TEAM



OVERVIEW

People should feel safe in their homes, neighbourhoods and public spaces. Problems like anti-social behaviour, drug dealing, burglary, violent crime and the exploitation of vulnerable people can make communities feel unsafe.

The aim is to make every area safer by reducing crime, helping those at risk, and building trust with local people. This will be done through regular patrols, joint work with partners, early support for those who need it, and strong local engagement.



MISSION

5

Everyone in Greenwich is safer, and feels safer

6

INTEGRATED ENFORCEMENT POLICE TEAM

AREAS OF FOCUS

CRIME FIGHTING

PARTNERSHIP WORKING

COMMUNITY ENGAGEMENT / REASSURANCE

WE AIM TO

- 1. Reduce crime
- 2. Strengthen partnership working
- 3. Promote, raise awareness and engage
- 4. Be visible in the community



ACHIEVEMENTS SINCE OUR LAST PLAN

803

Stop-and-searches have been carried out by the IEPT since 1 April 2021 – 80 of these by the two C council-funded officers. In addition, four CPWs, five CPNs, and 40 community resolutions for cannabis possession have been issued.

The IE policing team (IEPT) has effectively identified and supported young people involved in drug dealing who may be exploited. Working with social services and the Violent Youth Crime Team, it has secured placements for vulnerable youths and successfully located high-risk missing children who absconded from secure accommodations.

Arrests and charge rates

September 2020 to December 2021: Secured 234 arrests with a 91.5% charge rate.

January 2022 to December 2022: Approximately 130 arrests achieved a 92% charge rate, despite data challenges across multiple systems.

January 2023 to November 2024: 143 arrests, maintaining a 93% charge rate.

100%

Success rate was achieved in reducing disorder during high-risk events, such as Halloween and Guy Fawkes Night in Woolwich, with minimal incidents reported.

5

Obtained and executed search warrants have been carried out by the IEPT since 1 April 2021. The team has also supported other Royal Greenwich Safer Neighbourhood Teams with numerous additional warrants.

Since April 2021

130 Arrests have been made by IEPT officers – these range from serious assaults, public order incidents, drug offences, possession of weapons, driving offences, theft related offences and sexual assaults.

Named runners-up for the Safer Neighbourhoods Team of the Year in October 2022, following a previous win—highlighting their sustained excellence and ongoing community impact.”

Stop and search outcomes

September 2020 to December 2021: Conducted 1,462 stop and searches with a positive outcome rate of 28.9%.

February 2022 to February 2023: Achieved a 40% positive outcome rate from 256 positive stop and searches.

March 2023 to November 2024: Conducted 180 stop and searches, with a 35% positive rate.

100%

Success rate was maintained in reducing overall crime across Royal Greenwich, highlighting their significant impact on public safety.

KEY OBJECTIVES

ENHANCE

Local policing presence

Increasing the visibility of Dedicated Ward Officers (DWOs) and Police Community Support Officers (PCSOs) in every ward will help deter criminal activity and strengthen community trust in police.



TAILOR

Crime reduction plans for each ward

Community led plans will be developed based on local crime priorities, ensuring that responses are targeted and effective. Regular engagement with residents will shape these plans to address the most pressing concerns.



ENFORCE

Against repeat and high-risk offenders

Strengthening intelligence-sharing, collaboration with the council and local organisations will support early intervention measures focusing on offenders who pose the highest risk to community safety, including those involved in burglary, robbery, and violent crime.



IMPROVE

Community engagement and trust

Regular ward panels, public meetings, and feedback initiatives will ensure that residents' voices shape policing priorities. A "you said, we did" approach will be used to communicate the impact of crime-fighting initiatives.



KEY STAKEHOLDERS

Keeping our communities safe means working together, listening to local people, and taking action on the issues that matter most to them.



We will...

- listen to local people and set priorities based on what matters most to them
- be visible in our communities, with dedicated officers in every ward
- focus on the biggest problems, using data and community feedback to guide our actions
- work closely with partner agencies , local authority and community groups to solve local issues
- take action against crime and antisocial behaviour, especially burglary, robbery and other local concerns
- keep people informed by showing what we've done and how it's made a difference.

External Partners



