

# Plumstead Gardens Management Plan 2025-2030



## CONTENTS

<b>PART 1: WHERE ARE WE NOW?</b>	<b>3</b>
Park Address and Contact Details	3
Introduction - What is a Park Management Plan?	4
Description of the Park	5
Access to the Park	6
Heritage of the Park	7
Ecology and Biodiversity	8
Park Infrastructure	10
Recreational and Sporting Facilities	11
Park User Information	15
Management of the Park	16
<b>PART 2: WHERE DO WE WANT TO GET TO?</b>	<b>22</b>
Vision	22
Strengths	22
Challenges	22
Recommendations	22
<b>PART 3: HOW WILL WE GET THERE?</b>	<b>23</b>
Action Plan	23
<b>PART 4: HOW WILL KNOW WHEN WE HAVE ARRIVED?</b>	<b>24</b>
Monitoring and Review	24
<b>APPENDICES</b>	<b>25</b>
Appendix I      Legislation, Policies & Strategies	25
Appendix II     Management Structure Chart	30
Appendix III    Previous Management Plan	31

Please note that all maps and diagrams contained within this document have been derived from the Royal Borough of Greenwich GIS system and are subject to copyright restrictions.

## **PART I: WHERE ARE WE NOW?**

### **PARK ADDRESS & CONTACT DETAILS**

**Name of Site:** Plumstead Gardens

**Address:** Church Manorway  
Plumstead  
London  
SE2 9HP

The Strategy and Development Team can be contacted regarding this plan for any further information (using the contact details provided below).

**Address:** Parks, Estates & Open Spaces  
Oxleas Woods Centre  
Crown Woods Lane  
London  
SE18 3JA

**Tel.** 020 8856 0100

**Email** [parks@royalgreenwich.gov.uk](mailto:parks@royalgreenwich.gov.uk)

**Web site:** <http://www.royalgreenwich.gov.uk>

The Friends of Plumstead Gardens can be contacted at [Plumsteadgardensfriends@gmail.com](mailto:Plumsteadgardensfriends@gmail.com) or via the Friends of Plumstead Gardens Facebook page.



## **INTRODUCTION – WHAT IS A PARK MANAGEMENT PLAN?**

Park Management Plans are documents that set out the manner in which a park should be managed. Therefore, they are an important aid to the efficient and effective management of the parks to which they relate.

Management plans also form part of a process for evaluating performance against agreed standards, consulting and involving people, strategic planning and providing continuity. Individual plans will be specific to each park and will deliver aims and objectives specific to the needs of the local community who will be directly involved in its formulation.

A Park Management Plan also provides an excellent opportunity to collate a wealth of information relating to the park that the management authority possesses, into a single comprehensive document.

### **Purpose of this management plan**

The production of individual management plans for each park is good practice and is in accordance with The Royal Borough's commitment to providing Best Value. Actions from the Management Plan feed into the Parks & Open Spaces Strategy.

This Management Plan will provide a vital resource for parks staff in maintaining and developing Plumstead Gardens as a resource for the community and visitors to the area and as such, will be under constant informal review. This management plan will have a duration of five years, after which this plan will have a complete review with particular reference to its relevancy.

It is envisaged that this plan will help to encourage relationships between The Royal Borough and the community and provide access to information on the management approach to this site as well as providing a framework around which any future decisions concerning this site will be taken.

In addition, it is envisaged that the management plan for Plumstead Gardens will assist with allocating existing and securing additional resources for developments on this site that this management plan specifies.

Future actions/priorities for this site are identified in the Action Plan to this document. This management plan therefore provides a benchmark against which progress can be measured.

This management plan has been prepared in accordance with CABI Space guidance material.

### **Wider Policy Context**

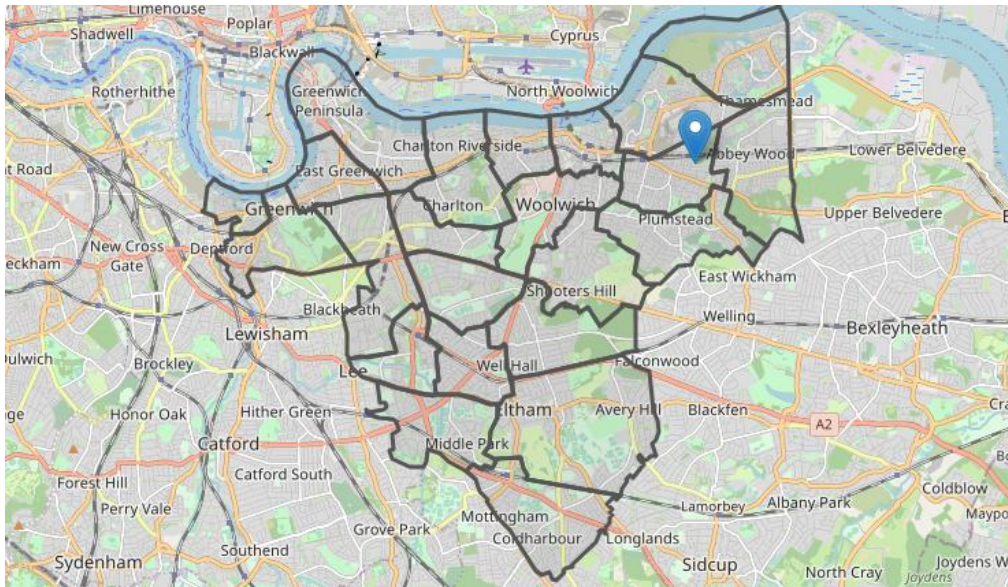
This management plan has been written within the context of a wide framework of national, regional and local policy statements and strategies, the most significant being The Royal Borough of Greenwich's Parks and Open Spaces Strategy.

The main policies and strategies that have a specific impact on this plan are listed in [Appendix I](#).



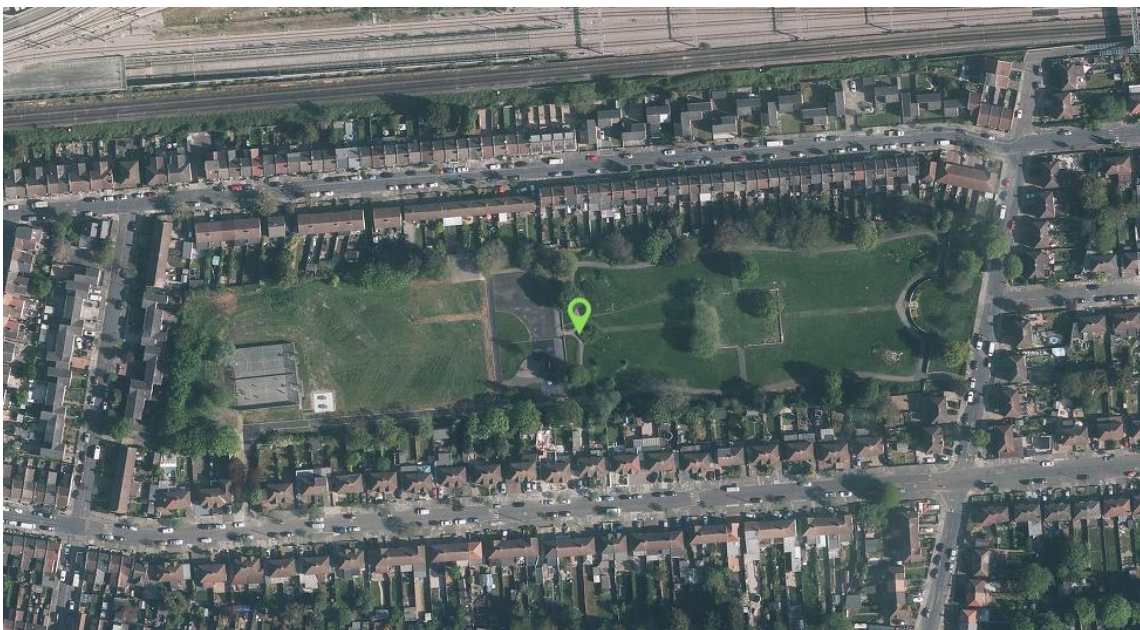
## DESCRIPTION OF THE PARK

Plumstead Gardens is a small park in the Plumstead and Glyndon Ward, found in the northeast area of The Royal Borough of Greenwich. (Please see map below). It is owned and maintained by Royal Borough of Greenwich and there are no leases affecting any part of the park. The Green Space Strategy designates Plumstead Gardens as a local park.



Location of Plumstead Gardens within the Greenwich Borough

The park occupies a total area of 2.5 hectares and contains several recreational facilities including a grass area for informal ball games, a children's playground, an outdoor gym, table tennis tables and a multi-use ball court. The park is covered by CCTV. The park is bordered by residential land on the south, west and north sides and metal railings on the eastern side.



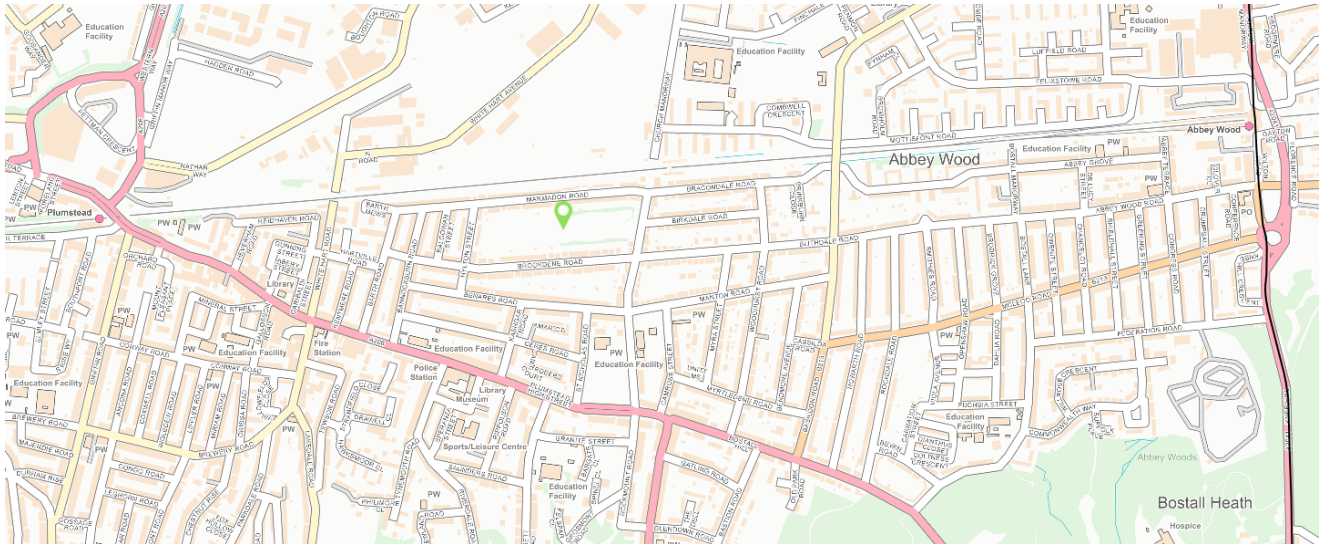
Aerial View of Plumstead Gardens

## **ACCESS TO THE PARK**

Plumstead Gardens is accessible from two gates which are located in Brookdene Road and Church Manorway. The park is open between 9am and dusk.

### **Disabled Access**

There is level access to the park entrances and most of the park is wheelchair accessible via ramps. This park is accessible by public transport although no buses stop directly outside Plumstead Gardens.



Access to Plumstead Gardens

## **Getting to Plumstead Gardens**

### **By Train**

The nearest railway stations are Plumstead and Abbey Wood, which are on the Southern Eastern Network - London to Gravesend via the Woolwich line.

### **By Tube**

The nearest tube station is Abbey Wood, which is on the Elizabeth line.

### **By Bus**

Buses 96, 99, 177, 422 and 469

### **By Car**

The postcode to get to Plumstead Gardens is SE2 9HP (Church Manorway entrance) or SE18 1EH (Brookdene Road entrance). Free parking is available on both these roads and the surrounding neighbourhood.



## HERITAGE OF THE PARK

In 1916, the Ordinance Survey shows that the area that is now Plumstead Gardens was managed as allotment gardens surrounded by the residential dwellings that are in the area now.

After the end of World War Two, Plumstead Gardens was created into an ornamental garden. Features of Plumstead Gardens back then, included a notable area of formal hard landscaping comprising a raised terrace and central bay on an axis with an ornate sunken formal garden with rose beds and pond with a small bridge over it. Anti-social behaviour led to the ornamental pond being drained and filled in approximately 30 years ago and the unique pond bridge being removed.



Formal Gardens with the pond and bridge in the park in June 1967

It is thought that the park at this time also had informal tennis, a paddling pool and roller-skating rink. The Ordinance Survey from 1960 shows that at this time, within the park, the roller-skating rink was located near the paddling pool. No records of this roller-skating rink have been found but it is thought that this was one of two roller skating rinks managed by the Metropolitan Borough of Woolwich, the other being at Queenscroft Park. It is thought that the roller-skating rink was removed sometime in the 1960s possibly because of lack of use.

The Ordinance Survey of 1960 also shows two shelters within the park. One was on the northern boundary near what was the ornamental pond, and one was in the children's play area. Park keepers ceased to be a permanent presence in Plumstead Gardens from about the early 1990s and the toilet block ceased to be in use from the late 1990s. The Park Keeper's building and the old toilet block have since been demolished.

The paddling pool was in also use until approximately the early 1990's. Since then, it was left unused and in a derelict state. In 2022, as part of the £1million Parks Improvement Scheme, funding was identified to use the footprint of the old paddling pool area to extend the playground.

The BMX track was added to the park in the early 1970s. The BMX track was removed in 2010 and the Council secured funding in 2010 to install two multi use games areas, cricket practice nets and refurbishment of the playground.

The cricket nets were removed and replaced with two table tennis tables and an outdoor gym in 2023.

## **ECOLOGY & BIODIVERSITY**

Parks, Estates & Open Spaces aims to promote Plumstead Gardens for recreational use whilst protecting and enhancing the natural habitats it offers. Parks, Estates & Open Spaces is accredited to the ISO 14001. Working to this Environmental Standard allows the Royal Borough of Greenwich to minimise its environmental impact at Plumstead Gardens and increases biodiversity and the presence of wildlife at this park. The Royal Borough of Greenwich and The Friends of Plumstead Gardens aim to maintain, conserve and promote the biological assets in Plumstead Gardens to achieve an appropriate balance between nature and other recreational uses. Although the formal design and recreational use of the park limits the amount of biodiversity on site, good sustainable management practices have ensured that biodiversity within the park has increased.

Sustainable management practices include:

- Installation of bird boxes.
- Minimising pesticide use.
- Recycling all green waste into mulch and reusing on beds.
- Increased mulching of beds and reduced mowing during drought periods.
- Increased use of rechargeable battery-operated hand-held equipment.
- Replanting of the rockery areas to improve biodiversity.
- Leaving dead wood on site.



*Sowing & Growing with Friends of Plumstead Gardens*



The rockery planted up by the Friends Group in 2023 to increase biodiversity in the park.



The practice of leaving felled trees in situ is being maintained where possible in order to increase natural habitats. Large wood is reused to create wood piles where appropriate to increased biodiversity and encourage potential habitats for stag beetles and other invertebrates.

### **Soil Geology**

The underlying soil geology of the park is Thanet sand. Thanet sand is generally porous but tends towards clay and to be more impervious at the base. This gives rise to relatively acid sandy or clay loamy soils.

### **Fauna**

The nature of this garden makes it attractive to a wide range of birds, butterflies and bats. There are also grey squirrels and foxes living in the gardens.



Bulb planting in 2023 with the Friends of Plumstead Gardens

### **Trees**

Plumstead Gardens has a mix of native and non-native trees shrubs. Trees found in the park are Holly, Bay, Willow, Poplar, and conifers. One unusual tree that is found in the park is the Ginkgo balboa, the maidenhair tree.

## **PARK INFRASTRUCTURE**

### **Furniture**

Park furniture within Plumstead Gardens consists of black metal benches, picnic table and litter bins located at strategic points within the park. Members of the public can purchase memorial plaques that can be affixed to benches for a 10-year dedication period. The picnic benches can be found in the playground area and some of which are accessible for wheelchairs.

### **Signage**

There is a “Welcome to Plumstead Gardens” sign at both entrance of the park. There are also signs in the playground. All the signage has the Council’s Emergency contact number.



Signage in Plumstead Gardens

### **CCTV**

There are two CCTV cameras within the park, which are monitored 24 hours a day.

### **Pathways**

There are several tarmac pathways within the garden. Improvements to the pathway from the MUGA to the playground were made in 2022 when this pathway was widened, raised and re tarmacked.



New pathway installed in 2023 from the Brookdene Road entrance



## **RECREATIONAL AND SPORTING FACILITIES**

Opportunities for passive recreation within Plumstead Gardens are excellent and include walking, photography, nature studies, picnics and others. The access points to the park on Church Manorway and Brookdene Road allows the park to get used as a thoroughfare.

### **Multi Use Games Area (MUGA)**

The MUGA in Plumstead Gardens was remarked in 2023 (funded from the Governments Levelling-Up Funding) The MUGA has two courts, both marked with Football and Basketball lines allowing free casual play for park users.



The two ball courts at Plumstead Gardens

### **Table Tennis**

Two table tennis tables were installed in the park in 2023 as part of the improvements funded by the Government's Levelling Up funding. These tables are free for park visitors to use.



Table Tennis tables and hard standing area installed in 2023

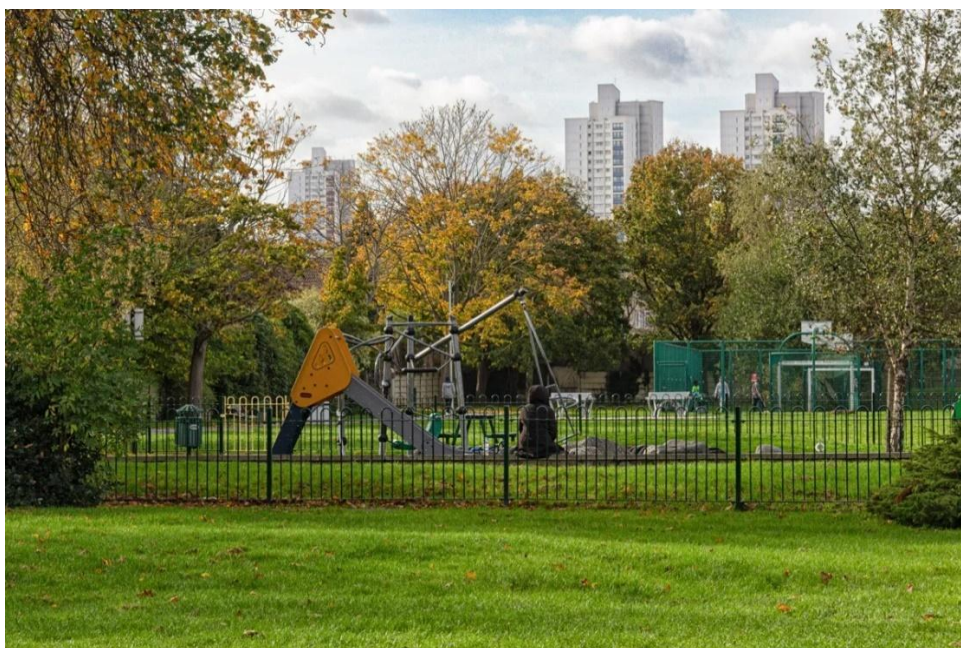


### Children's Play Area

The playground with the park was refurbished in 2022 (as part of the Council's £1 Million Parks Investment Scheme) in consultation with the Friends Group and the local community. In addition to installing new play equipment, the improvements included extending the playground over the site of the old paddling pool area to double the size of the existing playground.



The play equipment conforms to European Union standards EN1176 and EN1177 regarding installation of play equipment and surfacing. All fixed equipment in playgrounds is managed by Parks, Estates and Open Spaces. The equipment is visually inspected daily, with a more detailed inspection undertaken on a bi-monthly basis and an independent inspection on an annual basis.



Plumstead Gardens Playground with the Ball Court in the background



## Outdoor Gym

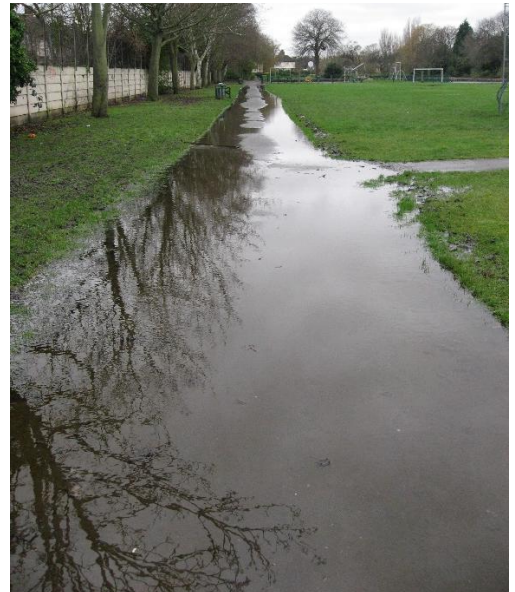
An Outdoor Gym was installed in the park in 2023 as part of the improvement works funded by the Governments “Levelling Up” funding. The outdoor gym was one of the Friends of Plumstead Gardens priorities for the park.



Plumstead Gardens Outdoor Gym installed in 2023

## Informal Sports

There are large grassed areas within Plumstead Gardens can be used for informal sports, however the western side of the park and park entrance from Brookdene Road could not be used for much of the winter season / and times of heavy rain due to issues with flooding, which were possibly caused by the installation of the new railway extension to Abbey Wood on the Elizabeth Line.



Water logging and flooding before the land drainage system was installed at Plumstead Gardens.

In 2022 funding from the £1 Million Parks Improvement programme and from the Planned Maintenance budget from RBG Directorate of Regeneration, Enterprise and Skills a land drainage system to be installed in the large grass area between the playground and Multi Use Games Area to address the flooding problems in this field and at the Brookdene Road entrance to the park. The land drainage system now prevents the grassed area becoming waterlogged and the pathway becoming inaccessible. The area can now be used all year round for informal sports.



Works to improve the drainage in the park in 2022



## **PARK USER INFORMATION**

The Demographic information contained in this section is gathered The Office of National Statistics census 2021 information and relates to Plumstead and Glyndon Ward as a whole and not specifically to the area surrounding Plumstead Gardens.

The resident population of Plumstead & Glyndon Ward as measured in the 2021 census was 22,000 of which 49.2% are male and 50.8% are female.

The ethnicity in the Plumstead & Glyndon Ward is 27.5% Asian / Asian British / Asian Welsh and 25.4% Black / Black British / Black Welsh / Caribbean / African, 4.8% were mixed or multiple ethnic groups, 34.3% white, and 8% class themselves as other ethnic group.

The 2021 census indicated that the age profile of the population in the Plumstead & Glyndon Ward, 26% are 0-19 years, 64.3% are 20-64 years and 7.2% are over 65 years old.

57.9% of the population were economically active and in employment.  
47.2% had no cars or vans in the household.

### **Stakeholders associated with the site.**

#### Royal Borough of Greenwich

- Directorate of Communities, Environment and Central - PE&OS, Sports Development, Communications, Events.
- Directorate of Regeneration, Enterprise and Skills - Property Services, Planning Control.

#### Emergency Services

- Police, Fire & Ambulance Services

#### Community

- The Friends of Plumstead Gardens
- Residents & park users
- Bannockburn Primary School

#### Politicians

- Ward Members (Plumstead and Glyndon Ward)

## **MANAGEMENT OF THE PARK**

### **Management Structure**

The management of the park described in this management plan is the responsibility of the Parks, Estates & Open Spaces service located within the Directorate of Communities, Environment & Central for The Royal Borough of Greenwich. The Parks, Estates and Open Spaces Senior Management Team are accountable for the overall management responsibility of the Service. The Management Structure can be found in [Appendix II](#).

Individual management functions and key functions are identified as follows:

- Horticultural Grounds Maintenance
- Park Rangers Service
- Arboricultural Maintenance
- Parks Strategy and Development Team
- Business Support – Sports lettings, complaints monitoring.

### **Horticultural Grounds Maintenance**

The grounds maintenance for Plumstead Gardens is also carried out by the Royal Borough's own workforce and a mobile grounds maintenance team visits the site on a regular basis to carry out the work such as grass cutting, weeding, leaf clearance, pruning and mulching of shrub beds. The team follow a work programme for the site and the District Manager is responsible for the grounds maintenance staff initially inspects standards. Senior management carry out random checks.

### **Park Ranger Service**

Park Ranger staff visit the park on a regular basis to perform a range of duties to ensure the safety of the public visiting the park. A team of mobile park rangers team visit the park on a daily basis to open and shut the park gates, to empty the litter bins, and maintain the park free of litter. The park rangers will visually inspect the children's playground, the outdoor gym and hard infrastructure within the park. Part of their role is to regularly review and monitor the condition of infrastructure and report items requiring repair or attention. The park rangers will also provide assistance to member of the public where appropriate.

### **Arboricultural Maintenance**

Plumstead Gardens has a comprehensive tree management plan which is approached on a proactive basis and is updated every five years. Tree work within the park is carried out according to priority.

### **Parks Strategy & Development Team**

The Strategy & Development Team work closely with the Friends of Plumstead Gardens to make improvements to the park. Recent projects have included the playground improvements, installation of the land drainage system, installation of the table tennis tables and outdoor gym.

### **Anti-social Behaviour**

Combating anti-social behaviour in Plumstead Gardens has been challenging over the past few years. It is hoped that the improvements made to the park during 2022 / 23 will encourage better and more frequent use of the park leading to less antisocial behaviour. The installation of two CCTV cameras in 2023 (which are remotely controlled 24 hours a day from the central control room in The Woolwich Centre) will further deter anti-social behaviour. Parks, Estates & Open Spaces works closely with the local safer neighbourhood team and Community Support Officers who regularly patrol through Plumstead Gardens (normally once a day).

## Friends of Plumstead Gardens

The Friends of Plumstead Gardens was constituted in 2020 and is supported by the Royal Borough of Greenwich. The Group encourages community involvement and usage of the park and organises events and further promotes the park within the wider community.

This is an excellent resource that the Royal Borough and Friends wish to continue to develop. The Friends Group supported by The Royal Borough of Greenwich have organised the following projects:

- Bulb Planting days
- Refurbishment and planting of the rockery
- Tree Planting
- Design of ground markings in the playground
- Tree Mural on park wall



The Friends Group has approximately 680 members and encourages members of the local community to join them. There are regular updates on the Groups Facebook page to keep member informed about volunteer days planned and any improvements within the park. Members of the community via the Friends regularly volunteer to undertake tasks within the Gardens.





### Other Groups of the Community

The Plumstead area has a large Nepalese Community, who use the park frequently. Plumstead Gardens was used in 2023 by the Nepalese community to celebrate “Teej” which is a Hindu celebration that has religious and cultural importance to Hindu women.



Celebrating “Teej” at Plumstead Gardens

### Other Directorates within the Royal Borough of Greenwich

The Sports Development Team within works in partnership with local sports providers to provide free family sports sessions at Plumstead Gardens throughout the summer. The Events Team provides funding to the Friends Forum to give financial assistance to Friends Groups to arrange a Parkfest.



Free Sports Sessions Flyer 2024



Parkfest 2022



## Marketing and Events

Information about Plumstead Gardens can be found on the Royal Borough of Greenwich's website [www.royalgreenwich.gov.uk](http://www.royalgreenwich.gov.uk) and on the Friends of Plumstead Gardens Facebook page. Activities and events that occur in parks are marketed and advertised in a range of mediums for example, in the Greenwich Time, and on the Council's website and social media, depending on the nature of the activity or event.



Examples of events organised at Plumstead Gardens



Bulb Planting Session

Parks Fest 2022

## Environmental Management

Parks, Estates & Open Spaces horticultural and arboricultural work is managed in conjunction with an Environmental Management System that conforms to the internationally respected EN ISO 14001:2015 Environmental Standard. Parks, Estates & Open Spaces is externally audited and certified against the ISO 14001 to ensure the service is delivered in an environmentally sustainable manner and to reduce any negative effects on the environment that may be caused by grounds maintenance operations. A copy of the Environmental Policy can be found in [Appendix I](#). All staff have completed an Environmental Induction and have access to a copy of the Environmental Management System which is in the Red Folder at the main depots.

The Parks, Estates and Open Spaces department recycles as much of its green waste as possible. Green waste from the Plumstead Gardens is shredded and turned into mulch which is re-used on shrub beds. Mixed waste is taken to the Council's Material Recycling Facility (MRF) where it is separated and then sent for recycling. Other mixed waste which can't be recycled is sent to a local incinerator which produces heat and energy for the adjacent housing estate.

Rechargeable battery-operated hand-held equipment is used within Parks and has started to replace the existing hand-held petrol driven equipment.

## Health and Safety

Staff are able to access Health and Safety information via a 'Red Folder', which is located at staff depots. The contents of the Red Folders include a list of first aiders, list of PA1 PA6A certificate holders, COSHH and Risk Assessments. The Directorate's Health and Safety Policy is available on staff notice boards and on the Council intranet. COSHH assessments are carried out on all new substances before use and risk assessments are carried out for any new activities or machinery introduced to the park and appropriate control measures are implemented to minimise any associated risk.

The vehicles used by the Parks, Estates and Open Spaces department are maintained by The Royal Borough's Fleet Management Service. The Borough is accredited to the Fleet Operator Recognition Scheme (FORS). FORS is a voluntary accreditation scheme for fleet operators which aim to raise the level of quality within fleet operations, and to demonstrate which operators are achieving exemplary levels of best practice in safety, efficiency, and environmental protection. In addition to this, staff perform routine checks on all machinery before use.

## Budget Information

The budgets used to maintain parks and open spaces are currently split into two areas.

Horticultural / Park Ranger Operations and Property Services.

- **Horticultural / Park Rangers Operations**

Funding for most of the spending within Plumstead Gardens comes directly from Parks, Estates and Open Spaces central management fund.

Revenue Spend 2023 / 24 = £13,433.19

Capital Spend 2023 / 24 = £87,220.29

- **Property Services**

The corporate budgets for both planned and responsive maintenance of the Borough's property infrastructure are held by Greenwich Property Services in the Directorate of Regeneration Enterprise and Skills. Planned works are carried out on a strict basis of corporate priorities. Responsive repairs are carried out for minor items as and when they arise.



### External Funding

Applications for external funding are made for various improvements to the park. In recent years funding has been obtained from the Government's "Levelling up fund" and the Council's "£1 Million Parks Investment Scheme" to carry out improvements within the park. Greenwich Neighbourhood Growth Fund was also applied for in 2023.



The derelict paddling pool before its removal



Removal of the derelict paddling pool in 2022



Playground extended into the footprint of the old paddling pool in 2022

## **PART II: WHERE DO WE WANT TO GET TO?**

### **VISION**

The vision for Plumstead Gardens is to develop an attractive and safe park and which will contribute to the health and well-being that residents of Plumstead. To maintain good facilities at the park and to develop the park further through consultation with local community.

- To promote a safe environment in the park and reduce Anti-Social Behaviour
- To improve the health and wellbeing of visitors and residents by offering a well maintained and quality park for active recreation and/or relaxation.
- To protect biological assets and increase biodiversity.
- To work with the local community in identifying local priorities for funding of the park
- To ensure that the activities and events in the park celebrate and promote the borough's rich diversity and is accessible to everyone.
- To continue to achieve a Green Flag standard for the park.

### **STRENGTHS**

- Good children's play facilities within the park
- Sports facilities include two ball courts, table tennis and an outdoor gym.
- Community orchard
- CCTV in place
- Water supply within the park
- Large expanse of grass for informal sports and events
- Active Friends Group
- Areas of conservation grass around the edges of the park.

### **CHALLENGES**

- No resources to provide static staff on site.
- The park does not have a specific capital funding stream allocated solely to it.
- Antisocial behaviour occurs and still requires continued monitoring.
- The Royal Borough of Greenwich as with many other local Council's faces huge budget cuts

### **RECOMMENDATIONS**

- To improve awareness/use of site by all sections of the community
- Improve active recreation facilities in park.
- To improve biodiversity on site.
- To continue to consult with and support the Friends of Plumstead Gardens

## PART III: HOW WILL WE GET THERE

### ACTION PLAN 2025-30

Timescales as given in this document are as follows:

Short Term – Within one to two years

Medium Term – Within three years

Long Term – Five years and more

**(Note:** Actions requiring investment are subject to adequate funding being secured)

Recommendation:	Action:	Timescale: (Long/Medium /Short Term)	Action By	Status of Work:
Improve sightlines within the park	Cut back shrubberies and trees to improve visibility and safety.	Short Term	PEOS	Open
Review future landscaping options for the old pond area within the park	Consult with the Friends of Plumstead Gardens about future use options for this area	Medium Term	PE&OS / Friends Group	Open
Review the size of shrubberies within the park	Consider whether the shrub beds should be made smaller and consult with the Friends Group	Medium Term	PE&OS / Friends Group	Open
Reduce ASB within the park	Use CCTV within the park and work with external agencies to monitor anti-social behaviour and carry out preventative / remedial action	On-going	PE&OS	Open
To support the Friends Group in securing external funding as appropriate	Work with Friends Group to identify priorities for investment and secure external funding when and where possible	On-going	PE&OS / Friends Group	Open
To install interpretation signs at both entrances to the park	Work with the Friends Group and Comms team to design boards. Funding from previous GNGF	Short Term	PE&OS / Friends Group	Open

**Important Note:** Improvement actions requiring investment are subject to funding being secured. There are no additional funds available from the Council unless it has been identified against a specific action.



## **PART IV: HOW WILL WE KNOW WHEN WE'VE ARRIVED?**

### **MONITORING AND REVIEW**

The Plumstead Gardens Management Plan will be fully reviewed and updated every five years by Parks Management Staff responsible for the park, with annual reviews undertaken as and when necessary.

A working document copy of the Management Plan is kept within the park's office so that issues and changes that arise as well as new information can be documented. The action plan will be regularly reviewed and completed works documented within it as part of the Directorate's Service business planning process.

Upon review, the new management plan will make note of the works performed and review the success of those works.



The north-east corner of Plumstead Gardens

## APPENDIX I: Legislation, Policies and Strategies

### The Greenwich Strategy

The Greenwich Strategy sets out the vision for Greenwich Borough as being the place to live, work, learn and visit. This vision underpins all of the strategies produced by the Royal Borough of Greenwich and directly impacts on all service plans and service delivery.

### The Cultural Strategy

The Strategy has five over-arching themes: - Equality and Access, Sustainability, the Cultural Economy, Achievement and Excellence and Partnerships. All of these aims are relevant to this management plan.

### Green Space Strategy

The Green Spaces Strategy sets out The Royal Borough's strategic intentions for its green assets and its vision of the positive contribution that Greenwich's open spaces networks make to our lives.

The thematic objectives (community safety, biodiversity, education and culture, culture & events, tackling inequality, sport, health & well-being) and their relevant actions as shown below, are all relevant to the management plan for Plumstead Gardens.

### Parks & Open Spaces Strategy

The 10 year Strategy, adopted in 2017 is centred on the following seven themes.

**Park and open spaces management:** Ensuring our parks and open spaces are well managed, maintained in good condition and are safe to use.

**Community engagement:** Ensuring we actively engage and work in partnership with local residents to provide good quality parks that meet the needs of the local community.

**Nature and biodiversity:** Ensuring that areas and habitats are provided for wildlife and that they are protected from inappropriate development.

**Environmental management:** Maximise resource efficiency by increasing recycling opportunities, establish better use of essential energy sources and controlling the use of pesticides and chemicals.

**Recreation, health and wellbeing:** Ensuring that parks provide spaces for active recreation and quiet reflection and contribute to the health and well-being of the local community.

**Regeneration and local economy:** Ensuring our parks are well designed, attractive to visitors and encourage enterprise and employment of local people; and

**Culture and heritage:** Ensuring our parks are places for culture and that their heritage is preserved and celebrated.

### Service Plan

The Parks, Estates & Open Spaces department aims to develop, manage, ensure accessibility and maintain to a high standard the borough's Parks, Estates and Open Spaces, Woodlands, Tree Stock, Cemeteries, Playgrounds, Sports Pitches, Allotments and other outdoor facilities. To meet the needs of the community and deliver the Council's core objectives where applicable to the service, and specifically regarding the provision of a clean and well cared for environment and supporting Health and Quality of Life for the local community.

## **Royal Greenwich Local Plan: Core Strategy with Detailed Policies**

Local Councils have a duty to prepare a Development Plan by law. The Core Strategy sets out the vision for use of the land in the Borough and provides the main guidance for making decisions on individual planning proposals. It provides a framework of acceptable uses within the Borough, defining areas where development is not desired or where it needs to be carefully directed. The document is intended to cover the period 2013 – 2028.

The Core Strategy identifies and designates the park within this management plan as following:

- Open Space
- Community Open Space
- Heritage Assets
- Conservation Areas
- Biodiversity

### Policy OSI Open Space

Safeguard, enhance and improve access to existing public and private open space, including Metropolitan Open Land, Green Belt, Green Chain and Community Open Space, as defined on the policies map, and other small open spaces such as Local Green Spaces.

### Policy OS(b) Community Open Space

New buildings and extensions to existing buildings in Community Open Space will only be permitted where they are ancillary to the existing land use, are limited in size and extent, are sensitively sited and are compatible with neighbouring development. Where existing built development within parks and public open spaces becomes surplus to demand, the Royal Borough may allow these buildings to be redeveloped for specialist sporting development. Special consideration will be given to development proposals on land fringing, abutting or otherwise having a visual relationship with MOL where development could be detrimental to its visual amenity, character or use.

### Policy DH3 Heritage Assets

The Royal Borough will protect and enhance the heritage assets and settings of Royal Greenwich, including the Maritime Greenwich World Heritage Site, preserving or enhancing the character or appearance of the 20 Conservation Areas, applying a presumption in favour of the preservation of statutory listed buildings and their settings, giving substantial weight to protecting and conserving locally listed buildings, protecting the three registered parks and gardens, as well as Royal Greenwich's archaeological remains and areas of special character.

### Policy DH(h) Conservation Areas

- i) Character and Setting Planning permission will only be granted for proposals which pay special attention to preserving or enhancing the character or appearance of the Conservation Area. The local scale, the established pattern of development and landscape, building form and materials will all be taken into account. Development on sites in the vicinity of a Conservation Area and which would have a visual effect on its character or appearance, should respect the setting of that area.
- ii) Article 4 Directions Where the character or appearance of a Conservation Area is threatened by inappropriate development, the Royal Borough will seek to control these through the use of Article 4 Directions.
- iii) Protection of Buildings Demolition of buildings and structures that positively contribute to the character or appearance of a Conservation Area will be resisted. Conservation Area consent for the demolition of buildings will be given only when planning permission has been granted for



redevelopment that complies with the character and setting requirements of this policy. When demolition is permitted, it will be subject to the building remaining until a contract for redevelopment is awarded and the timescale for implementation is agreed.

#### **Policy OS4 Biodiversity**

Royal Greenwich's rich biodiversity and geodiversity will be protected, restored and enhanced, including the priority habitats and species identified in the Greenwich Biodiversity Action Plan. There will be a presumption against the development of: Sites of Special Scientific Interest (SSSI) (as shown on the Proposals Map) Sites of Importance for Nature Conservation (SINC) (as defined on the Proposals Map and set out in tables 12-15); Local Nature Reserves (LNR) (as shown on the Proposals Map and set out in tables 12-15); Royal Greenwich's Regionally Important Geological and Geomorphological Site(RIGS): Dog Rocks in Plumstead Common; and Royal Greenwich's Locally Important Geological and Geomorphological Sites (LIGS): Bleak Hill Sandpits and Wickham Valley Brickworks complex Biodiversity enhancements will be encouraged particularly in areas that are currently deficient in accessible wildlife sites.

The Core Strategy may be viewed at The Woolwich Centre or online on The Royal Borough of Greenwich's website [www.royalgreenwich.gov.uk](http://www.royalgreenwich.gov.uk).

#### **The Biodiversity Action Plan**

The Greenwich Biodiversity Action Plan is the first co-ordinated approach to conserving Greenwich's biodiversity. The aim of the plan is: *'To ensure the conservation, enhancement and public appreciation of the biodiversity of the London Borough of Greenwich'*. The Greenwich Biodiversity Action Plan contains action plans for four priority species (Bats, Black Poplar, Stag Beetle and Water Vole. And six priority habitats: Acid grassland and heathland, Gardens, Parks and green spaces, Wasteland, Waters edge and wetland, and Woodland. Habitat Action Plans have been developed for the priority species.

#### **Dog Control Orders**

Dog fouling has been recognised as being a problem within many of The Royal Borough's parks and open spaces. The Public Space Protection Orders, Anti-social Behaviour, Crime and Policing Act 2014 makes it possible for local authorities to introduce Dog Control Orders. These orders would make it an offence for persons in control of their dog(s) to:

- Not clean up after their dog has fouled.
- Have more than 4 dogs in their control at one time.
- Not to have their dog on a lead in designated areas
- Not to have their dog on a lead and kept on a lead when instructed to do so by an authorised officer.
- To allow their dog(s) to access designated dog exclusion areas.

#### **ISO 9001:2015- Quality Management System**

The Parks, Estates & Open Spaces arboricultural services is accredited to the ISO 9001:2015. The ISO 9001 Quality Management System is used by the Royal Borough to manage their activities and resources to guarantee a quality service. The ISO 9001 helps the Royal Borough achieve customer satisfaction because it provides a framework for service analysis and definition and for the improvement of processes. The four main parts covered under the Quality Management System are (i) management

responsibility (ii) resource management (iii) process management and (iv) measurement, analysis and improvement.

### **ISO 14001: 2015 – Environmental Management System**

The Parks, Estates & Open Spaces horticultural and arboricultural services are managed in conjunction with an Environmental Management System that is accredited to the internationally respected EN ISO 14001:2015 Environmental Standard. The Royal Borough's grounds maintenance and tree maintenance activities are controlled to ensure the service is delivered in an environmentally sustainable manner and to reduce any negative effects on the environment that may be their operations. Parks, Estates & Open Spaces works towards sustainable development and continual environmental improvements.

### **ISO 45001:2018 – Health, Safety & Wellbeing Management System**

The Parks, Estates & Open Spaces arboricultural services is accredited to the ISO 45001:2018 which provides a framework for managing Occupation Health & Safety risks and opportunities. The aim is to prevent work related injury and ill health to workers and to provide safe, healthier workplaces by eliminating hazards minimizing risks by taking effective preventative and protective measures. The intended outcomes of the Health, Safety and Wellbeing Management System include (i) continual improvement of performance, (ii) fulfilment of legal and other requirements and (iii) achievement of Health & safety objectives.





## 4.2 Environmental Policy

The Royal Borough of Greenwich recognises that environmental issues are of fundamental importance to our customers, and to our business success.

The Royal Borough of Greenwich aims to work towards the achievement of sustainable development and continual improvement.

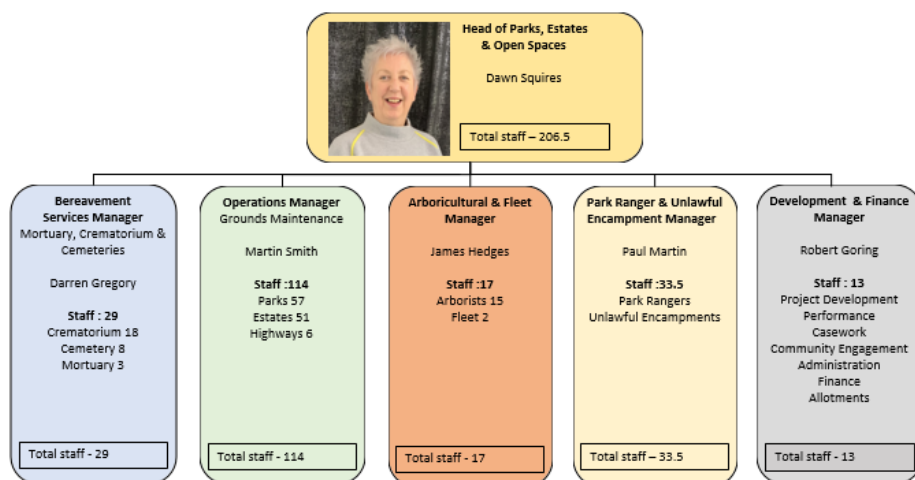
Under the scope of its Environmental Management Systems, The Royal Borough of Greenwich strives to:

- Promote sustainability and the use of sustainable resources
- Promote conservation and environmental awareness
- Promote activities which enhance the environment
- Achieve continual improvements in environmental performance
- Prevent the release of pollution
- Minimise the release of waste, noise and emissions
- Minimise activities which have a negative effect on the environment
- Maximise activities which have a positive effect on the environment
- Comply with applicable legal and other requirements that relate to environmental aspects
- Work in partnership with other organisations in environmental management
- Set environmental targets built into the day to day running of the service
- Use products which have a minimum impact on the environment
- Provide training in environmental issues to all persons
- Communicate the Environmental Policy to all persons working for or on behalf of The Royal Borough of Greenwich
- Review Environmental objectives, targets and policy

Signed		Head of Parks & Open Spaces
--------	---	-----------------------------

## APPENDIX II: Structure Chart 2024/25

Parks, Estates & Open Spaces - Management Structure Chart 2024-25



Notes

24-25

Directorate Communities, Environment & Central



## APPENDIX III: Previous Action Plan 2020-25 showing completed actions

### ACTION PLAN 2020-25

Timescales as given in this document are as follows:

Short Term – Within one to two years

Medium Term – Within three years

Long Term – Five years and more

(Note: Actions requiring investment are subject to adequate funding being secured)

Recommendation:	Action:	Timescale: (Long/Medium /Short Term)	Action By	Status of Work:
Establish a new Friends of Group for Plumstead Gardens	Consultation with the local community and other stakeholders with the objective of forming a Friends Group for the park	Short Term	PE&OS	Completed 2020
Covid Memorial to be installed in the park as part of Borough's Covid Memorial for each Ward (2022)	Plant tree and bulbs with bench and memorial plaque.	Short Term	PEOS	Completed 2022
Improve the children's play facilities within the park	Obtain funding from the £1 Million Parks Investment Scheme and Parks Budget to extend and refurbish the playground area.	Short Term	PE&OS	Completed 2022
Address the flooding issues and remove derelict infrastructure within the park.	Obtain funding from the £1 Million Parks Improvement Scheme to install a land drainage system, raise and widen pathway from MUGA and remove the old paddling pool.	Short Term	DRES / PE&OS	Completed 2022
Install CCTV within the park	Install a CCTV camera at each gate to help combat ASB	Medium Term	DRES/ PE&OS	Completed 2023
Improve the range of recreational facilities for park users.	Obtain funding from Government's "Levelling-Up Parks" fund to install an outdoor gym and two tennis tables, re-mark two courts in the MUGA, install additional picnic benches.	Medium Term	P&OS	Completed 2023

<b>Recommendation:</b>	<b>Action:</b>	<b>Timescale: (Long/Medium /Short Term)</b>	<b>Action By</b>	<b>Status of Work:</b>
Make the park more welcoming and improve elements of built infrastructure.	Obtain funding from Government's "Levelling-Up Parks" fund to improve the entrances and disabled access around the park.	Medium Term	DRES / PEOS	Completed 2023
Plant a community orchard in the park	Obtain funding from Government's "Levelling-Up Parks" fund to carry out tree planting and install a water supply within the park so that the new trees can be watered.	Medium Term	DRES / PE&OS	Completed 2023
Improve biodiversity within the park	Install bird boxes and plant the rockery area with wildflowers	Medium Term	PE&OS / Friends Group	Completed 2023
To achieve a recognised high standard for the park.	Complete a Green Flag Award application for Plumstead Gardens by the end of January 2024	Medium Term	PE&OS	Completed 2024
Install Notice Boards within the park	Support the Friends Group to apply for Greenwich Neighbourhood Growth Funding for new notice boards	Medium Term	PE&OS / Friends Group	Completed 2024

**Important Note:** Improvement actions requiring investment are subject to funding being secured. There are no additional funds available from the Council unless it has been identified against a specific action.