

Horn Park

Management Plan 2021-2025

(updated December 2024)



CONTENTS

PART 1: WHERE ARE WE NOW?	
Park Address and Contact Details	3
Introduction - What is a Park Management Plan?	3
Description of the Park	5
Heritage and History of the Park	7
Biological	7
Buildings	8
Access to the Park	8
Recreational Facilities	10
Park User Information	12
Management of the Park	15
PART 2: WHERE DO WE WANT TO GET TO?	
Vision	20
Analysis & Assessment	20
Strengths	22
Challenges	22
Recommendations	22
PART 3: HOW WILL WE GET THERE?	
Action Plan	23
PART 4: HOW WILL WE KNOW WHEN WE HAVE ARRIVED?	
Monitoring and Review	26
APPENDICES	
Appendix I: References	26
Appendix II: Legislation, Policies & Strategies	27
Appendix III: 2005 Meadow Survey	34

PART I: WHERE WE ARE NOW

Park Address and Contact Details

Name of Site: Horn Park

Address: Gavestone Crescent
Lee
London
SE12 9BT

If you require any further details about this plan please contact:

Address: Parks, Estates & Open Spaces
Oxleas Woods Centre
Crown Woods Lane
London
SE18 3JA

Tel. 020 8856 0100

Email parks@royalgreenwich.gov.uk

This Parks Strategy & Development team can be contacted for any further information (using the contact details provided above).

There is an active Friends of Group for Horn Park.
For information about the friends group, contact the Parks Estates & Open Spaces department.

Introduction - What is a park management plan?

Management Plans are an important aid to the efficient and effective management of a site. A Plan forms part of a process for evaluating performance against agreed standards, consulting and involving people, strategic planning and providing continuity. Individual plans will be specific to each park and will deliver aims and objectives specific to the needs of the local community who will be directly involved in its formulation.

A Park Management Plan also provides an excellent opportunity to collate a wealth of information relating to the park that the management authority possesses, into a single comprehensive document.

Purpose of this management plan

As well as developing a Green Space Strategy, the production of individual management plans for each park is good practice and is in accordance with The Royal Borough's commitment to providing Best Value.

This Management Plan will provide a vital resource for parks staff in maintaining and developing Horn Park as a resource for the community and visitors to the area. The Horn Park Management Plan will be fully reviewed and updated in 2026 by Parks Estates & Open Spaces management staff.

It is hoped that this plan will help to encourage relationships between The Royal Borough and the community and provide access to information on the management approach to this site, as well as providing a framework around which any future decisions concerning the park are taken.

In addition, it is hoped that the management plan for Horn Park will assist with allocating existing resources and securing additional resources for developments on this site that this management plan specifies.

Future actions / priorities for this site are identified in the Action Plan to this document. This management plan therefore provides a benchmark against which future progress can be measured.

Wider Policy Context

The Management Plan has been written within the context of a wide framework of national, regional and local policy statements and strategies.

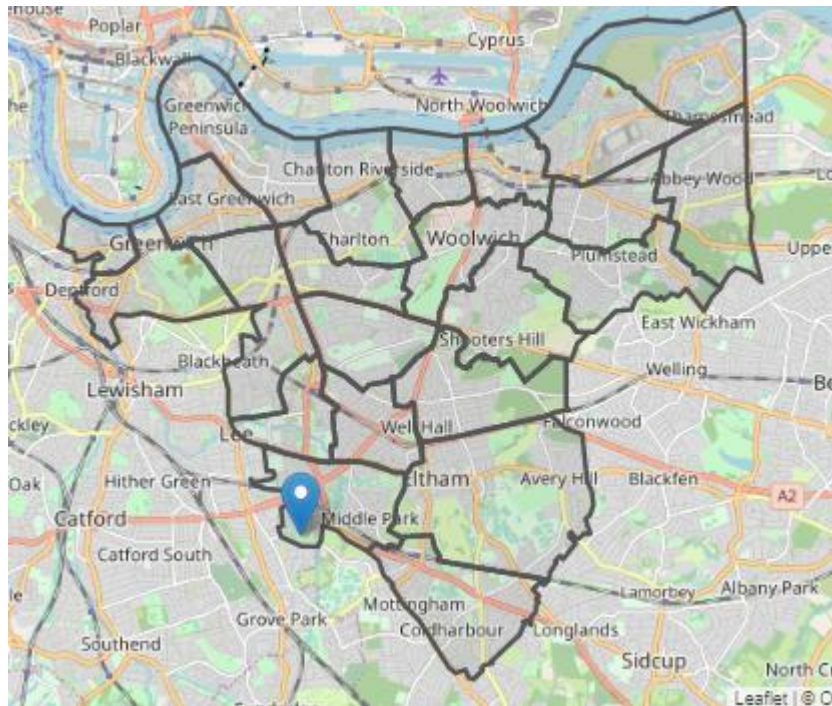
A number of strategies have been considered in the production of this document to ensure that the priorities identified in this plan deliver and compliment the appropriate aims and objectives identified in them.

The main documents impacting on the development of this plan are listed in [Appendix II](#).

Part II: Site Description and Information Base

Description of the park

Horn Park is a small park in the Middle Park and Horn Park Ward, found in the southwest area of The Royal Borough of Greenwich. (Please see map below). It is owned by Royal Borough of Greenwich and there are no leases affecting any part of the park.

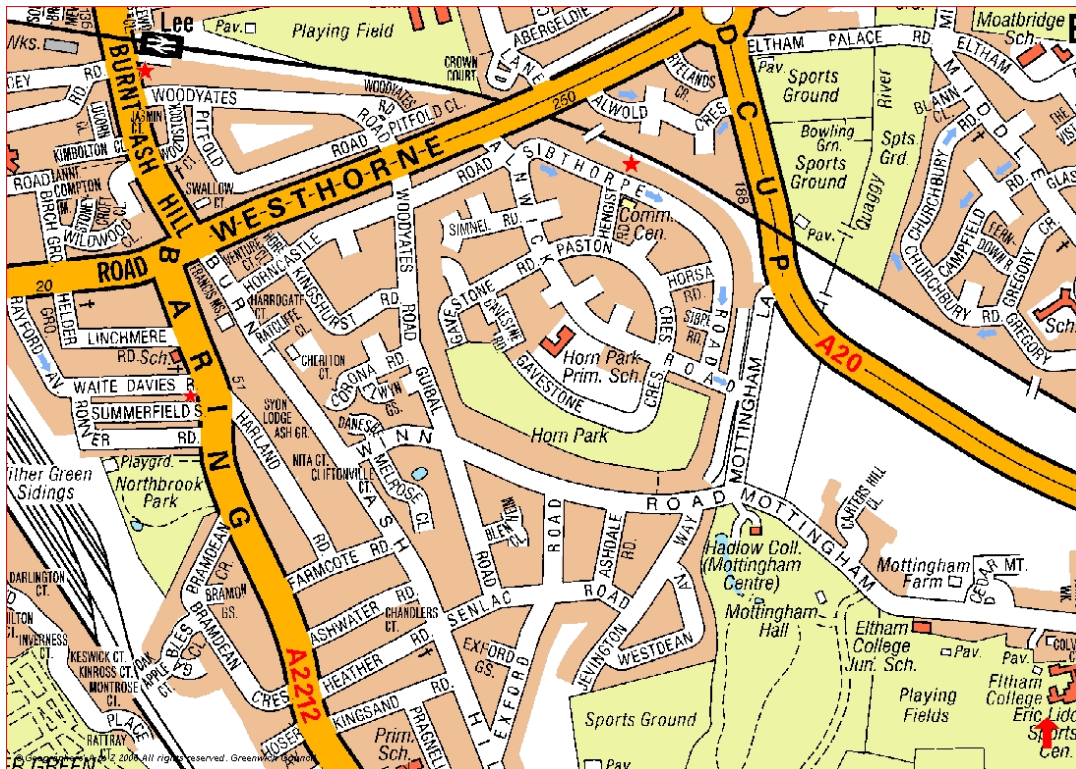


Location of the park within the Greenwich Borough

It occupies a total area of 6.7 hectares and is bordered by residences and allotments. The park contains several recreational facilities including a grass area for informal ball games, a children's playground, a skate park, an outdoor gym and a multi-use ball court (all based in the northwest section of the park). This area is covered by CCTV.

Horn Park School is situated on the northern side of the park adjacent to the multi-use ball court in the park. The eastern part of the park is an area of gentle slope in comparison to the flat area of the western part of the park.

The park is approximately 60 metres above sea level and is enclosed by a 3-meter-high chain link fence on its northern side and by close board fences where it borders onto residential land.



Local Area around Horn Park

The geology underlying the park is defined by The Royal Borough GIS as being London Clay over the entire park area. Horn Park has a primary classification as *Local Park* in The Royal Borough's Green Space Strategy. Horn Park is located at grid reference TQ 409 736



Ariel View of Horn Park

Heritage and history

Horn Park was once part of Eltham Palace estate. Eltham Palace had three wooded deer parks, these being; the Great Park, Middle Park and Horn Park. The present Horn Park is the last remnant of 335 acres that once made up Horn Park (was also known as Lee Park) After the ravages of the Civil War, the palace was used as a farm and the Great Hall became a barn. The palace's three parks were stripped of their timber for shipbuilding in around 1660 by Sir Thomas Walsingham. Anecdotal evidence suggests that the area occupied by the park was an orchard prior to development.

Horn Park Estate was built between 1936 and 1950.

Biological

Parks, Estates & Open Spaces aims to promote Horn Park for recreational use whilst protecting and enhancing the natural habitats it offers. A large open space in the centre of the park is managed as conservation grassland in order to encourage different species of plants and invertebrates to develop in accordance with The Royal Borough of Greenwich's Biodiversity Action Plan (protected species such as hedgehogs and stag beetles in addition to shrews, foxes, squirrels have been seen within the park). There is a stand of large poplars in this area. Management of the regeneration grassland within the park is undertaken in accordance with the grassland management plan.

During 2001, 1750 young seedling trees were planted next to the perimeter fence in the western area of the park. A number of the saplings flourished, including wild cherry, ash, willow, poplar, hornbeam among others and are now well established. Planting of native whips and naturalized bulbs increases this woodland area and the size of valuable habits on an ongoing basis



There is a diverse range of tree species within the park, particularly in the formal plantings in the eastern section. An arboricultural survey of this park was carried out in 2018 (a copy is available on request).

Where safe and practical, any wood from tree pruning is left on-site to create habitat for wildlife.

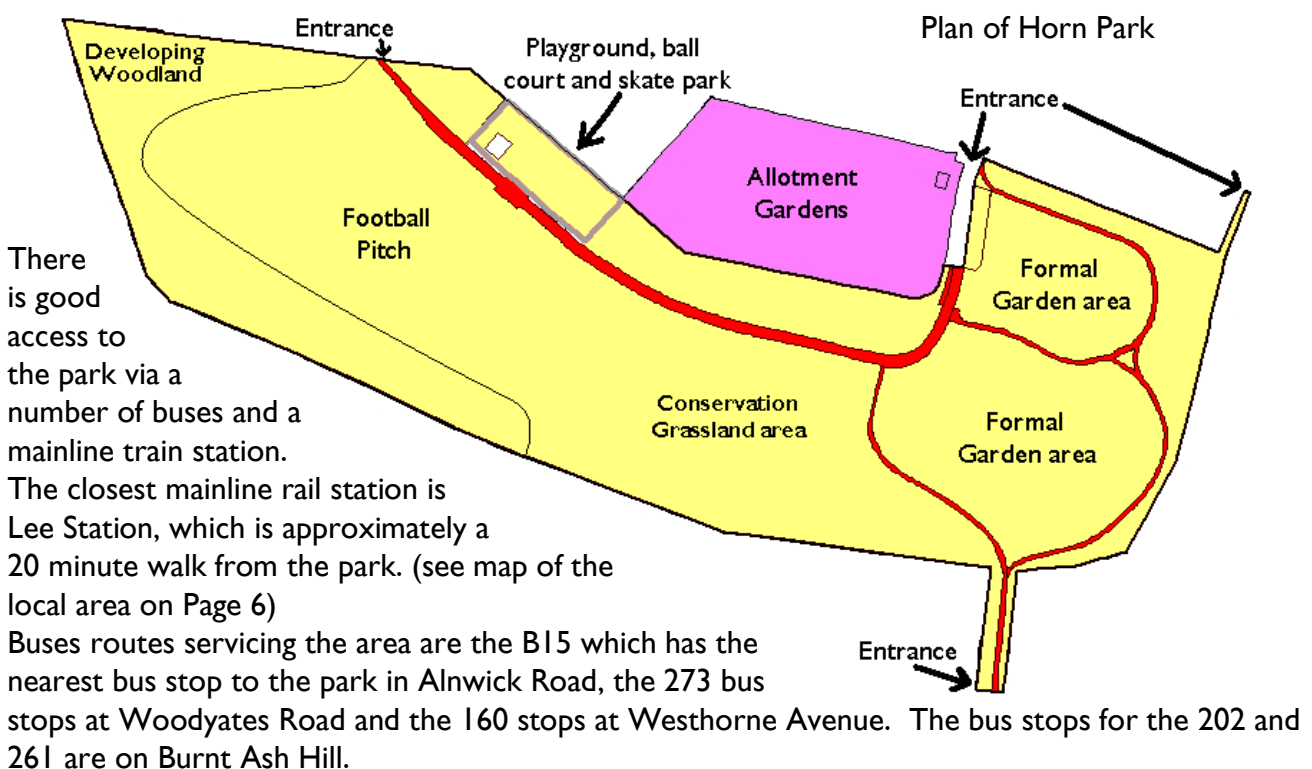
Buildings

There are currently no buildings within Horn Park.

Access

Horn Park has four public entrances. The park is now accessible 24/7 via anti-motorcycle kissing style gates. The gates in Alnwick and Gavestone Road have also been fitted with radar locks allowing disabled access 24/7. Specific details of the entrances can be found at www.accessable.co.uk/venues/horn-park. In addition to these public entrances, there is an entrance from the school located adjacent to the playground.

The main pathway / road within the park is wheelchair accessible. The formal areas in the eastern section have well paved pathways but some sections are over 1 in 14 gradient and do not conform to accessibility standards. The plan shown shows the layout of the pathways in red.



Parking facilities are available on local side streets only.

There are a number of signs within the park. At three entrances there is a sign with a map and description of the park. There is also a sign at the skate park area containing emergency contact numbers. A notice board has been installed by the outdoor gym giving information regarding the Horn Park Friends.

Horn Park, as mentioned, is mainly surrounded by chain link fencing and hedge where it adjoins residential properties and chain link or wire fence along much of the northern boundary.



Horn Park Sign next to entrance

Recreational Facilities

Horn Park has a children's playground, a skate park, a multi-use ball court, an outdoor gym and a grass area on site for informal sport and play on site. Visitors can also enjoy other recreational activities such as the very popular dog walking. There are a variety of park benches and seats installed in the park, with litter and dog bins adjacent to most of them.

Some items of park furniture were replaced in 2018. This was funded by the councillors ward budget scheme. If no funding streams are available to replace the furniture and equipment when necessary, then items are prioritised and replaced when the parks budget allows.

Informal Sport and Games Area

A drainage system was installed to enable all year round play on the previously waterlogged football pitch. The Marathon Trust funded the £50K needed for this work.



The Informal Sports Area

Skate Park

The skate park was installed at Horn Park in 2003 and was funded through South Greenwich Regeneration Agency Funding. The skate park has a variety of equipment that is well used by local teenagers. The equipment at the skate park is visually inspected a minimum of three times a week, a more detailed inspection bi-monthly and an independent inspection is carried out annually.

Children's Playground

The playground was installed in 2006 and caters for children between the ages of 4 and 11. It replaced the original playground which where ball court is now situated. The play equipment conforms to the European Safety Standards EN1176 and EN1177. The equipment is visually

inspected a minimum of three times a week, a more detailed inspection bi-monthly and an independent inspection is carried out annually.

After consultation with local residents and the Friends of Group, additional play equipment for older children was installed in the park next to the playground in 2011.

In 2022 there was further investment to improve the playground with new equipment.

Horn Park Children's Playground after 2022 investment



Outdoor Gym

The outdoor gym at Horn Park was installed in 2009 and was funded through “Community Spaces The Big Lottery”. It provides free outdoor activity all year round. The equipment is resistance based, robust, weatherproof and conforms to European Safety Standards EN1176 and EN957. is visually inspected a minimum of three times a week, a more detailed inspection bi-monthly and an independent inspection is carried out annually.



Horn Park Outdoor Gym

Multi-Use Games Area

The multi-use games area was installed in 2006 and is used mainly for either football or basketball. The ball court is floodlit and is situated between the playground and the skate park.



Multi Use Games Area

Park User Information

The demographic information gathered in this section is gathered from a variety of sources, including the 2011 Census Information from the London.gov.uk web site under Ward Profiles. The information relates to Middle Park and Sutcliffe Ward as whole and not specifically to Horn Park's immediate environs. Please note that the ward boundaries and names changed in 2022 but the updated census information from 2021 is not available.

Middle Park & Horn Park Census Information

Middle Park and Horn Park is an electoral ward within the Royal Borough of Greenwich, London. According to the 2021 Census, the ward has a population of 9,517 residents.

Population Breakdown:

- **Gender:**
 - Males: 4,456
 - Females: 5,061
- **Age Groups:**
 - 0-17 years: 2,565
 - 18-64 years: 5,681
 - 65+ years: 1,271
- **Ethnic Composition:**
 - White: 5,988
 - Asian: 838
 - Black: 1,743
 - Mixed/Multiple Ethnic Groups: 553
 - Other Ethnic Groups: 352
- **Country of Birth:**
 - UK: 6,820
 - European Union: 914
 - Other Europe: 202
 - Middle East & Asia: 581
 - Africa: 619
 - Other Countries: 381
- **Religious Affiliation:**
 - Christian: 4,577
 - Muslim: 642
 - Hindu: 257
 - No Religion: 3,297
 - Other Religions: 226

These statistics provide a snapshot of the demographic composition of Middle Park and Horn Park, reflecting its diversity in terms of age, ethnicity, birthplace, and religious affiliation.

Horn Park is an excellent local park and marketed on the Royal Borough of Greenwich website. The park is signposted locally in Alnwick Road.

Horn Park Friends

The “Horn Park Friends” group were set up in 2002 and now have 101 members. The friends group hold regular picnic days and other small scale events in the park involving community groups, councillors and the local police. Annual events in the park included a bulb planting day in which over 2000 bulbs are planted. There are also a number of volunteer work days which total over 600 hours each year and the park has been part of the ‘parks fest’ programme.



Horn Park Friends Fund Raising at an event



A Horn Park Summer Fun Day

Stakeholders

Royal Borough of Greenwich

- Directorate Communities, Environment & Central (PE&OS, Communications, Community Engagement, Events)
- Directorate of Regeneration Enterprise & Skills (Property Services, Planning Control)
- Housing Services (Neighbourhood Panels / Representatives)
- Children's Services

Agencies

- Police, Fire & Rescue Service

Community

- Horn Park Friends
- Horn Park Forum

Politicians

- Local MP
- Ward Members

Schools

- Horn Park Primary school.

Management of the site

Management Structure

The management of the park described in this management plan is the responsibility of the Parks, Estates & Open Spaces service within The Royal Borough of Greenwich.

The Parks, Estates and Open Spaces Department is located within the Directorate of Communities, Environment & Central. The Parks, Estates and Open Spaces Senior Management Team are accountable for the overall management responsibility of the Service.

Individual management functions are devolved and key functions are identified as follows:

- Horticultural Maintenance
- Park Rangers
- Parks Development
- Fixed Equipment Playgrounds
- Ecology & Conservation
- Tree & Woodland Maintenance
- Administration – sports lettings, complaints monitoring

The Parks, Estates and Open Spaces gardening staff carry out regular horticultural maintenance using the works programme below.

Ad-hoc works are raised from the variation order budget including the recommendations from the meadow survey (appendix III) apart from the continued regular cutting of area B.

Annual Schedule of Grounds Maintenance

D04M HORN PARK													
line	Description	JAN	FEB	MAR	APR	MAY	JUN	JUL	AUG	SEP	OCT	NOV	DEC
1	spray all hard standing areas & weed kill channels				1								
2	edging half moon		1										
3	pedestrian grass mowing			2	2	3	3	3	2	2	2	1	
4	brushcutting & obstacles			1	1	1	1	1	1	1	1	1	
5	hedge base maint					1				1			
6	leaf clearance	1										1	1
7	shrub bed maint			1		1		1		1			
8	shrub bed maint	1										1	
9	sweeping paths	5	2	2	2	3	2	2	3	2	4	5	4
10	tree feathering			1				1					
DISTRICT 1 TRACTOR GANG MOWING													
line	Site	JAN	FEB	MAR	APR	MAY	JUN	JUL	AUG	SEP	OCT	NOV	DEC
T17	D04M HORN PARK			2	2	3	3	3	2	2	2	1	
DISTRICT 1 MINI-TRIPLE MOWING SITES													
line	Site	JAN	FEB	MAR	APR	MAY	JUN	JUL	AUG	SEP	OCT	NOV	DEC
M24	D04M HORN PARK			2	2	3	3	3	2	2	2	1	

Park Rangers visit the park on a daily basis to perform a range of duties on site: - to ensure the safety of the public visiting the park, provide assistance where appropriate, visual inspection of facilities. Waste management of the site is also carried out by the park rangers. The site is litter picked on a daily basis and the park litter and dog bins are emptied regularly. The park rangers also carry out visual inspections of the playground, outdoor gym and other recreational facilities. They work annualised hours which allows a greater presence during the busier summer period.

Environmental Management of the Park

The Royal Borough Parks, Estates & Open Spaces department is accredited with the BS EN ISO 14001 Environmental Management System. The Parks and Open Spaces team is committed to ensuring that its activities are undertaken in an environmentally-friendly manner and that effects on the environment are controlled.

Parks, Estates & Open Spaces recycles all of its 'green waste'. Green waste is transported locally from parks, gardens and woodlands to Holbrook Yard at Shooters Hill, where it is recycled into mulch. The mulch is then used in the parks, both as a provider of nutrients, a moisture retainer and a suppressor of weeds.

Non green waste is taken to the central waste transfer station where 35% of the Boroughs waste is separated and recycled.

Parks, Estates & Open Spaces use herbicide only as necessary for the control of invasive species such as Giant Hogweed and Japanese Knotweed and where weed control is required on hard surfaces).

Peat Policy

One of the aims of the policy is to reduce or cut out the use of peat as it is not sustainable. The policy regarding the use of peat can be found in Appendix II

Pesticide usage policy

In line with the section's environmental policy, Parks and Open Spaces aim to minimise pesticide usage. The policy regarding the use of pesticides can be found in Appendix II

All staff have completed an Environmental Induction and have access to a copy of the Environmental Management System which is in the Red Folder at each depot.

Health and Safety

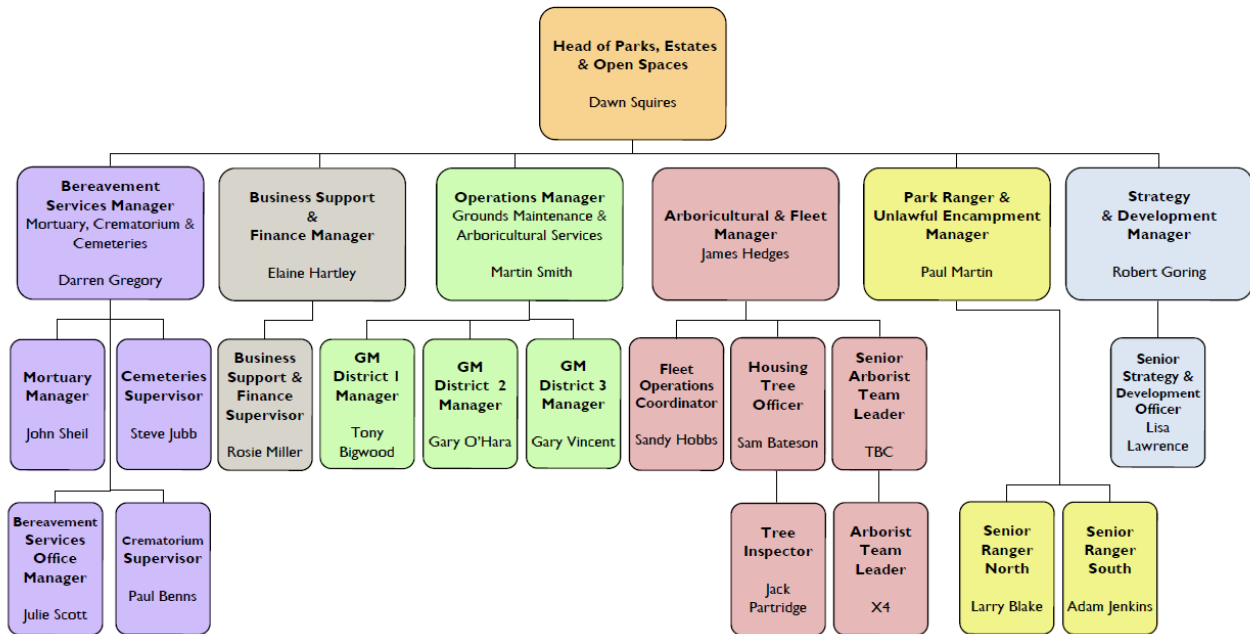
Staff are able to access Health and Safety information via a 'Red Folder', which is located at every depot where staff are based. The contents of the Red Folders include a list of first aiders, list of PA1 PA6A certificate holders, COSHH assessments, Risk Assessments and the Environmental Management System Manual. The Directorate's Health and Safety Policy is available on staff notice boards and on the Council intranet. The contents of the red folder are reviewed on a regular basis. COSHH assessments are carried out on all new substances before use and risk assessments are carried out for any new activities or machinery introduced to the park and appropriate control measures are implemented to minimise any associated risk. A COSHH statement can be found in Appendix II

Grounds maintenance equipment is regularly serviced and maintained by The Royal Borough's Fleet Management Service provided by Greenwich Service Plus. This ensures that machinery operates effectively and provides a high quality standard of finish. In addition to this, staff perform routine checks on all machinery before use.

The vehicles used by the Parks, Estates and Open Spaces department are also maintained by The Royal Borough's Fleet Management Service. The Borough is accredited to the Fleet Operator Recognition Scheme (FORS). FORS is a voluntary accreditation scheme for fleet operators which aim to raise the level of quality within fleet operations, and to demonstrate which operators are achieving exemplary levels of best practice in safety, efficiency, and environmental protection.

Organisational Chart

Parks, Estates & Open Spaces - Management Structure Chart 2021



Budget Information

The budgets used to maintain parks and open spaces are currently split into two areas, Horticulture / Park Rangers Operations and Property Services.

Horticulture / Park Rangers Operations

Revenue Spend for 2021/22= £36,847

Capital Spend for 2021/22= £11,566

Property Services

The corporate budgets for both planned and responsive maintenance of The Royal Borough's property infrastructure are held by Greenwich Property Services in the Directorate of

Regeneration Enterprise and Skills. Planned works are carried out on a strict basis of corporate priorities. Responsive repairs are carried out for minor items as and when they arise.

Marketing

Information about local parks within the borough can be found on the Royal Borough of Greenwich's website www.royalgreenwich.gov.uk

Events at Horn Park are promoted by posters and flyers distributed and displayed locally. Adverts are also entered in the local press and the Royal Boroughs media desk team promote on social media platforms.

PART II: WHERE DO WE WANT TO GET TO?

VISION

The plan aims to aid the efficient and effective management of the site to create a safe, clean and enjoyable experience for the local community and visitors and help to achieve The Royal Borough's strategic intentions for the green space strategy by developing a vibrant and sustainable park.

General Objectives

- To reduce Anti-Social Behaviour in the park
- To improve the health and well-being of visitors and residents by offering a well maintained and quality park for active recreation and/ or relaxation
- To protect biological assets and increase biodiversity
- To realise the potential of the park as a cultural and historical place to visit through a programme of publicity, information and events
- To work with the local community in identifying local priorities for funding of the park
- To ensure that the activities and events in the park celebrate and promote the borough's rich diversity and that it is accessible to everyone

ANALYSIS & ASSESSMENT

Ecology

Biodiversity at Horn Park is promoted by having a wide mix of tree species, a meadowland section, small developing woodland and established hedges within the park. In 2001, nearly 2000 native trees including Willow, Ash, Alder, Poplar, Birch, Buckthorne and Oak were planted in the north western corner of the park. There is an established hedge around some of the perimeter of the park and the hedgerow dividing the park is predominantly Hawthorne.

An ecological survey of Greenwich's meadows was commissioned by Parks and Open Spaces in August 2005. The survey was performed by Groundwork South East London and covers 12 meadows in 7 parks. The section of the meadow survey that deals with Horn Park is included in this plan as Appendix III. The Meadowland section of Horn Park is cut infrequently in accordance to a maintenance schedule that was created according to the aforementioned Greenwich meadow survey 2005.

To further encourage biodiversity eight bird and five bat boxes were installed on site early in 2008. In 2018 new shrubs were planted at the entrances to the park and a small avenue of Cherry Trees. This was funded by the local councilors ward budget scheme.

Infrastructure

Extensive improvements have been made to the footpaths in 2011.

Parks & Open Spaces now uses a single design to give parks a coherent identity. When the park furniture in Horn Park is damaged, it will be replaced with a consistent style of bench / bin / sign.

In 2018 a number of litter bins, dog waste bins and a picnic bench were identified as needing replacement. This was funded by the local councilors ward budget scheme.

Sport & Recreation

Horn Park provides a range of recreation, but there is limited scope to develop further sport or recreation within the site due to its size.

Management

Management of Horn Park currently satisfies the wider users of the site. However, ongoing consultation is recommended to continue to ascertain user needs and aspirations.

The Parks Department works in close partnership with The Royal Borough's Community Safety Officers, the Police Safer Neighbourhood Team (SNT) and other Enforcement Agencies to tackle anti-social behaviour and crime affecting the park. Targeted and joint agency work is undertaken as and when necessary. For example, joint enforcement patrols were undertaken in 2011 with both Royal Borough Enforcement Officers and Warranted Parks Officer to monitor compliance of Dog Control Orders adopted by The Royal Borough.

The Royal Borough and SNT share appropriate information to ensure enforcement actions are co-ordinated and Parks Officers regularly attend community and park friends meetings to identify and respond to any local concerns regarding the park. On the Royal Borough's part, the lead task owners for addressing anti-social behaviour concerns are Senior Park Ranger Adam Jenkins and Park Ranger Manager Paul Martin.

Visitor & Community Needs

Horn Park benefits from having an active 'Friends of' group. The site would also benefit from additional signage, especially at the entrances to the park, plus some additional signage in the adjoining streets to inform visitors of its location.

Consultation

Consultation with the Horn Park Friends, the Horn Park Forum and the wider community is undertaken on an ongoing basis to identify priorities for further improvements. The Parks Forum plays a more strategic role in policy and funding. Aspirations on key improvements to the park have been met, but ongoing consultation and communication with the 'Friends of' group will continue to ensure further needs and aspirations are also met.

Parks Officers, the local MP, Horn Park Friends and Forum, and representatives from the local community attend meetings to update on future events / projects etc within the park.

Parks community engagement officer engages with the friends group.

STRENGTHS

- Active Friends group
- Good local park enjoyed by the local community
- Wide range of facilities for all ages; playground, skate park, multi-use games area and outdoor gym.
- Conservation meadow of local ecological importance

CHALLENGES

- ASB within the site – in particular graffiti, vandalism and damage to trees by dogs and trees being pulled out by vandals
- Limited marketing
- Increasing usage
- Some improvements required to park fencing and furniture

RECOMMENDATIONS

- Continue consultation with key stakeholders to continue to identify priorities for improvement and feed results into the Management Plan as appropriate
- Work to further improve marketing/awareness of the site.
- To seek inward investment as appropriate
- To reduce anti-social behaviour in Horn Park
- Improve use by all sections of the community and explore possibility of more community events in the park
- Undertake a review of the ecology of the park with a view to increasing biodiversity
- To achieve a recognised standard for the park – Green Flag

PART IV: HOW WILL WE GET THERE

Timescales as given in this document are as follows;

- Short Term – Within one to two years from adoption of this plan
- Medium Term – Within three years from the adoption of this plan
- Long Term – Within five years from the adoption of this plan

Horn Park Action Plan				
Recommendation:	Proposed Action:	Timescale: Long/Medium/ Short Term	Action by:	Status:
Continued consultation with Horn Park Friends and other stakeholders & feed results into Plan	Continue consultation with Friends of group and other stakeholders on management plan. Continue to identify priorities for inward investment. Feed results of consultation into document. Review / amend plan where appropriate.	Ongoing	Parks, Estates & Open Spaces	Open
To seek Inward Investment as appropriate	Develop funding options framework that identifies potential sources of funding and deadlines for each fund. Undertake work to secure new funding streams as appropriate	Ongoing	Parks, Estates & Open Spaces	Open
To reduce Anti-social behaviour in Horn Park	Regular assessments on anti-social behaviour are carried out by Park Ranger Management. Both Paul Martin and Adam Jenkins work with the Police & Safer Neighbourhood Teams as appropriate.	Ongoing	Parks, Estates & Open Spaces	Open

Horn Park Action Plan				
Recommendation:	Proposed Action:	Timescale: Long/Medium/ Short Term	Action by:	Status:
To improve marketing of site	Review how site is currently marketed. Investigate ways of improving marketing of site (through use of different mediums etc) and through improvements to current marketing material	Medium Term	Parks, Estates & Open Spaces	Open (engagement officer in regular contact with media desk regarding using social media outlets to promote.
To achieve a recognised standard for the park	Continue to apply for a Green Flag Award (ongoing after application)	Ongoing	Parks, Estates & Open Spaces	Achieving
Undertake the 5-year arboricultural assessment within the park	Liaise with manager of the tree maintenance unit to carry out an updated arboricultural survey within Horn Park	Medium Term	Parks, Estates & Open Spaces	Open
Undertake an assessment of the ecology of the park	Carry out an assessment of the current ecology of site. Investigate ways of increasing biodiversity. Carry out planting as appropriate	On-going	Parks, Estates & Open Spaces	Open
To improve park furniture	Identify funding and replace damaged litter bins, dog waste bins and seating.	On-going	Parks, Estates & Open Spaces	Open

To increase planting within Horn Park	Identify funding for additional planting to increase biodiversity, colour and interest on site	On-going	Parks, Estates & Open Spaces	Achieving (friends group take part in annual bulb planting initiative)
To reduce two stroke petrol usage (departmental)	To investigate and test battery operated handheld grounds maintenance equipment with a view to having 25% of the handheld fleet battery operated by the end of 2023	Long Term	PE&OS	Achieved 2022
To improve play facilities	Seek funding to support playground improvements	Long Term	Parks, Estates & Open Spaces	Achieved 2022
To improve drainage	Seek funding to alleviate occasional flooding issue near the Winn Road entrance	Medium Term	Parks, Estates & Open Spaces	Achieved 2024
Horn Park Completed Actions From Previous Plan				
Recommendation:	Proposed Action:	Timescale: Long/Medium/ Short Term	Action by:	Status:
To improve use of site by all sections of the community and explore possibility of community events in the park	Through consultation, identify any user groups which are excluded from using site. Feed findings into Plan and action as appropriate:- Install radar operated locks to gates in Alnwick and Gavestone Road to accommodate disabled persons entry to site 24 hours a day	Medium Term	S Roedel	Completed

Increase native plantings and bio diversity in the park with funding from the Woodland Trust	Planting of naturalized bulbs and native whips on the fringe of the woodland area by the Friends of Group	Short Term	S Roedel	Completed
Undertake an arboricultural assessment within the park	Liaise with manager of the tree maintenance unit to carry out an arboricultural survey within Horn Park	Medium Term	Parks, Estates & Open Spaces	Completed 2018

Important Note: Improvement actions requiring investment are subject to funding being secured. There are no additional funds available from The Royal Borough unless it has been identified against a specific action.

PART V: HOW WILL WE KNOW WHEN WE'VE ARRIVED?

MONITORING AND REVIEW

There will be a need to keep a working document copy of the Management Plan within the parks office so that issues and changes that arise as well as new information can be documented, and the action plan can be regularly reviewed and completed works documented within it as part of the Parks Service business planning process.

Upon review, the new management plan will make note of the works performed and review the success of those works in the action plan section.

APPENDIX I

References

Ordnance Survey Map 1869 – Map 6
1873 “London District” Sheet 4 Geological Survey
1924 Ordnance Survey Map with Geological
Thomas Milne’s Land Use Map of London and Environs in 1800, London Topographical Society, 1975-
6, Pub No. 118 & 119
Royal Greenwich Core Strategy
Council GIS

APPENDIX II

Legislation, policies and strategies affecting park management

As highlighted earlier in the plan, Royal Borough of Greenwich's Parks and Open Spaces department operates within a wide framework of national, regional and local policy statements and strategies. The main documents impacting on the development of this plan are listed below.

The Greenwich Strategy

The Greenwich Strategy sets out the vision for The Royal Borough of Greenwich as being the place to live, work, learn and visit. This vision underpins all of the strategies produced by the Royal Borough of Greenwich and directly impacts on all service plans and service delivery.

The Cultural Strategy

Parks and Open Spaces is one of six 'areas' considered by the Cultural Strategy. The Strategy has five over-arching themes: - Equality and Access, Sustainability, the Cultural Economy, Achievement and Excellence and Partnerships. All of these aims are relevant to this management plan and have been considered in developing the opportunities and priorities for this site.

Green Space Strategy

The Green Spaces Strategy sets out The Royal Borough's strategic intentions for its green assets and its vision of the positive contribution that Greenwich's open networks make to our lives. The thematic objectives (community safety, biodiversity, education and culture, culture & events, tackling inequality, sport, health & well-being) are all relevant to the management plan for Horn Park.

Parks & Open Spaces Service Plan

The Parks & Open Spaces department aims to develop, manage, ensure accessibility and maintain to a high standard the borough's Parks, Open Spaces, Woodlands, Tree Stock, Cemeteries, Playgrounds, Sports Pitches, Allotments and other outdoor facilities. To meet the needs of the community and deliver The Royal Borough's core objectives where applicable to the service, and specifically regarding the provision of a clean and well cared for environment and supporting Health and Quality of Life for the local community.

Through consultation with local residents/visitors, the management plan for Horn Park supports these aims by ensuring accessibility of the site and that it meet the needs of the local community. It is envisaged that it will also assist with achieving the aim of mainlining the site to a high standard. This document assists with achieving the following key tasks from the Action Plan: -

ISO 9001:2015- Quality Management System

The Parks, Estates & Open Spaces arboricultural services is accredited to the ISO 9001:2015. The ISO 9001 Quality Management System is used by the Royal Borough to manage their activities and resources to guarantee a quality service. The ISO 9001 helps the Royal Borough achieve customer satisfaction because it provides a framework for service analysis and definition and for the improvement of processes. The four main parts covered under the Quality Management System are (i) management

responsibility (ii) resource management (iii) process management and (iv) measurement, analysis and improvement.

ISO 14001: 2015 – Environmental Management System

The Parks, Estates & Open Spaces horticultural and arboricultural services are managed in conjunction with an Environmental Management System that is accredited to the internationally respected EN ISO 14001:2015 Environmental Standard. The Royal Borough's grounds maintenance and tree maintenance activities are controlled to ensure the service is delivered in an environmentally sustainable manner and to reduce any negative effects on the environment that may be their operations. Parks, Estates & Open Spaces works towards sustainable development and continual environmental improvements.

ISO 45001:2018 – Health, Safety & Wellbeing Management System

The Parks, Estates & Open Spaces arboricultural services is accredited to the ISO 45001:2018 which provides a framework for managing Occupation Health & Safety risks and opportunities. The aim is to prevent work related injury and ill health to workers and to provide safe, healthier workplaces by eliminating hazards minimizing risks by taking effective preventative and protective measures. The intended outcomes of the Health, Safety and Wellbeing Management System include (i) continual improvement of performance, (ii) fulfilment of legal and other requirements and (iii) achievement of Health & safety objectives.

Royal Borough of Greenwich

Community Services

Parks, Estates and Open Spaces

Pesticide Policy

(Authorised by the Parks, Estates & Open Spaces Manager)

As part of a continual move towards better environmental practice, we aim to minimise the use of pesticide where possible and to promote the use of alternative maintenance and curative procedures in relation to Horn Park

We aim to:-

- Eliminate the hazards of pesticides
- Reduce the dependence of pesticides
- Promote alternatives to pesticides
- Communicate good practice through membership to PAN (Pesticide Action Network).

Objectives:-

- Control the problem of worm casting, without the use of ~~lumbricides~~
- To limit the use of selective herbicide to the ornamental areas only
- To not use insecticides
- To use organic fertilisers.

Dawn Squires

Head of Parks, Estates and Open Spaces

Royal Borough of Greenwich

Community Services Parks, Estates and Open Spaces

Use of Peat/Peat Based Product Policy

Background:

Peat is a Heterogeneous mixture of decomposed plant material (humus) that has accumulated in a water-saturated environment and in the absence of oxygen.

Peat lands play an important role in the biosphere. They affect hydrological dynamics and water quality and provide important habitats for plant and animal species.

The extraction of peat for use has a major negative environmental impact in the long term.

In recent decades peat has been dug in vast quantities for use by the plant nursery industry and horticulture.

Peat has particular calculable water conductive properties. Plant production in the UK is somewhat organised to use peat as an alternative to mineral soils because of its consistent qualities and PH level.

It is a non-sustainable product

Our Policy:

- In Parks and Open Spaces we do not use peat as a soil ameliorant or mulch.
- We do not use peat or peat based product in relation to tree or shrub planting
- We encourage our suppliers to use products other than peat in the growing of trees, shrubs and bedding plants
- We train our staff in the rationale of not using peat based products

Dawn Squires

Head of Parks, Estates and Open Spaces

Parks, Estates & Open Spaces

Oxleas Woods Centre
Crown Woods Lane
London
SE18 3JA



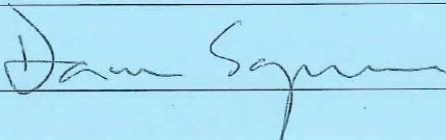
4.2 Environmental Policy

The Royal Borough of Greenwich recognises that environmental issues are of fundamental importance to our customers, and to our business success.

The Royal Borough of Greenwich aims to work towards the achievement of sustainable development and continual improvement.

Under the scope of its Environmental Management Systems, The Royal Borough of Greenwich strives to:

- Promote sustainability and the use of sustainable resources
- Promote conservation and environmental awareness
- Promote activities which enhance the environment
- Achieve continual improvements in environmental performance
- Prevent the release of pollution
- Minimise the release of waste, noise and emissions
- Minimise activities which have a negative effect on the environment
- Maximise activities which have a positive effect on the environment
- Comply with applicable legal and other requirements that relate to environmental aspects
- Work in partnership with other organisations in environmental management
- Set environmental targets built into the day to day running of the service
- Use products which have a minimum impact on the environment
- Provide training in environmental issues to all persons
- Communicate the Environmental Policy to all persons working for or on behalf of The Royal Borough of Greenwich
- Review Environmental objectives, targets and policy

Signed		Head of Parks & Open Spaces
--------	---	-----------------------------

Issue 09

Issue Date: 10/04/13

Ref: LC.EMS.P&OS

Page 6 of 40

Parks & Open Spaces COSHH Statement

Parks, Estates & Open Spaces are committed to ensuring safe working practices and to minimising the negative effects on the environment from our activities.

Control of Substances Hazardous to Health within Park, Estates & Open Spaces is through implementation of risk assessments on all substances where exposure could lead to an adverse effect on health or danger to safety, and the introduction of appropriate control measures.

COSHH assessments are undertaken by a trained member of staff and are reviewed annually.

Written records are kept to demonstrate that risks have been considered.

Control measures highlighted in the assessment are implemented and maintained.

Parks, Estates & Open Spaces employees only use products in conjunction with a COSHH assessment.

Health surveillance is used to evaluate effectiveness of control measures.

An up to date inventory is kept of all hazardous substances to which staff are likely to be exposed to during their work activities.

No other products may be brought into use without prior Management Review product approval.

Parks, Estates and Open Spaces Environmental Policy also sets guidelines for the use of substances hazardous to health.

Core Strategy

Local Councils have a duty to prepare a Core Strategy by law. The Greenwich Core Strategy (CS) sets out the vision for use of the land in the Royal Borough, and provides the main guidance for making decisions on individual planning proposals. The document is intended to cover the period 2013 – 2028. It is a legal document with the following purposes:-

- To provide a framework of acceptable uses within the Royal Borough, defining areas where development is not desired or where it needs to be carefully directed and;
- To provide a detailed basis for the control and development

The CS may be viewed at the Directorate of Regeneration, Enterprise and Skills, Planning Department, The Woolwich Centre, 35 Wellington Street Woolwich, SE18 6HQ, via The Royal Borough of Greenwich's website, or alternatively at a local library or online.

The Core Strategy designates Horn Park under the following policies

- Metropolitan Open Land OSI, OS2, OS(a)
- Green Chain OS3

For more details on each designation, please consult the full version of the CS via any of the venues described above using the references next to each designation.

Parks and Open Spaces Strategy

The 10 year Strategy, adopted in 2017 is centred on the following seven themes:

- **Park and open spaces management:** Ensuring our parks and open spaces are well managed, maintained in good condition and are safe to use;
- **Community engagement:** Ensuring we actively engage and work in partnership with local residents to provide good quality parks that meet the needs of the local community;
- **Nature and biodiversity:** Ensuring that areas and habitats are provided for wildlife and that they are protected from inappropriate development;
- **Environmental management:** Maximise resource efficiency by increasing recycling opportunities, establish better use of essential energy sources and controlling the use of pesticides and chemicals;
- **Recreation, health and wellbeing:** Ensuring that parks provide spaces for active recreation and quiet reflection and contribute to the health and well-being of the local community;
- **Regeneration and local economy:** Ensuring our parks are well designed, attractive to visitors and encourage enterprise and employment of local people; and
- **Culture and heritage:** Ensuring our parks are places for culture and that their heritage is preserved and celebrated.

The Biodiversity Action Plan

The Greenwich Biodiversity Action Plan is the first co-ordinated approach to conserving Greenwich's biodiversity. The aim of the plan is:

'To ensure the conservation, enhancement and public appreciation of the biodiversity of the London Borough of Greenwich'.

The Biodiversity Action Plan focuses on locally important habitats and species and has actions to ensure that they cover all relevant habitats and species. Initially actions may be focussed on those under the most pressure or where most advantage can be gained. However, it allows for all important habitats and species to be covered.

The Biodiversity Action Plan has been developed in partnership with local and regional groups and organisations and is available to download from The Royal Borough's website.

Legislation

The Parks Estates and Open Spaces department operates within the frameworks set out by the following legislation, and therefore, the legislation may impact upon the delivery of service of the

Parks Estates and Open Spaces department both financially, through planning and human resources. This is not a comprehensive list but is indicative of key pieces of legislation relating to PE&OS.

- Alcohol Consumption in Public Places Order 2003
- Clean Neighbourhoods Act 2004
- Control of Pesticide Protection Act 1986
- Country Code 1981
- Country side and Rights of Way Act 2000 and increments
- Countryside & Right of Way Act 2000
- Disability Discrimination Act 1998
- Health & Safety at Work Act 1998
- Litter Act 1983
- Ministry of Housing and Local Government Provisional Order Confirmation (Greater London Parks & Open Spaces Act)1967
- Natural Environment and Rural Communities Act 2006
- Occupiers Liability Act 1957
- Road Traffic Act 1988 (as amended 1991)
- The 2004 Country Code
- The Anti Social Behaviour Act 2003
- The Dangerous Dogs Act 1991 & Dogs Act 1871
- The National Parks & Access to the Countryside Act 1949
- The Weeds Act 1959
- The Wildlife & Countryside Act 1981

In addition there are numerous bye-laws that relate to specific parks.

Dog Control Orders (Now covered under Public Space Protection Orders, Anti-social Behaviour, Crime and Policing Act 2014)

Dog fouling has been recognised as being a problem within many of The Royal Borough's parks and open spaces. The Clean Neighbourhoods and Environment Act 2005 makes it possible for local authorities to introduce Dog Control Orders. The Royal Borough of Greenwich has adopted five separate control orders across the borough including Horn Park, which provide a fixed penalty for non-compliance.

These orders would make it an offence for persons in control of their dog(s) to:

- Not clean up after their dog has fouled.
- Have more than 4 dogs in their control at one time.
- Not to have their dog on a lead in designated areas
- Not to have their dog on a lead and kept on a lead when instructed to do so by an authorised officer.
- To allow their dog(s) to access designated dog exclusion areas.

Tenancy Services Officers, Officers from Parks and Open Spaces, Police Community Support Officers and the Dog Warden are authorised to issue fixed penalties.

APPENDIX III

2005 Greenwich Meadows Survey

2.13 Horn Park

Brief Description

This site has 3 distinct areas;

Area A – Is an area of rough grass with few meadow flowers and is heavily shaded by trees (See photo 21). The topography of the area is flat with a gentle downwards slope to the east.

Area B – An attractive area of meadow with good numbers of wildflowers and mown paths through the area. The topography of the area is flat with a gentle downwards slope to the east. (see photo 22)

Area C – This is a strip of rough grass with trees planted amongst the sward and a number of mature Willow trees on the western boundary. The area is fairly flat and level. (see photo 23)

Recommendations

Area A – The limited diversity and small numbers of meadow flowers suggest that this site would benefit from being left un-mown. This would provide rough grass and scrub habitat, which is valuable for invertebrates, small mammals and nesting birds. Management of the area could be confined to occasional flailing areas of the grass and removal of scrub every 2 – 3 years.

Area B – This area, in its current state has significant value as a large piece of traditional hay meadow. However the botanical interest and number of meadow flowers within the sward could be improved. Taking earlier hay cut in mid to late July would remove a greater amount of biomass, (and hence nutrients) from the system.

This would favour the establishment a more diverse meadow sward and would also enable the production of good quality hay. The area should then be mown regularly (every 2-3 weeks) in the late summer / early autumn until the end of the growing season. This will further encourage the establishment of a sward of finer grass and meadow flower species.

Area C – As the newly planted trees grow, this area will gradually become more shaded. Because of this the area would be best left un-mown, allowing scrub to establish and provide rough grass habitat. This would be valuable for invertebrates, small mammals and nesting birds.



Photo 21. Looking north towards the area of rough grass heavily shaded by trees



Photo 22. Looking east, down the slope across the area of meadow.



Photo 23. Looking west across the area of newly planted trees

Species record:	
Common name	Latin Name
Cow Parsley	<i>Anthriscus sylvestris</i>
Hedge Mustard	<i>Sisymbrium officinale</i>
Black Horehound	<i>Ballota nigra</i>
Field Bindweed	<i>Convolvulus arvensis</i>
Black Knapweed	<i>Centaurea nigra</i>
Wild Carrot	<i>Daucus carota</i>
White Clover	<i>Trifolium repans</i>
Common Bird's-Foot-Trefoil	<i>Lotus corniculatus</i>
Creeping Buttercup	<i>Ranunculus acris</i>
Common Ragwort	<i>Senecio jacobaea</i>

Common Sorral	<i>Rumex acetosa</i>
Common Cat's-ear	<i>Hypochoeris radicata</i>
Red Clover	<i>Trifolium repans</i>
Yarrow	<i>Achillea millefolium</i>
Meadow Buttercup	<i>Ranunculus acris</i>
Bristly Oxtongue	<i>Picris echioides</i>
Goat's beard	<i>Tragopogon pratensis</i>
Perennial Ryegrass	<i>Lolium perenne</i>
Yorkshire Fog	<i>Holcus lanatus</i>
Rough Meadow Grass	<i>Poa Trivialis</i>
Cock's foot	<i>Dactylis glomerata</i>
False Oat Grass	<i>Arrhenatherum elatius</i>
Red Fescue	<i>Festuca rubra</i>
Meadow Foxtail	<i>Alopecurus pratensis</i>
Wall Barley	<i>Hordeum murinum</i>

