

# East Greenwich Pleasaunce Management Plan 2025 – 2030



## CONTENTS

<b>PART 1: WHERE ARE WE NOW?</b>	<b>3</b>
Park Address and Contact Details	3
Introduction - What is a Park Management Plan?	4
Description of the Park	5
Heritage of the Park	6
Access to the Park	7
Ecology and Landscape	8
Park Infrastructure	10
Recreation in the Park	12
Park User Information	14
Management of the Park	15
<b>PART 2: WHERE DO WE WANT TO GET TO?</b>	<b>19</b>
Vision	19
Strengths	19
Challenges	19
Recommendations	19
<b>PART 3: HOW WILL WE GET THERE?</b>	<b>20</b>
Action Plan	20
<b>PART 4: HOW WILL KNOW WHEN WE HAVE ARRIVED?</b>	<b>22</b>
Monitoring and Review	22
<b>APPENDICES</b>	<b>23</b>
Appendix I    References	23
Appendix II    Legislation, Policies & Strategies	24
Appendix III    East Greenwich Pleasaunce History	36
Appendix IV    P&OS Management Structure Chart	38
Appendix V    Annual Maintenance Schedule	39
Appendix VI    Examples of Event Leaflets	40
Appendix VII    Previous action plans	41

Please note that all maps and diagrams contained within this plan are derived from the Royal Borough of Greenwich GIS and are subject to copyright. See [Appendix I](#) for References.

## PART I: WHERE WE ARE NOW

### Park Address and Contact Details

Name of Site: East Greenwich Pleasaunce

Address: Chevening Road  
Greenwich  
London  
SE10 0LB

Address: Parks, Estates & Open Spaces  
Oxleas Woods Centre  
Crown Woods Lane  
London  
SE18 3JA

Tel. 020 8856 0100

Email [parks@royalgreenwich.gov.uk](mailto:parks@royalgreenwich.gov.uk)

The Parks Strategy & Development Team can be contacted for any further information (using the contact details provided above).

East Greenwich Pleasaunce benefits from a dedicated Friends of Group.





## **Introduction – What is a park management plan?**

Management Plans are an important aid to the efficient and effective management of a site. A Plan forms part of a process for evaluating performance, consulting and involving people, strategic planning and providing continuity. Individual plans are specific to each park and will deliver aims and objectives specific to the needs of the local community who will be directly involved in its formulation.

A Park Management Plan also provides an excellent opportunity to collate a wealth of information relating to the park that the management authority possesses, into a single comprehensive document.

### **Purpose of this Management Plan**

As well as developing a Parks & Open Spaces Strategy, the production of individual management plans for a park is good practice and is in accordance with The Royal Borough's commitment to providing Best Value.

This Management Plan will provide a vital resource for parks staff in maintaining and developing East Greenwich Pleasaunce as a resource for the community and visitors to the area and as such will be under constant informal review. The Management Plan will be reviewed of progress and updated annually, with a five-year comprehensive review in 2030.

It is hoped that this plan will help to encourage relationships between The Royal Borough and the community and provide access to information on the management approach to this site, as well as providing a framework around which any future decisions concerning this site will be taken.

In addition, it is hoped that the management plan for East Greenwich Pleasaunce will assist with allocating existing and securing additional resources for developments on this site that this management plan specifies.

Future actions/priorities for this site are identified in the Action Plan to this document. This management plan therefore provides a benchmark against which future progress can be measured.

### **Wider Policy Context**

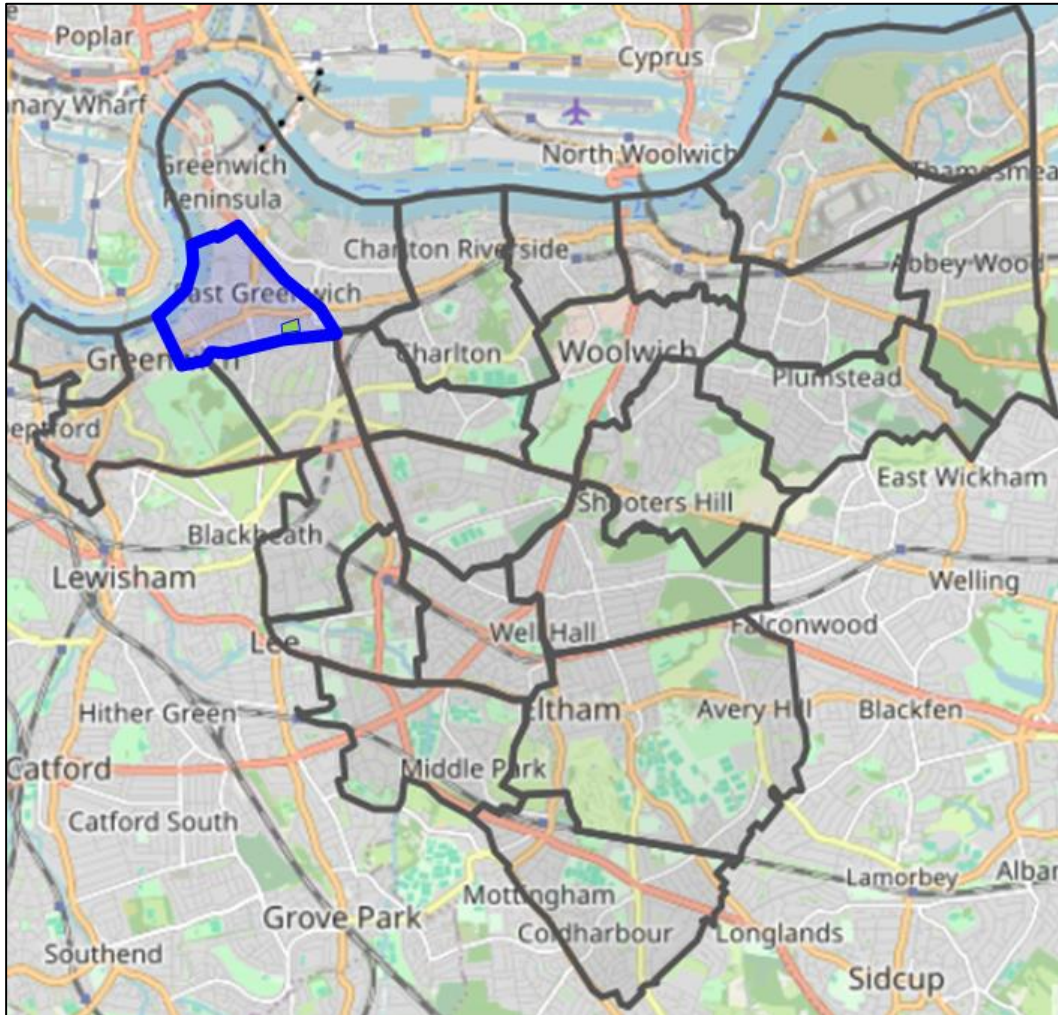
The Management Plan has been written within the context of a wide framework of national, regional and local policy statements and strategies.

A number of strategies have been considered in the production of this document to ensure that the priorities identified in this plan deliver and compliment the appropriate aims and objectives identified in them.

The main documents impacting on the development of this plan are listed in [Appendix II](#).

## **Description of the Park**

The park is owned by The Royal Borough of Greenwich. East Greenwich Pleasaunce is a small park in the East Greenwich Ward of Greenwich, found in the northwest area of The Royal Borough of Greenwich and located at grid reference TQ399 78.



*Location of East Greenwich Pleasaunce within the East Greenwich Ward*

It occupies a total area of 2.4 hectares that is surrounded by Halstow Road residences on its eastern side, Chevening Road residences on its northern side, Annandale Road residences on its western side and the Greenwich East Coast Railway Line on its southern side.

The park is an area of gently north sloping land at around 15 meters above sea level, enclosed by a 2 meter high brick wall on all sides. The geology underlying the park is defined by the Borough GIS as Upper Chalk in the northern half of the park and Thanet Sand in the southern half of the park.

The Pleasaunce is categorised under the Greenwich Green Space Strategy as a primary purpose classification of Local Park

The Park is open daily by 9am and closed by dusk (times vary throughout the year).

## Heritage of the Park

East Greenwich Pleasaunce was originally part of farming land until 1857 when it was purchased to become a naval cemetery for Greenwich Hospital. The site remained a burial ground until 1926 when it was sold to The Royal Borough of Greenwich as a public park and arboretum.



There are many remaining gravestones within the pleasaunce, some remain legible and combined with the connection with the Greenwich Hospital provide a source of interest for the public particularly as several of the officers buried in the Pleasaunce were of great importance. Many of the burials within the Pleasaunce were veterans of the battle of Trafalgar and the Crimean war. More recent burials include naval personnel from the first and second world war. Within the Pleasaunce, side by side, ex-seaman rest in peace with Rear admirals, Petty Officers with civilian instructors, and naval surgeons with schoolmasters. Signs have been installed next to the memorials in 2013 in an effort to preserve the historic artefacts within the park. Further details of East Greenwich Pleasaunce's heritage and history can be found in [Appendix III](#).



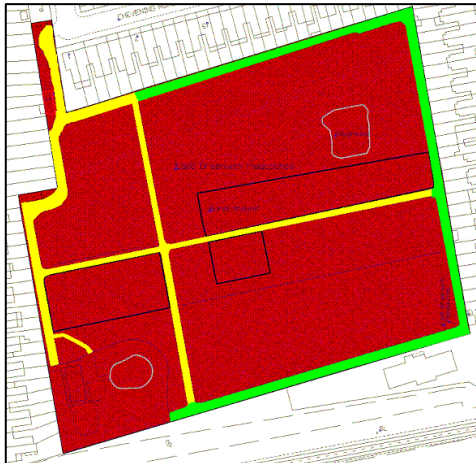
*East Greenwich Pleasaunce War Memorial Plaque*



## **Access to the Park**

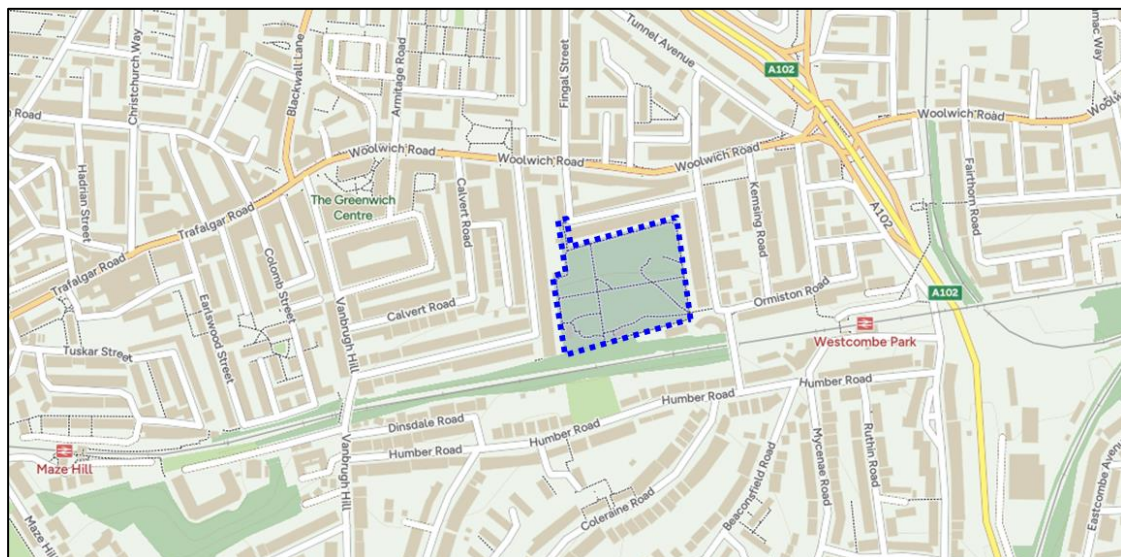
There are two entrances to the park. The main entrance of the park is on the corner of Chevening Road. This also allows access to vehicles for maintenance and deliveries. The second entrance is a pedestrian entrance in Halstow Road.

East Greenwich Pleasaunce is sited on a slope which is around 1 in 14, so most of the park is accessible according to current legislation. On the whole, the paved pathways within the Pleasaunce are in good condition.



The plan on the left shows Bitumen pathways in yellow and gravel pathways are shown in green. The area in the bottom left hand corner containing no pathways is an area leased to The Bridge Trust (a Community Interest Company CIC).

There are gravel pathways from the Halstow Road entrance to the Park Café. This was refurbished in 2014 and a gravel terrace was installed in front of the café. The pathway down the eastern side of the Pleasaunce is also gravel and on a slightly steeper slope, so areas of the park reached using this pathway are not quite as accessible as other areas.



As shown in the map above, the closest British Rail stations to East Greenwich Pleasaunce are Westcombe Park Station & Maze Hill Station, which are a short walk away.

Buses 129, 177, 180, 286, 422 all pass close to the park on Woolwich Road (A206).

Free limited parking facilities are available on the surrounding residential roads.

## **Ecology and Landscape**

The landscape within the Pleasaunce provides an important break within an area that would otherwise be considered deficient in open space. East Greenwich Pleasaunce is completely surrounded by a high brick wall with a long row of pleached limes along three sides of the walls stretching the full length of the eastern, northern and western sides. Pleached limes is a horticultural term for the way limes are grown close together and trained with their branches intertwining. The limes provide good screening of the wall and shield the park to and from the residential properties surrounding the park. In addition to the limes, there are several other trees within the park of interest, the most notable being a rare weeping beech, which is within the officers' burial area (see photo below).



An arboricultural assessment is carried out every 5 years. The most recent tree survey at East Greenwich Pleasaunce was carried out in 2022. A copy is available on request from the Oxleas Woods Centre.

The Pleasaunce has many mature trees and tree species such as – mock orange (*Philadelphus lewisii*), hawthorn (*Crateagus spp*), silver birch (*Betula pendula*), ash (*Fraxinus sp*), variegated holly (*Illex aquifolium 'Variegata'*), lexu holly (*Illex wilsonii*), walnut (*Juglans sp*), English oak (*Quercus robur*), poplar (*Populus sp*), cherry (*Prunus sp*), Austrian pine (*Pinus nigra*), Swedish whitebeam (*Sorbus intermedia*), lexula maple (*Acer rubrum 'Drummondii'*), weeping beech (*Betula pendula var. gracilis*), lilac (*Syringa lexulate*), holm oak (*Quercus lex*).

A White Mulberry (*Morus Alba Pendula*) and a Wych Elm (*Ulmus glabra Camperdownii*) were planted during 2020 to celebrate national tree week.

Parks reached its target of planting 2022 trees by 2022 ahead of schedule. In 2020 the 2022<sup>nd</sup> tree was planted in East Greenwich Pleasaunce. A Dawn Redwood (*Metasequoia glyptrobodies*) was planted by Children from Halstow Primary School, The Council Leader – Cllr Thorpe, Cllr Scott Macdonald and Cllr Khairah. (see photo on the next page.





A small orchard of fruit (pear, plum and apple) trees was planted in the park in 2011 by the Friends Group working in conjunction with City Orchards (charitable organisation). Additional fruit trees were planted in the park in 2013. The community-run orchard is maintained by local people, run by the Friends of East Greenwich Pleasaunce and the London Orchard Project. The group is called Pip! (Planting in the Pleasaunce) and the Orchard has been named the East Greenwich Pleasaunce Memorial Orchard.

To increase biodiversity within the Pleasaunce, sowing of wildflower seed including *Anthemis arvensis*, *Agrostemma githago*, *Centaurea cyanus*, *Chrysanthemum segetum* and *Papaver rhoeas* along the northern border of the park has taken place.

Biodiversity is also increased by implementing small areas of conservation grass where practical and leaving naturalized areas of grass around the headstones and graves.

All green waste recycled off site and shredded to provide mulch for shrub beds and borders. Ecological practices such as standing dead wood, log piles are in place, and on site,





## **Park Infrastructure**

There are currently four buildings within East Greenwich Pleasaunce;

- The building in the southwest corner of the park is of brick construction and leased to The Bridge Trust – A Community Interest Company. It is open Monday to Friday for morning and afternoon playgroup sessions. The building can also be hired out for use in the community.
- A brick built shed on the western side of the park backing onto the Pleasaunce's perimeter wall was used previously for tool and machine storage. (the building can be seen in the 1860 maps). The building was refurbished in 2013 and the Friends used the building for their storage.
- The building near the Chevening Road entrance is a toilet block of brick construction. In 2008 the toilets were re-wired to provide light and power and the plumbing serviced. And in 2009 the building had a new roof. Subsequently the building is now used by the friends of EGP to support community events.
- A new café building including public toilets was built in the park in 2009. "Pistachios in the Park" is open seven days a week serving food, drinks, ice cream etc. The cafe is housed in an award-winning eco-friendly building, which was named Green Building Winner in the New Shopper's Green Guardian awards 2008. Designed by Alexander Sedgley architects, it features thermally-efficient building blocks, a grass roof, solar panels to power underfloor heating, and metal trellising as cladding for climbing plants to grow up



The responsibility for maintaining buildings within Parks and Open Spaces lies with Corporate Property Services within the Directorate of Place & Growth. The café has a repairing lease for the building and responsibility for the cleaning of the public toilets.

There are a number of park benches and picnic tables conveniently located around the park, including a memorial seat just outside the dog free area. A number of litter bins are situated throughout the park and they are emptied / cleaned regularly helping to maintain the park in a good condition.



The Pleasaunce contains interpretational signage which details the history and heritage contained within the site which is located close to the Chevening Road entrance. It also carries the Council's emergency phone numbers. In addition to this The Friends of East Greenwich Pleasaunce have a notice board at each entrance of the park which they use to promote park events and post general park information. There is also directional signage situated in Halstow Road indicating location of the park.

Lighting was installed throughout the park along the perimeter pathway from Halstow Road to Chevening Road in 2013. The main gates / railings by the Chevening Road entrance were repainted in 2012.

*Plan of East Greenwich Pleasaunce*



## **Recreation within the Park**

Due to the size of the park and the limited space available the range of uses available to visitors is limited to passive recreation and minimal active recreation activities. Activities available within the park include; dog walking, history and nature studies, sightseeing (great view of canary wharf from near “The Bridge”), informal ball games and picnics, use of the children’s playground, table tennis, use of the Café and The Bridge Centre.

### **Pistachios in The Park Café**

The café is a thriving business and a real asset to the park. It has proved to be very popular and has increased footfall in the park considerably. It has become a meeting place for many local residents to sit and relax and enjoy food and drinks. The Café actively supports public events and hosts its own regular events throughout the year

### **The Bridge Community Centre**

The Bridge is a Community Centre run by volunteers through a not-for-profit Community Interest Company. Situated in the corner of East Greenwich Pleasaunce in the former under 5s building, is a place that the whole community can use for activities every day of the week. Currently it has an extended licence from the Royal Borough and can offer volunteer run groups from 8am till 6pm as well as holding parties at the weekend. Play & Stay sessions with a variety of activities aimed at the under-5s are held at the Bridge, in morning and afternoon sessions and a gardening club is also available to join. Inside the Bridge building there is an inside play area with a ball pit, playhouse, slide and climbing frame, lots of toys, books and dressing up clothes. Outside there is a safe and enclosed playground for site users. An additional gate and pathway from the Bridge was installed in 2011 to give users of the facility a more direct route to park & café.

## **Park Events**

An annual commemoration service is held in East Greenwich Pleasaunce on Trafalgar Day attended by The Mayor, ward councilors, and local residents and groups. The event is organised by the Friends of Group supported by The Royal Borough of Greenwich.



*Trafalgar Day*



Other events facilitated by the Friend's of East Greenwich Pleasaunce include:-

- Christmas Carols in the Pleasaunce
- Easter Egg Hunts
- Blind Auction Children's Treasure Hunts &
- Arty picnic in the Pleasaunce
- Annual Parksfest
- Boules competitions

An annual Wassail event is organized by the community orchard group.

### **Playgrounds**

The largest open area which is uninterrupted by trees, gravestones and changes of ground level, is within the fenced off dog free area in the north eastern section of the park. There is a public playground inside this area which is separated by a low metal fence and is designed to be used by children between the ages of 3 and 13. The play equipment conforms to European Union standards EN1176 and EN1177 in regard to installation and surfacing. The equipment is visually inspected three times a week by Parks, Estates & Open Spaces staff, with a more detailed inspection undertaken on a bi-monthly basis and an independent inspection on an annual basis.

### **Table Tennis**

An outdoor table tennis table donated by the English Table Tennis Association was installed in the park in 2010 to provide some active recreation.

The Friends Group store some portable sports / active recreation equipment.

## **Park User Information**

The park appears to attract a range of people including mothers & toddlers using the “The Bridge”, local residents using the café and walking their dogs, school children from the local school’s etc.

The Demographic information contained in this section is gathered from a variety of sources, including the 2021 Census Information on the London.gov.uk website under Ward profiles. The information relates to East Greenwich Ward as a whole and not specifically to the area surrounding East Greenwich Pleasaunce (and use of the Pleasaunce is not restricted to residents of the East Greenwich Ward).

The size of the East Greenwich Ward is 131.3 hectares and the resident population in 2021 was 14,480.

### **Age**

% of children 0-15 = 2,500

% of persons working age 16-64 = 10,857

% of persons 65+ = 1,125

### **Ethnic Group**

Asian, Asian British or Asian Welsh = 1,535

Black, Black British, Black Welsh, Caribbean or African = 2,141

Mixed or Multiple ethnic groups = 946

White = 9,361

Other ethnic group = 495

## **Stakeholders**

### **The Royal Borough of Greenwich**

Directorate of Communities, Environment and Central (PE&OS)

Directorate of Place & Growth

Chief Executives (Communications/Community Engagement)

Neighbourhood Services (Neighbourhood Panels/Representatives)

### **Community**

Friends of East Greenwich Pleasaunce

Local school children, especially Halstow Primary School

The Bridge Trust Community Interest Company

Planting in the Pleasaunce (PIP)

### **Agencies**

Police, Fire & Rescue Service

Greenwich History Museum

### **Business**

The Park Café

### **Politicians**

Local MP

Ward Members



## **Management of the Park**

The management of the park described in this management plan is the responsibility of the Parks, Estates & Open Spaces service within The Royal Borough of Greenwich. For organisational structure chart see Appendix IV

The Parks, Estates and Open Spaces Service is located within the Directorate of Communities, Environment and Central. The Parks, Estates and Open Spaces Senior Management Team are accountable for the overall management responsibility of the Service. Individual management functions are devolved, and key functions are identified as follows:

- Horticultural Maintenance
- Park Rangers
- Parks Strategy & Development
- Arboricultural Maintenance
- Business Support

### **Staff Presence on Site**

A mobile grounds maintenance team (based at the local Blackheath Depot) undertakes regular maintenance and horticultural works on East Greenwich Pleasaunce. Scheduled / planned maintenance takes place at different times throughout the year. See Appendix V for details. Un-programmed and corrective maintenance takes place on an ad hoc basis according to need. The District Manager oversees all work.

Mobile Park Rangers perform a range of duties on site to ensure the safety of the public visiting the park, provide assistance where appropriate, visual inspections of playgrounds, opening and closing of gates & facilities, emptying of bins and maintaining the park free of litter.

### **Safety and Security of the Park**

East Greenwich Pleasaunce is overlooked on three sides by residential properties and the park has a safe friendly feel to it. The security in the park has been improved by the installation of lighting throughout the park in 2013.

Any anti-social behavior is reported via ASB reports and any recurrent problems are dealt with via increased patrols by the local police and PCSO's.

The Pleasaunce contains a number of community notice boards / interpretation signs that show emergency telephone numbers in the event of an accident or emergency.

### **Community Involvement at the Park**

The Friends of East Greenwich Pleasaunce was set up in 2006 and have been very successful in encouraging community involvement and usage of the park. They organise events and further promote the park within the wider community.

The Friends Group take part in a range of ecology projects including: bird feeders, bat boxes, and a wildflower garden for educational resources to be provided for local schools. They have also created a tree trail. The Friends of East Greenwich Pleasaunce have a Facebook page:

<https://www.facebook.com/EastGreenwichPleasaunce/>

There is a good working relationship between The Royal Borough's Parks Department and the Friends Group. The Friends of EGP use part of the former toilet block for storage and open the public toilets for park events.



*Easter Egg Hunt in the Pleasaunce*

The Royal Borough of Greenwich also provide continued support to the Café lease holder and “The Bridge Community Interest Company” who have buildings within the park.

### **Environmental Management of the Park**

The Royal Borough of Greenwich's Parks, Estates and Open Spaces section has an Environmental Management System (EMS) which is externally audited and certified against the internationally respected EN ISO 14001 Environmental Standard.

In line with The Royal Borough of Greenwich's aim of protecting the environment, the directorate has adopted an environmental policy which aims to ensure that service is delivered in an environmentally friendly manner. In line with the Environmental policy, the directorate has also adopted the peat use policy, pesticide use policy, and contains initiatives to minimise fuel and energy usage. The following sections are brief descriptions of each policy.

#### Peat Policy

One of the aims of the policy is to reduce or cut out the use of peat as it is not sustainable. The policy regarding the use of peat can be found in [Appendix II](#)

#### Pesticide Usage Policy

In line with the section's environmental policy, Parks, Estates and Open Spaces aim to minimise pesticide usage. The policy regarding the use of pesticides can be found in [Appendix II](#)

#### Energy usage

Parks, Estates and Open Spaces aims to minimise energy usage in delivering the Service. Maintenance equipment is serviced regularly to ensure that fuel consumption of mechanical equipment is maximised. Locally based gardener and park Rangers teams reduce the need for extensive travelling and again this reduces fuel consumption. Low energy bulbs are used in lighting

and external lighting is photo-sensitive and so are only on during hours of darkness. The café in East Greenwich Pleasaunce was built to an environmentally sound specification.

### Recycling

The Parks and Open Spaces department recycles all of its green waste which is taken to the Parks & Open Spaces depot at Shooters Hill where it is shredded so that it can be re-used as mulch on shrub areas etc. Waste from the litter bins is taken to The Royal Borough's Material Recycling Facility (MRF) where it is separated and then sent for recycling. Other mixed waste which can't be recycled is sent to a local incinerator which produces heat and energy for the adjacent housing estate. Some large wood is reused to create wood piles to encourage increased biodiversity and potential habitats for stag beetles and other invertebrates.

### Environmental Awareness

All staff have completed an Environmental Induction and have access to the Red Folder which contains the Environmental Management System and other relevant health & safety information such as risk assessments and COSHH assessments.

### **Budget Information**

The budgets used to maintain parks and open spaces are currently split into two areas, Horticulture Operations and Property Services.

#### Horticultural / Park Rangers Operations

Revenue Spend 2023/24 = £40,757.33

Capital Spend 2023/24 = £8,881.15

#### Property Services

The corporate budgets for both planned and responsive maintenance of the Borough's property infrastructure are held by Greenwich Property Services in the of Directorate of Place & Growth. Planned works are carried out on a strict basis of corporate priorities. Responsive repairs are carried out for minor items as and when they arise.

#### External Investment

The Parks Strategy & Development team are responsible for identifying and pursuing external revenue to make improvements to the park. The team supports the Friends Group and The Bridge in their funding applications such as Greenwich Neighborhood Growth Funding.

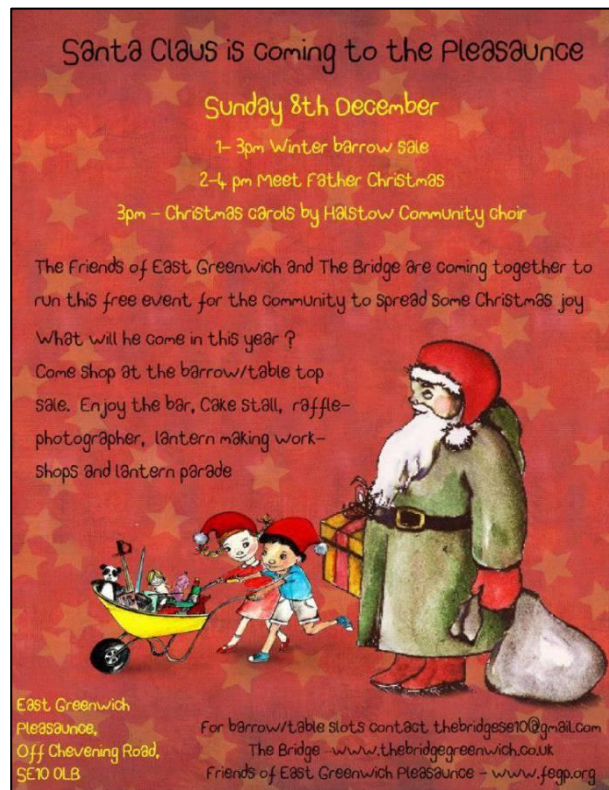
The Royal Borough used Playground to Stadium funding opportunities created by the 2012 Olympics to create a legacy of improved infrastructure and outdoor sports facilities in the Borough's Parks & Open Spaces. Funding allocated for East Greenwich Pleasaunce provided the installation of new lighting into the park in 2013. The new lighting runs from the main entrance at Chevening Road to the other entrance at Halstow Road via The Bridge and the café. The funding was also used to refurbish a former storage building for the Friends of Group to use as a store for portable sports/active recreation equipment in 2013.

### **Marketing**

Information about local parks within the borough including East Greenwich Pleasaunce can be found on the Royal Borough of Greenwich website [www.royalgreenwich.gov.uk](http://www.royalgreenwich.gov.uk)



The Friends of East Greenwich Pleasaunce also have a Facebook page which is used to promote park information and events. <https://www.facebook.com/EastGreenwichPleasaunce/> The Friends Group displays information on the community notice boards within the park and on their website. They host regular events in the Pleasaunce and facilitate other organisations to do so.



Please see Appendix VI for additional examples of leaflets advertising events in East Greenwich Pleasaunce.

The Park Café facility is marketed on a wider basis as well as locally to attract as much interest and custom as possible to secure its success.

### Green Flag Award

East Greenwich Pleasaunce has successfully retained the Green Flag Award for a number of years. The Green Flag Award® scheme is the benchmark national standard for parks and green spaces in the UK. It was first launched in 1996 to recognise and rewards the best green spaces in the country. Many years later it continues to provide the benchmark against which parks, and green spaces are measured. It is also seen as a way of encouraging others to achieve high environmental standards, setting a benchmark of excellence in recreational green areas. Green Flag Award® applications are judged against eight key criteria.

1. A welcoming place
2. Healthy, safe and secure
3. Clean and well maintained
4. Sustainability
5. Conservation and heritage
6. Community involvement
7. Marketing
8. Management

Additional information can be found on their web site <http://www.greenflagaward.org.uk/>

## **PART II: WHERE DO WE WANT TO GET TO**

### **VISION**

The vision for East Greenwich Pleasaunce is developed in conjunction with Friends of East Greenwich Pleasaunce priorities.

- To preserve the tranquility and character of the Pleasaunce
- To improve the health and well-being of visitors and residents by offering a well maintained and quality park for recreation and/or relaxation
- To continue to keep the park to a Green Flag standard.
- To keep the Pleasaunce safe and secure, especially after closing time.
- To realize the potential of the park as a cultural and historical place to visit and to build on the good work by the Friends of East Greenwich Pleasaunce
- To work with the local community in identifying local priorities for funding of the park
- To ensure that the activities and events in the park celebrate and promote the borough's rich diversity and that it is accessible to everyone.

### **STRENGTHS**

- Historically significant and aesthetically pleasing
- A well-established Friends group
- Well used by the local community
- Community run center based in the park
- Small café based in the park
- Play area for children and families
- Valuable green space within an urban area

### **CHALLENGES**

- Risk of historical artefacts and information being lost (e.g. names on gravestones etc.)
- Occasional anti-social behavior - graffiti and non-compliance with dog free zone
- Play equipment is coming to the end of its life.
- Continued maintenance of infrastructure and buildings

### **RECOMMENDATIONS**

- Continued consultation with Friends of East Greenwich Pleasaunce and other key stakeholders.
- Preserve existing historical artefacts in the Pleasaunce
- Undertake a review of the ecology of the park
- To seek funding to make improvements to the playground
- To monitor any ASB in the Pleasaunce
- To improve awareness/use of site by all sections of the community
- Improve publicity (on The Royal Borough's website/publications)
- Where at all possible, support the work of the Friends of EGP
- To continue to retain the Green Flag Award

## Part III: HOW WILL WE GET THERE

### ACTION PLAN 2025-30

Timescales as given in this document are as follows:

Short Term – Within one to two years

Medium Term – Within three years

Long Term – Five years and more

Recommendation:	Action:	Timescale: (Long/Medium /Short Term)	Action By	Status of Work:
Continued consultation with Friends of East Greenwich Pleasaunce and wider community to identify priorities for improvement.	Regular consultation with the Friends Group and other stakeholders to identify priorities for improvement	On-going	PE&OS / Friends Group	Open
To continue to achieve a recognised high standard for the park.	Retain the Green Flag Award for East Greenwich Pleasaunce. Carry out annual application and respond to judge's feedback	On-going	PE&OS	Open
To support the Friends Group in securing external funding as appropriate	Work with Friends of Group to identify priorities for investment and secure external funding when and where possible	On-going	PE&OS / Friends Group	Open
To reduce ASB in the Pleasaunce	Monitor the anti-social behaviour and carry out preventative / remedial action and work with external agencies when required	On-going	PE&OS	Open
Preserve historical nature of East Greenwich Pleasaunce.	Monitor condition of the historical memorials within the site and perform works as appropriate	On-going	DRES / PE&OS	Open
As part of the Council's budget savings 24/25 – ensure leased properties within parks are charged for their water use.	Work with DRES to arrange for a water check meter to be installed in Cafe and start to invoice for water usage.	Short Term	PEOS / DRES	Open



<b>Recommendation:</b>	<b>Action:</b>	<b>Timescale: (Long/Medium /Short Term)</b>	<b>Action By</b>	<b>Status of Work:</b>
Refurbish the children's playground	Identify funding streams and make funding applications to refurbish the playground.	Medium Term	PEOS	Open
Increase biodiversity within the pleasaunce where possible	Identify ways to increase biodiversity within the Pleasaunce	Short Term	PE&OS	Open

**Important Note:** Improvement actions requiring investment are subject to funding being secured. There are no additional funds available from the Council unless it has been identified against a specific action. The previous Action Plans can be found in [Appendix VIII](#)

## **PART IV: HOW WILL WE KNOW WHEN WE'VE ARRIVED**

### **MONITORING AND REVIEW**

The East Greenwich Pleasaunce Management Plan will be fully reviewed and updated in 2030 by Parks Management Staff responsible for East Greenwich Pleasaunce.

A working document copy of the Management Plan will be kept within the parks office so that issues and changes that arise can be documented. The action plan will be reviewed as appropriate and updated accordingly.

## **APPENDIX I: References**

Ordnance Survey Map 1869 – Map 6

1873 “London District” Sheet 4 Geological Survey

1924 Ordnance Survey Map with Geological

Thomas Milne’s Land Use Map of London and Environs in 1800, London Topographical Society, 1975-6, Pub No. 118 & 119

EGP Leaflet produced by P&OS

Greenwich Unitary Development Plan Second Development Draft

The Royal Borough of Greenwich GIS

Friends of East Greenwich Pleasaunce Facebook page -

<https://www.facebook.com/EastGreenwichPleasaunce/>



## APPENDIX II: Legislation, policies and strategies affecting park management

As highlighted earlier in the plan, The Royal Borough of Greenwich's Parks, Estates & Open Spaces department operates within a wide framework of national, regional and local policy statements and strategies. The main documents impacting on the development of this plan are listed below.

### The Greenwich Strategy

The Greenwich Strategy sets out the vision for The Royal Borough of Greenwich as being the place to live, work, learn and visit. This vision underpins all of the strategies produced by The Royal Borough of Greenwich and directly impacts on all service plans and service delivery.

### The Cultural Strategy

Parks, Estates & Open Spaces is one of six 'areas' considered by the Cultural Strategy. The Strategy has five over-arching themes: - Equality and Access, Sustainability, the Cultural Economy, Achievement and Excellence and Partnerships. All of these aims are relevant to this management plan and have been considered in developing the opportunities and priorities for this site.

### Green Space Strategy

The Green Spaces Strategy sets out the Council's strategic intentions for its green assets and its vision of the positive contribution that Greenwich's open networks make to our lives.

The thematic objectives (community safety, biodiversity, education and culture, culture & events, tackling inequality, sport, health & well being) are all relevant to the management plan for East Greenwich Pleasaunce.

Theme	Action	Timescale
<b>Community Safety</b>	Ensure all notice boards carry emergency / incident telephone numbers	Ongoing
	Identify sites most challenged by anti-social behaviour	Ongoing
	Reduce reports of serious anti-social behaviour in parks and open spaces by 25%	Ongoing
	We will encourage good citizenship and reduce youth disorder by developing a programme of outreach and educational initiatives.	Short-term
	Enforce litter and dog fouling powers by increasing the number of officers trained to issue fines and we will publicise both successful convictions and penalty notices issued	Long-term
	We will engage in dialogue with the Police and Community Safety Unit to reduce crime, fear of crime and ASB within parks	Ongoing
<b>Biodiversity</b>	In conjunction with partners, we will monitor and evaluate our biological assets, and work with others towards the development of a Greenwich Biodiversity Action Plan	completed

	We will develop management plans for our green and open spaces that implement the provisions of the Biodiversity final Greenwich Biodiversity Action Plan, and in particular species action plans for the, Stag Beetle, Water Vole, Black Poplar, Bats, and the Skylark.	Ongoing
	We will work in partnership with local groups and the wider community to identify areas in need of protection and intervention to protect and conserve our natural and semi natural green and open spaces	Ongoing
	We will promote the value of our natural and semi-natural spaces to encourage understanding, enjoyment and responsible usage of the spaces	Ongoing
<b>Education and Culture</b>	We will review and evaluate the potentials for environmental education services to schools and colleges and by guided nature walks and green space based activities	Short-term
	We will develop potentials for developing good citizenship amongst children and young people through environmental education activities	Medium-term
	We will facilitate training and employment opportunities for young people in green space management and maintenance	Long-term
<b>Culture and Events</b>	We will seek to realise the potential of many of our parks and green spaces as cultural and historical places to visit in their own right through a programme of publicity, information and events	Long-term
	In partnership with both external voluntary and commercial users and operators, we will implement a programme of cultural events and activities in our parks and green spaces that may include (but not be confined to) drama, dance, music, youth culture and children's activities	Long-term
<b>Tackling Inequality</b>	We will promote activities and events in our parks and green spaces to celebrate the borough's rich diversity of people and interests.	Ongoing
	We will work to develop safe and inclusive access to all our green spaces to all cultures and communities.	Ongoing
	We will utilise the potential of allotments and community gardens to provide opportunities for horticultural and environmental knowledge and skills sharing between both cultures and generations	Medium-term
<b>Sport</b>	We will work to achieve the targets to be agreed for the Council's Sports Strategy (in preparation) for outdoor sports activities	Long-term
	We will develop management plans for green and open spaces that provide for casual sport and recreation opportunities identified by local communities	Medium-term

	We will review levels of equipped and unequipped play space provision, standards and opportunities for improvement in the development of an Outdoor Leisure Provision Strategy.	Medium-term
	We will provide quality safe play facilities that conform to National and European Standards and which meet local needs	Ongoing
<b>Health and Well being</b>	We will aim to improve the health of children and young people by offering quality opportunities for active recreation in our green spaces.	Ongoing
	We will promote the allotment service and improve uptake of under-used allotments and continue to research and seek opportunities to provide additional allotments in areas where demand exceeds supply	Ongoing
	We will use allotments and their community gardening potential as a multi-agency tool to achieve objectives in relation to both healthy living and social inclusion	Ongoing
<b>Inward Investment</b>	We will consult inclusively with local communities to identify local priorities for project funding	Long-term
	We will develop an investment strategy that identifies and prioritises sites and projects for development	Medium-term
	We will identify external sources of funding and sponsorship and submit a progression of external funding bids	Medium-term
<b>Performance &amp; Standards</b>	As a result of the Green Space Strategy we will develop detailed management plans for individual parks in partnership with local communities and users. The management plans will set priorities, as well as identify areas of potential.	Medium-term
	In addition to securing further Green Flag and Green Pendant Awards, local quality measures will be developed as part of management plans involving residents	Medium-term
	Develop additional "Friends of Parks" groups, ensuring full involvement of young people	Medium-term
	For smaller green spaces, adopt a direct community management approach with Council support	Medium-term

## Parks and Open Spaces Strategy

The 10 year Strategy, adopted in 2017 is centred on the following seven themes:

- **Park and open spaces management:** Ensuring our parks and open spaces are well managed, maintained in good condition and are safe to use;
- **Community engagement:** Ensuring we actively engage and work in partnership with local residents to provide good quality parks that meet the needs of the local community;
- **Nature and biodiversity:** Ensuring that areas and habitats are provided for wildlife and that they are protected from inappropriate development;



- **Environmental management:** Maximise resource efficiency by increasing recycling opportunities, establish better use of essential energy sources and controlling the use of pesticides and chemicals;
- **Recreation, health and wellbeing:** Ensuring that parks provide spaces for active recreation and quiet reflection and contribute to the health and well-being of the local community;
- **Regeneration and local economy:** Ensuring our parks are well designed, attractive to visitors and encourage enterprise and employment of local people; and
- **Culture and heritage:** Ensuring our parks are places for culture and that their heritage is preserved and celebrated.

### **Annual Service Plan**

The Parks, Estates & Open Spaces department aims to develop, manage, ensure accessibility and maintain to a high standard The Royal Borough's Parks, Open Spaces, Woodlands, Tree Stock, Cemeteries, Playgrounds, Sports Pitches, Allotments and other outdoor facilities. To meet the needs of the community and deliver The Royal Borough's core objectives where applicable to the service, and specifically regarding the provision of a clean and well cared for environment and supporting Health and Quality of Life for the local community.

### **ISO 9001:2015– Quality Management System**

The Parks, Estates & Open Spaces arboricultural services is accredited to the ISO 9001:2015. The ISO 9001 Quality Management System is used by the Royal Borough to manage their activities and resources to guarantee a quality service. The ISO 9001 helps the Royal Borough achieve customer satisfaction because it provides a framework for service analysis and definition and for the improvement of processes. The four main parts covered under the Quality Management System are (i) management responsibility (ii) resource management (iii) process management and (iv) measurement, analysis and improvement.

### **ISO 14001:2015 – Environmental Management System**

The Parks, Estates & Open Spaces horticultural and arboricultural services are managed in conjunction with an Environmental Management System that is accredited to the internationally respected EN ISO 14001:2015 Environmental Standard. The Royal Borough's grounds maintenance and tree maintenance activities are controlled to ensure the service is delivered in an environmentally sustainable manner and to reduce any negative effects on the environment that may be their operations. Parks, Estates & Open Spaces works towards sustainable development and continual environmental improvements.

### **ISO 45001:2018 – Health, Safety & Wellbeing Management System**

The Parks, Estates & Open Spaces arboricultural services is accredited to the ISO 45001:2018 which provides a framework for managing Occupation Health & Safety risks and opportunities. The aim is to prevent work related injury and ill health to workers and to provide safe, healthier workplaces by eliminating hazards minimizing risks by taking effective preventative and protective measures. The intended outcomes of the Health, Safety and Wellbeing Management System include (i) continual improvement of performance, (ii) fulfilment of legal and other requirements and (iii) achievement of Health & safety objectives.

### **Core Strategy**

Local Councils have a duty to prepare a Core Strategy by law. The Greenwich Core Strategy (CS) sets out the vision for use of the land in the Royal Borough, and provides the main guidance for making decisions on individual planning proposals. The document is intended to cover the period 2013 – 2028. It is a legal document with the following purposes:-

- To provide a framework of acceptable uses within the Royal Borough, defining areas where development is not desired or where it needs to be carefully directed and;
- To provide a detailed basis for the control and development

The CS may be viewed at the Directorate of Place & Growth, Planning Department, The Woolwich Centre, 35 Wellington Street Woolwich, SE18 6HQ, via The Royal Borough of Greenwich's website, or alternatively at a local library or online.

The Core Strategy designates East Greenwich Pleasaunce under the following policies

- Community Open Space OSI, OS(b)

For more details on each designation, please consult the full version of the CS via any of the venues described above using the references next to each designation.

### **The Biodiversity Action Plan**

The Greenwich Biodiversity Action Plan is the first co-ordinated approach to conserving Greenwich's biodiversity. The aim of the plan is:

'To ensure the conservation, enhancement and public appreciation of the biodiversity of the London Borough of Greenwich'.

The Biodiversity Action Plan focuses on locally important habitats and species and has actions drafted to ensure that they cover all relevant habitats and species. Initially actions may be focused on those under the most pressure or where most advantage can be gained. However, it allows for all important habitats and species to be covered.

The Biodiversity Action Plan has been developed in partnership with local and regional groups and organisations.

### **Health and Safety**

Staff are able to access certain Health and Safety information via a 'Red Folder'. 'Red Folders' are located at every depot where staff are based. The contents of the Red Folders include a list of first aiders, list of PA1 PA6A certificate holders, COSHH assessments, Risk Assessments, and the Environmental Management System Manual.

The contents of this red folder are reviewed on a regular basis, and any additional assessments are added as required. COSHH / risk assessments are carried out by trained staff on all new substances / new work practices before use.

All machinery operated by The Royal Borough of Greenwich undergoes regular maintenance by The Royal Borough's Fleet Management Service. In addition to this, staff carry out routine checks on all machinery before use. If problems are detected, the machinery is then booked for service by the Fleet Management Unit.

Parks, Estates and Open Spaces are continuously reviewing the market for energy efficient machinery. Where practical, battery operated hedge cutters are now used and the tree maintenance unit is looking to trial battery operated chain-saws, pole saws and blowers. The vehicles used by the Parks, Estates and Open Spaces department are also maintained by The Royal Borough's Fleet Management Service. The Borough is accredited to the Fleet Operator Recognition Scheme (FORS). FORS is a voluntary accreditation scheme for fleet operators which aim to raise the level of quality within fleet operations, and to demonstrate which operators are achieving exemplary levels of best practice in safety, efficiency, and environmental protection.

### **Legislation**

The Parks, Estates & Open Spaces department operates within the frameworks set out by the following legislation, and therefore, the legislation may impact upon the delivery of service of the Parks and Open Spaces department both financially, through planning and human resources. This is not a comprehensive list but is indicative of key pieces of legislation relating to PE&OS.

Alcohol Consumption in Public Places Order 2003  
Clean Neighborhoods Act 2005  
Food & Environment Protection Act  
The Countryside Code (updated 2012)  
The Waste (England & Wales) Regulations 2011  
Countryside & Right of Way Act 2000  
Disability Discrimination Act 1998  
Health & Safety at Work Act 1974  
Litter Act 1983  
Ministry of Housing and Local Government Provisional Order Confirmation  
(Greater London Parks & Open Spaces Act )1967  
Occupiers Liability Act 1957  
Road Traffic Act 1988 (as amended 1991)  
The Anti-Social Behavior Act 2003  
The National Parks & Access to the Countryside Act 1949  
The Natural Environment and Rural Communities Act 2006  
The Weeds Act 1959  
The Wildlife & Countryside Act 1981

In addition there are numerous bye-laws that relate to specific parks.



## **Policy Statements**

### **EAST GREENWICH PLEAUNCE APPROPRIATE USE POLICY**

#### **Purpose**

To explain and clarify the Parks Service position on appropriate behaviour within the Pleasaunce and to promote the importance of the Pleasaunce as a better visited, more vital site which delivers great heritage, social environmental and recreational benefits for future generations.

#### **Key Issues / Policy**

##### **Passive Recreation**

Activities such as walking, relaxing, reading, photography, drawings, are all encouraged and considered appropriate ways to enjoy the environment of the Pleasaunce. Any activity that disturb the tranquillity of the site or are not in keeping with the presentation of the site will be prohibited. This will include such things as nude sunbathing, the consumption of alcohol taking drugs, playing loud music or large ball games etc.

##### **Events**

The Parks Service is committed to increasing the use of the site and people's understanding of various aspects of the site through various events and outreach activities. Events and activities should have relevance to the site and be in keeping with the aims of the authority. They should not in any way damage or alter the nature of the site long term. Events and activities will always be carefully planned and sufficiently staffed. A health and safety assessment will be carried out before every event and all activities will be preceded by an introduction outlining health and safety issues and the importance of appropriate behaviour.

##### **Dogs**

Dogs are permitted in the Pleasaunce but owners are encouraged to keep them on a leash. Dogs are not permitted within the fenced no dog area which includes the playgrounds, in order to provide a safe area for children to play.

##### **Access**

An annual rota of opening and closing times has been drawn up by the Parks Service. This rota is advertised and available to members of the public upon request. If in the future, community groups become increasingly involved in the management of the site, they may need keys to gain access outside normal hours. In these circumstances, community groups will normally be required to give 24 hours notice of their intention to be on site outside normal hours. A list of key holders is held by Parks Services. Vehicle access to the Pleasaunce is by prior arrangement with the Parks Services. Authorised vehicles must use established paths only.

##### **Vandalism**

Acts of vandalism are to be treated as serious and the police should be called in situations where they have been witnessed or have been found after the incident.

##### **Anti-Social Behaviour**

People acting in an anti-social manner will be asked to stop that behaviour and/or asked to leave the site.

### Criminal Activity

Breaches of Park Bylaws will be enforced by the Parks Service. Any other criminal activities witnessed will be referred to the Metropolitan Police for further action.

### Removal of Vegetation

Removal of any vegetation except by authorised maintenance works carried out by authorised personnel is prohibited.

### The Role of the Parks Service in Promoting Appropriate Behaviour within the site

On site, Parks' staff are the front line contact with people that visit and use the Pleasaunce. They are responsible for building up good relationships with visitors to the site and are in a position to give information, advise and help where needed. There are a number of bylaws which cover the Pleasaunce in addition to a number of policies which are required to be enforced. During enforcement of bylaws and policies, staff must protect their own safety and make a judgement as to how far they should go in asking people to refrain from certain activities or adhere to policies. All visitors will be asked to adhere to bylaws and policies. Police support will be requested when appropriate.

### Conclusions

East Greenwich Pleasaunce is a complex site that is cherished by a number of local groups. The heritage of the site must be promoted further to the wider community so that its potential value is fully realised. Several of the assets of the sites are vulnerable and policies have been developed in addition to existing bylaws with the aim of protecting the site as well as its visitors. This involves allowing the greatest number of visitors to the site without causing damage to the site or offence to other users. The safety, security and protection of the site and visitors will influence all existing and future policies.

## Use of Peat / Peat Based Product Policy

### **Parks and Open Spaces**

### **Communities &**

### **Environment The Royal**

### **Borough of Greenwich**

#### **(Authorised by the Parks, Estates & Open Spaces**

#### **Management) Background:**

Peat is a Heterogeneous mixture of decomposed plant material (humus) that has accumulated in a water-saturated environment and in the absence of oxygen.

Peat lands play an important role in the biosphere. They affect hydrological dynamics and water quality and provide important habitats for plant and animal species.

The extraction of peat for mans use has a major negative environmental impact in the long term.

In recent decades peat has been dug in vast quantities for use by the plant nursery industry and horticulture.

Peat has particular calculable water conductive properties. Plant production in the UK is somewhat organised to use peat as an alternative to mineral soils because of its consistent qualities and PH level.

It is a non- sustainable product

#### **Our Policy:**

- In Parks and Open Spaces we do not use peat as a soil ameliorant or mulch.
- We do not use peat or peat based product in relation to tree or shrub planting
- We encourage our suppliers to use products other than peat in the growing of trees, shrubs and bedding plants
- We train our staff in the rationale of not using peat based products

#### **Parks, Estates & Open Spaces**

Oxleas Woods Centre

Crown Woods Lane

London

London SE18 3JA

# Pesticide Policy

**Parks, Estates & Open  
Spaces Communities &  
Environment The Royal  
Borough of Greenwich**

**(Authorised by the Parks, Estates & Open Spaces Management)**

As part of a continual move towards better environmental practice, we aim to minimise the use of pesticide where possible and to promote the use of alternative maintenance and curative procedures in relation to Parks, Estates & Open Spaces sites.

We aim to:-

- Eliminate the hazards of pesticides
- Reduce the dependence of pesticides
- Promote alternatives to pesticides
- Communicate good practice through membership to PAN (Pesticide Action Network).

Objectives:-

- Control the problem of worm casting, without the use of lumbricides
- To limit the use of selective herbicide to the ornamental areas only
- To not use on insecticides
- To limit the use of fungicides to the Bowling Greens
- To use organic fertilisers.





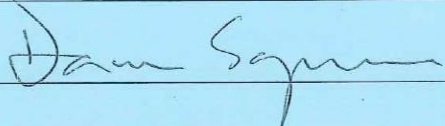
## 4.2 Environmental Policy

The Royal Borough of Greenwich recognises that environmental issues are of fundamental importance to our customers, and to our business success.

The Royal Borough of Greenwich aims to work towards the achievement of sustainable development and continual improvement.

Under the scope of its Environmental Management Systems, The Royal Borough of Greenwich strives to:

- Promote sustainability and the use of sustainable resources
- Promote conservation and environmental awareness
- Promote activities which enhance the environment
- Achieve continual improvements in environmental performance
- Prevent the release of pollution
- Minimise the release of waste, noise and emissions
- Minimise activities which have a negative effect on the environment
- Maximise activities which have a positive effect on the environment
- Comply with applicable legal and other requirements that relate to environmental aspects
- Work in partnership with other organisations in environmental management
- Set environmental targets built into the day to day running of the service
- Use products which have a minimum impact on the environment
- Provide training in environmental issues to all persons
- Communicate the Environmental Policy to all persons working for or on behalf of The Royal Borough of Greenwich
- Review Environmental objectives, targets and policy

Signed		Head of Parks & Open Spaces
--------	---	-----------------------------

Issue 09

Issue Date: 10/04/13

Ref: LC.EMS.P&OS

Page 6 of 40

### **Parks, Estates & Open Spaces COSHH Statement**

Parks, Estates & Open Spaces are committed to ensuring safe working practices and to minimising the negative effects on the environment from our activities.

Control of Substances Hazardous to Health within Parks, Estates & Open Spaces is through implementation of risk assessments on all substances where exposure could lead to an adverse effect on health or danger to safety, and the introduction of appropriate control measures.

COSHH assessments are undertaken by a trained member of staff and are reviewed annually

Written records are kept demonstrating that risks have been considered

Control measures highlighted in the assessment are implemented and maintained

Parks, Estates & Open Spaces employees only use products in conjunction with a COSHH assessment

Health surveillance is used to evaluate effectiveness of control measures

An up to date inventory is kept of all hazardous substances to which staff are likely to be exposed to during their work activities

No other products may be brought into use without prior Management Review product approval

Parks and Open Spaces Environmental Policy also sets guidelines for the use of substances hazardous to health

## APPENDIX III: East Greenwich Pleasaunce History

### Brief summary

The site of East Greenwich Pleasaunce was originally farming land, the first mention of which can be found in the Domesday Book of 1086, where it is mentioned as part of the Manor of Dartford was under the jurisdiction of Arnold de Mandeville, who received 9s 2d per year rent for the “Lands of Combe West”.

The Manor eventually became the property of Henry II, then in 1260, Sir William De Fortibus, Earl of Albmarle and Lord of the Manor, rented Westcombe for £6 per year. Eventually the Estate passed to Sir Gregory Page Turner.

Then, in 1857, the Greenwich Hospital purchased the land from the estate of Sir Gregory Page Turner to use as a cemetery at ‘£550 per acre exclusive of the interest of Mr William Miles, the Yearly Tenant of the Land’ (who used it primarily as an orchard of fruit trees).

The Pleasaunce was bought by the hospital, as the two previous burial and internment areas used by the hospital had become full, and poor burial practices meant that there was public health risk if those practices were continued.

The Greenwich Hospital was originally founded in 1694 on the site of the royal palace at Greenwich by a Royal Charter of King William and Queen Mary, and was originally known as the Royal Naval Hospital. Its founding aims were: -

“the relief and support of Seamen...belonging to the Navy Royall...who by reason of Age, Wounds or other disabilities shall be incapable for further service...And for the Sustentation of Widows and the Maintenance and Education of the Children of Seamen happening to be slain or disabled. Also for the further relief and Encouragement of Seamen and Improvement of Navigation”.

From 1705 the hospital buildings, completed by 1751, were occupied by Greenwich Naval Pensioners. Numbers of pensioners reached 2,710 by 1814 so even at this stage the Hospital had a large staff, headed by an Admiral, with its own bakery, brewery, infirmary wards and mausoleum. All the pensioners were provided with uniforms and tobacco money and those that could, undertook duties for which they were paid.

The conditions that the pensioners lived in were spartan however, and despite improvements in the mid 1800s, the number of in-pensioners declined, as more of them chose to live out and receive pensions. The Hospital closed as a seamen's home in 1869 but soon found a new role as home to the Royal Naval College.

Although the hospital closed as a seamen's home in 1869, burials within the Pleasaunce continued to be restricted to naval pensioners from the hospital, hospital staff and Navy officers. This being the case, many of the burials within the Pleasaunce were veterans of the battle of Trafalgar and the Crimean war. More recent burials include naval personnel from the first and second world war. Within the Pleasaunce, side by side, ex-seaman rest in peace with Rear admirals, Petty Officers with civilian instructors, and naval surgeons with schoolmasters.

The central area of the park was fenced off with an iron rail, and this area was used to inter officers.

Historically, there was a rail installed around the naval officer's burial area, this was removed during World War Two for recycling for the war effort. In 1875, 3000 bodies were moved from the previous burial ground to the Pleasaunce during the construction of a new dining hall for the Royal Hospital School and the construction of a railway tunnel for the Greenwich – East Coast line. These bodies are commemorated by a marble plaque, set into the wall directly opposite where they were interred. The plaque reads “Opposite this tablet lie interned 3,000 men, formerly pensioners of the Royal Hospital, removed from the Infirmary Burial Ground in 1875.”

In 1925, during the extension of Devonport House (previously used as a home for orphans and sons of poor seamen, used after the extension as a nurses home), 1,247 skulls and 58 boxes of bones were removed from the site (which had been the previous burial ground), then reinterred in the Pleasaunce.

In 1926, East Greenwich Pleasaunce was sold to The Royal Borough of Greenwich for £450 as a public park and arboretum – an area for relaxation and reflection for the people of Greenwich, under the condition that the Admiralty would have the right to use the Pleasaunce as a burial site “in perpetuity”.

In February 1977, Greenwich's third One O' clock Club opened at East Greenwich Pleasaunce. One O' Clock Clubs were designed to provide a social afternoon for children under school age, as well as their parents or carers.

The last burial in East Greenwich Pleasaunce took place in 1981. Recent developments by The Royal Borough are;

In 200, The Royal Borough of Greenwich moved the children's playground to its new location.

In 2005, a new memorial section was created consisting of a large bench and paved area. Shrubs and birch trees were planted adjacent to the area where the 1875 re-internment took place.

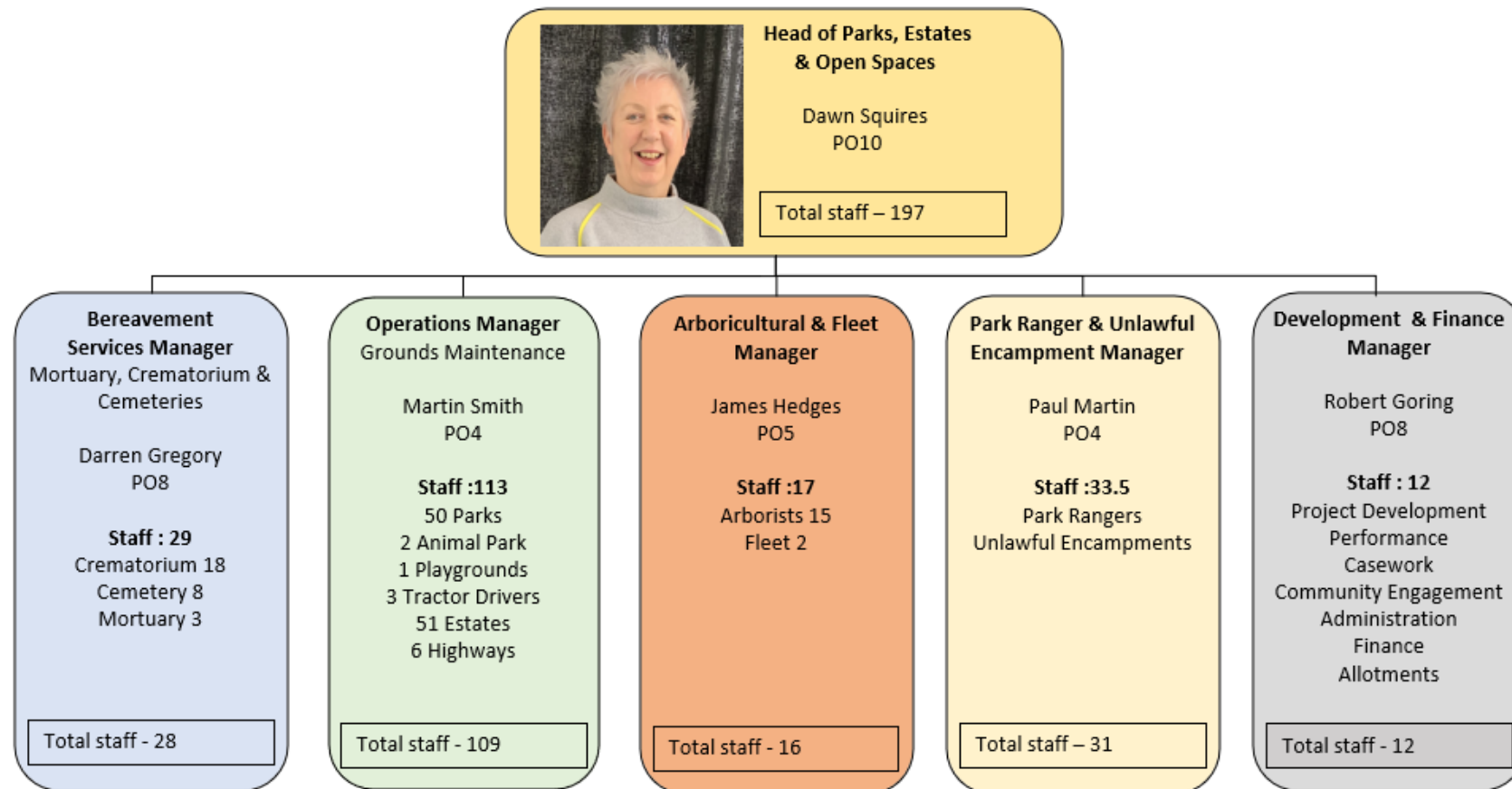
In 2006, a section in the north east of the park was fenced off to create a dog free area (incorporating the children's playground) and The Friends of East Greenwich Pleasaunce was established and had a membership of 224 in its first year.

In 2009, a new Environmentally sustainable café building was built in the northern section of the park. This building also provide public toilets for the park.

Additional history can be found on the website of the Friends of East Greenwich Pleasaunce - <https://fegpdotorgl.wordpress.com/>



## APPENDIX IV: Parks and Open Spaces Management Structure Chart – 2024/25



**APPENDIX V: Annual Maintenance Model – 2021/22**

<b>F07M EAST GREENWICH PLEAUNCE (inc one o'clock club)</b>													
line	Description	JAN	FEB	MAR	APR	MAY	JUN	JUL	AUG	SEP	OCT	NOV	DEC
1	spray all hard standing areas & weedkill channels				1								
2	edging half moon		1										
3	pedestrian grass mowing			2	2	3	3	3	2	2	2	1	
4	hedge cutting (inc laurel with secateurs)					1		1		1			
5	hedge base maint	1		1		1		1		1		1	
6	brushcutting & obstacles			1	1	1	1	1	1	1	1	1	
7	leaf clearance	1										1	1
8	deadhead roses					1		1		1			
9	rose bed maint			1		1		1		1			
10	rose bed maint	1										1	
11	pruning of roses			1									
12	rose bed pruning											1	
13	shrub bed maint			1		1		1		1			
14	shrub bed maint	1										1	
15	sweeping park	5	2	2	3	2	2	2	2	2	4	5	4
16	tree topiary (TREE GANG)							1					
17	tree feathering, stake/tie & base weeding			1				1					
18	tree line weeding	1		1		1		1		1		1	
<b>DISTRICT 1 MINI-TRIPLE MOWING SITES</b>													
line	Site	JAN	FEB	MAR	APR	MAY	JUN	JUL	AUG	SEP	OCT	NOV	DEC
MT23	F07M EAST GREENWICH PLEAUNCE			2	2	3	3	3	2	2	2	1	

## APPENDIX VI: Examples of Event leaflets



**10<sup>th</sup> Anniversary PARKSfest 2018**

**The Friends of East Greenwich Pleasaunce PRESENTS**

**THE PLEASAUNCE SUMMER FESTIVAL**

Entrances in Chevening and Halstow Road  
SE10 0LB

**Sunday 10th June 12noon – 5pm**

**A FREE afternoon with a variety of Live Music**

**Art Exhibition, Sports Programme, Family Circus**

**Children's Entertainment, Dog Show**

**bar and refreshments, or bring a picnic**

**SPONSORED BY**

**www.fegp.org**  
**www.parksfest.org**

**TUDOR BARN** **ROYAL GREENWICH FESTIVALS** **ROYAL BOROUGH OF GREENWICH**

**BROWN & BROOKE SE3**



**ANNUAL EASTER EGG HUNT**

**FOR UNDER- AND OVER-FIVES**

**plus other fun activities!**

**Sunday 20th March 2016**

**The Bridge**

**East Greenwich Pleasaunce**

**1-4pm**

**BROWN & BROOKE SE3 FOR SALE**

**TESCO** £2 per child **Iceland**

**Mot2 CHILD CARE**

**www.thebridgegreenwich.co.uk**

**APPENDIX VII: 2013/18 ACTION PLAN**

Key

	Action to be taken during the years indicated (resources permitting)
	Actions ongoing during the years identified

Item	Actions	2013	2014	2015	2016	2017	2018	Action By:
Signage	Install additional directional signage from the nearby main Woolwich Road		Completed					PE&OS
	Signposts from Woolwich Rd and Westcombe Park Station to advertise the park, café and The Bridge.		Completed					PE&OS
Pathways	Improve pathways within the pathways (applying for Section 106 Funding and other funding for this project)			Completed				PE&OS
	Refurbish existing path from Halstow Road to the Café. And install gravel terrace area in front of park café.		Completed					PE&OS
Fences, benches and litter bins	Repaint / replace (non-playground) items with similar design and colour							PE&OS
Refurbish former gardeners shed	Obtain funding (Playground to Podium) to refurbish former storage building for storage of FoG equipment.	Completed						PE&OS
Biodiversity	Install Bird Boxes in association with the friends group	Completed						PE&OS



Item	Actions	2013	2014	2015	2016	2017	2018	Action By:
Grave Furniture	Ensure that fallen headstones / monuments are either removed from site, or are repositioned to ensure safety							PE&OS
Management Plan	Review / amend Management Plan where appropriate. Seeking input from Friends of Group / other stakeholders							PE&OS
Ecology of the park	Carry out an assessment of the current ecology of site							PE&OS
	Increase mulching within the site using recycled materials							PE&OS
	Carry out arboricultural survey in the park	Completed						PE&OS
	Work in conjunction with City Orchards (Charitable Organisation) and FOG to organise work days to maintain the orchards							PE&OS
Lighting	Install lighting throughout the park and around the perimeter pathway from Halstow Road to Chevening Road (Playground to Podium Funding)	Completed						PE&OS
Preserve historical artefacts in the Pleasaunce	Install signage to help preserve historical artefacts (e.g. gravestones)	Completed						PE&OS
	Promote historical significance (e.g. website, in marketing literature, interpretation signage etc)							PE&OS

Item	Actions	2013	2014	2015	2016	2017	2018	Action By:
To secure Inward Investment as appropriate	Work with Friends of Group to identify investment priorities and secure external funding where possible							PE&OS
Marketing	Investigate ways of improving marketing of site (through use of different mediums etc) and through improvements to current marketing							PE&OS
	Review how site is currently marketed, review and improve website							PE&OS
Playground	Upgrade the playground facilities (applying for Section 106 Funding for this project)		Completed					PE&OS
To achieve a recognised standard	Continue to retain the Green Flag Award (Ongoing after initial application)							PE&OS
Assist in creating a living tunnel	Working with The Bridge to create a living tunnel in the shrubbery of their playground by cladding a metal framework with willow.				Completed			PE&OS

**Important Note:** Improvement actions requiring investment are subject to funding being secured. There are no additional funds available from the Council unless it has been identified against a specific action.

**APPENDIX VII: 2019/24 ACTION PLAN**

Key

	Action to be taken during the years indicated (resources permitting)
	Actions ongoing during the years identified

Item	Actions	2019	2020	2021	2022	2023	2024	Action By:
Fences, benches and litter bins	Repaint / replace (non-playground) items with similar design and colour							PE&OS
Grave Furniture	Ensure that fallen headstones / monuments are either removed from site, or are repositioned to ensure safety							PE&OS
Management Plan	Review / amend Management Plan where appropriate. Seeking input from Friends of Group / other stakeholders							PE&OS
Ecology of the park	Carry out an assessment of the current ecology of site							PE&OS
	Increase mulching within the site using recycled materials							PE&OS
	Carry out an arboricultural survey in the park							PE&OS

	Work in conjunction with City Orchards (Charitable Organisation) and FOG to organise work days to maintain the orchards								PE&OS
To secure Inward Investment as appropriate	Work with Friends of Group to identify investment priorities and secure external funding where possible								PE&OS
To achieve a recognised standard	Continue to retain the Green Flag Award (Ongoing after initial application)								PE&OS
Create additional dog free area	To create a fenced off area near the café that is a designated dog free zone as per the friends wishes.								PE&OS
Install drink fountain	To work with the friends group in their wish for a water drinking fountain to be installed in the Pleasaunce								PE&OS
Survey buildings	To undertake conditional and asbestos surveys of the buildings within the pleasaunce								DRES
Update signage	To review and update signage in the pleasaunce								PE&OS

**Important Note:** Improvement actions requiring investment are subject to funding being secured. There are no additional funds available from the Council unless it has been identified against a specific action