

**Safer Greenwich Partnership  
Community Safety Strategy  
2017 to 2020**

# FOREWORD

The Safer Greenwich Partnership is committed to making Royal Greenwich a safe place for all who live, work, study and visit here.

We recognise that no agency can achieve this vision on its own and that it's only by using our collective powers and resources we can ensure that: our public spaces that are clean and safe, vulnerable and repeat victims are protected and people are able to live, work and learn in an environment free from crime or anti-social behaviour.

In order to help us deliver these important outcomes, this strategy sets out our priorities for the next three years, the structures in place to ensure effective partnership working and how we will monitor our progress.

Cllr Jackie Smith  
Cabinet Member for  
Community Safety & Environment  
Royal Borough of Greenwich

Chief Superintendent Simon Dobinson  
Borough Commander  
Metropolitan Police Service

Co-Chairs of the Safer Greenwich Partnership

# ABOUT THE SAFER GREENWICH PARTNERSHIP

## TERMS OF REFERENCE

The Safer Greenwich Partnership is the Community Safety Partnership for Royal Greenwich and exists to provide strategic direction and partnership co-ordination of activity to reduce crime and anti-social behaviour in the Borough.

This includes:

- Agreeing the three-year Community Safety Strategy.
- Overseeing the production of an annual Strategic Intelligence Assessment and using it to review the partnership's priorities.
- Agreeing annual Community Safety Plans, setting out partnership activity to deliver progress on the priorities in the Community Safety Strategy.
- Ensuring that all members are aware of the implications of any new/amended legislation or policies at a local, regional or national level and agreeing any necessary actions to meet new requirements.
- Commissioning strategies that set priorities and co-ordinating partnership work in areas under the partnership's remit.
- Maintaining an oversight of available funding streams and co-ordinating any partnership bids for such funding. If bids are successful, regularly monitoring progress and performance against agreed milestones and outcomes.
- Facilitating the effective use of the appropriate partnership resources as required.
- Monitoring performance against action and performance measures set out in the Community Safety Plan and other relevant action plans or initiatives. Where performance is of concern, commissioning further in-depth analysis/review and agreeing actions for improvement.

# MEMBERSHIP AGENCIES

## JOINT CHAIRS

- Borough Commander, Metropolitan Police Service
- Cabinet Member for Community Safety & Environment, Royal Borough of Greenwich

## STATUTORY PARTNERS

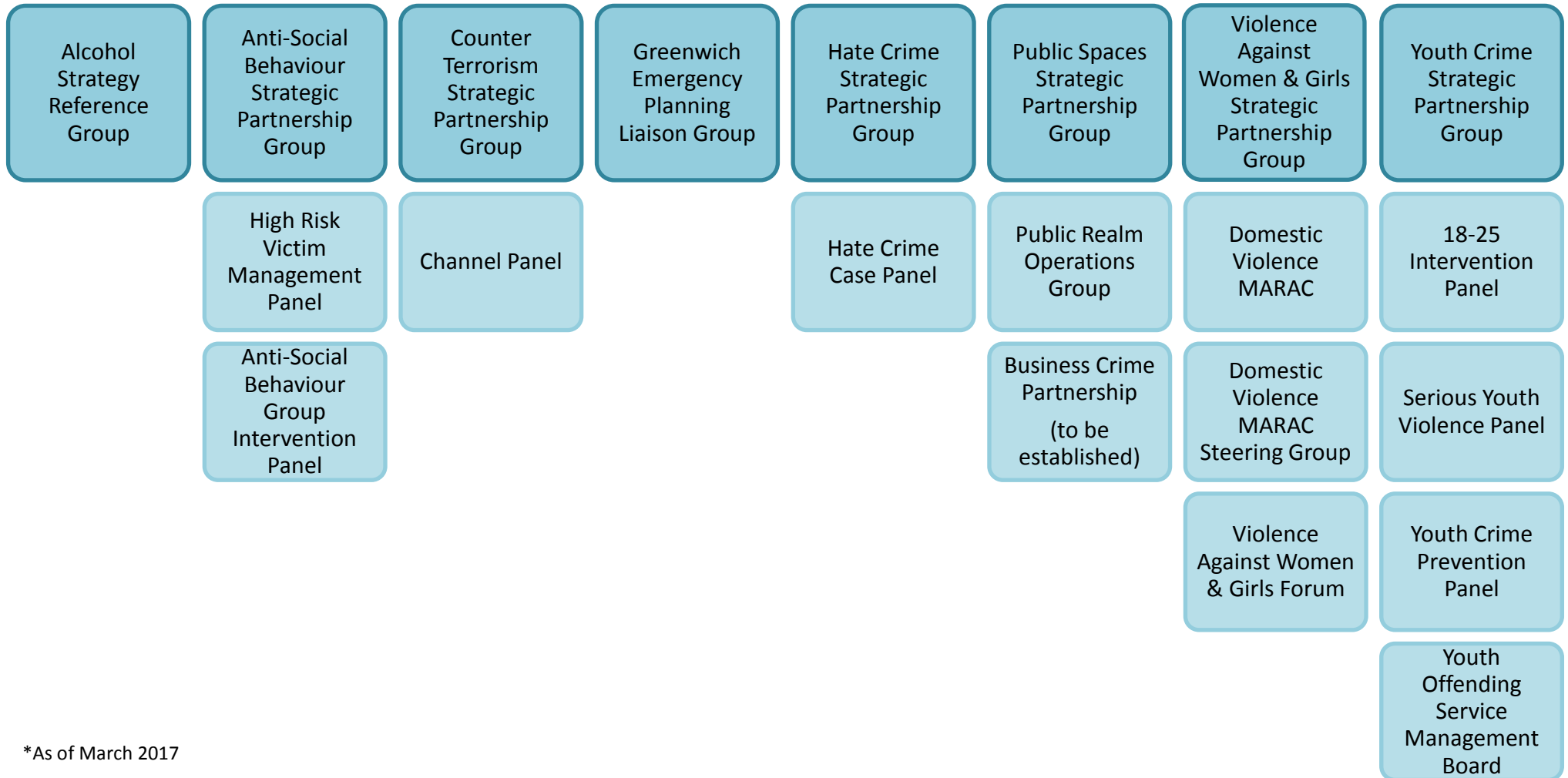
- London Community Rehabilitation Company
- London Fire Brigade
- Metropolitan Police Service
- National Probation Service
- NHS Greenwich Clinical Commissioning Group
- Royal Borough of Greenwich

## NON STATUTORY PARTNERS

- Greater London Authority
- Greenwich Safeguarding Children Board
- Greenwich Safer Neighbourhoods Board
- HMP Belmarsh
- HMP YOI Isis
- HMP Thameside
- London Ambulance NHS Trust
- Mayor's Office for Policing & Crime
- Oxleas NHS Foundation Trust
- Victim Support London
- Woolwich Barracks

# MEETING STRUCTURE & ACCOUNTABILITIES

## Safer Greenwich Partnership



\*As of March 2017

## **OUR PRIORITIES 2017/18**

**Countering the Threat of Terrorism  
and Extremism**

**Creating and Sustaining Safer Public  
Spaces**

**Tackling Hate Crime and Supporting  
the Vulnerable and Repeat Victims**

**Ending Violence Against Women and  
Girls**

**Preventing and Reducing the Harm  
from Youth Violence and Gangs**

**Reducing the Harm that Alcohol  
Causes**

## **HOW WE CHOSE OUR PRIORITIES**

Each year a Strategic Intelligence Assessment is carried out in order to gain a clear understanding of the community safety issues for Royal Greenwich and enable the Safer Greenwich Partnership to review its priorities and ensure that they are still relevant. The Strategic Intelligence Assessment uses data on the volume and trends of different types of crime and ASB over the previous twelve months. It also draws on the findings of in-depth pieces of analysis that have been carried out into specific areas of concern, in order to gain a fuller understanding of complex issues.

The Safer Greenwich Partnership uses the information in the Strategic Intelligence Assessment to review and choose its priorities for the year. The priorities are chosen because they are areas with scope for further strategic/operational development (e.g. to meet changing needs, emerging issues, new legislation or national policy developments) and they require a partnership approach. The Safer Greenwich Partnership also takes into consideration the priorities from the Greenwich Strategy and the London Police and Crime Plan.

## **NEXT STEPS**

In order to take forward the priorities within this Strategy, an annual Community Safety Plan is developed. This plan contains a number of actions to ensure that we deliver against our priorities and measures for us to monitor performance. These plans are reviewed on a quarterly basis by the Strategic Partnership Groups that sit under the Safer Greenwich Partnership. If there are any concerns about performance, which they are unable to address, they will raise to the Safer Greenwich Partnership.

An annual review of crime and anti-social behaviour is carried out each financial year. This, alongside a review of performance against the outcomes for this strategy and the Community Safety Plan is discussed by the Safer Greenwich Partnership.

# KEY OUTCOMES

Reduce the total number of victims of crime, especially high harm crimes

Reduce the number of young victims of crime

Improve public confidence in the police and improve victims' satisfaction with the service they receive

Encourage more victims of domestic abuse to report and reduce the number of repeat victims

Encourage more victims of hate crime to report and reduce the number of repeat victims



# MEETING THE LONDON POLICE & CRIME PLAN PRIORITIES

## **A Better Police Service for London**

We will look to meet this priority by:

- Ensuring that local police and staff across agencies work together to tackle local crime & ASB issues.
- Developing effective partnerships with businesses in our town centres.

## **A Better Criminal Justice Service for London**

We will look to meet this priority by:

- Improving local services in order to provide holistic and joined-up support to victims.
- Supporting the prisons in the borough in implementing the proposed reforms to the service.

## **Keeping Children & Young People Safe**

We will look to meet this priority by:

- Developing a new Gangs and Serious Youth Violence Strategy.
- Working with Safeguarding Children Board to identify/support the most vulnerable young people.

## **Tackling Violence Against Women & Girls**

We will look to meet this priority by:

- Continuing to work towards the priorities in our VAWG Strategy, reviewing this in 2018.
- Reviewing the barriers to reporting VAWG and working with local communities to overcome them.

## **Standing Together Against Extremism, Hatred & Intolerance**

We will look to meet this priority by:

- Continuing to work towards the priorities in our Hate Crime Strategy, reviewing this in 2019.
- Working with schools and community groups to safeguard those at risk of radicalisation.

# MEETING THE GREENWICH STRATEGY OBJECTIVES

## PLACE TO LIVE

**We will help to achieve this objective by:**

- Ensuring that victims of Domestic Abuse and Hate Crimes feel confident to report and receive the support that they want.
- Empowering local communities to work with us to create neighbourhoods free from crime and anti-social behaviour.

## PLACE TO WORK

**We will help to achieve this objective by:**

- Enabling businesses to work with us to ensure a safe environment for staff and customers.
- Working with transport providers to enable people to travel to, and around, the borough safely.

## PLACE TO LEARN

**We will help to achieve this objective by:**

- Supporting schools and young people to create a learning environment that is free from hate crime and intolerance.
- Working with schools to support our young people in developing healthy relationships and making the right choices.

## PLACE TO VISIT

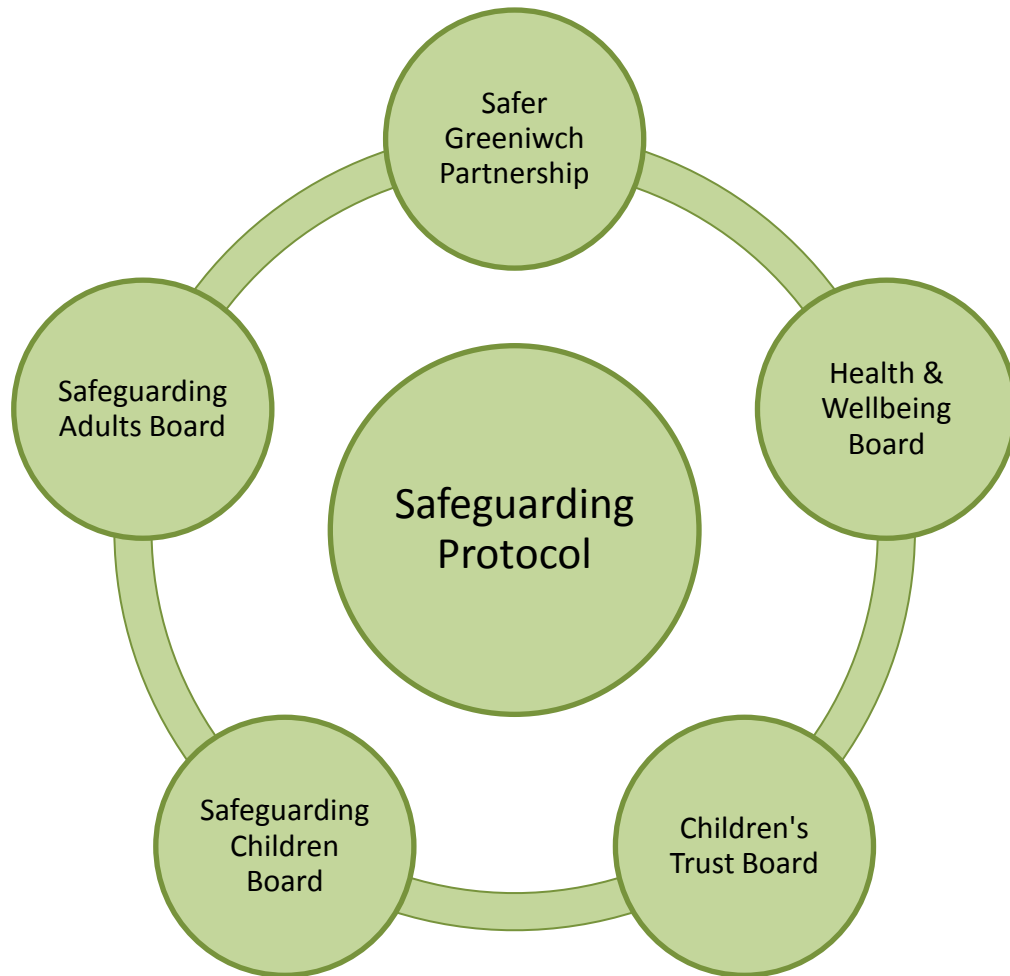
**We will help to achieve this objective by:**

- Creating public spaces where people feel safe.
- Working with licensed premises to support and promote a healthy and safe night time economy.

# OTHER ROYAL GREENWICH COMMUNITY SAFETY STRATEGIES



# WORKING WITH OTHER PARTNERSHIPS ON SAFEGUARDING



## KEY PRINCIPLES

- Commitment to working together to shared aims.
- Respect for each partnership's roles, responsibilities and work within the agreed protocol.
- Culture of mutual challenge and professional accountability.
- Effective interface and regular communication.
- Safeguarding is everybody's responsibility.

**For Further Information Contact**

Safer Communities Team

Royal Borough of Greenwich

 [community-safety@royalgreenwich.gov.uk](mailto:community-safety@royalgreenwich.gov.uk)

 020 8921 8396