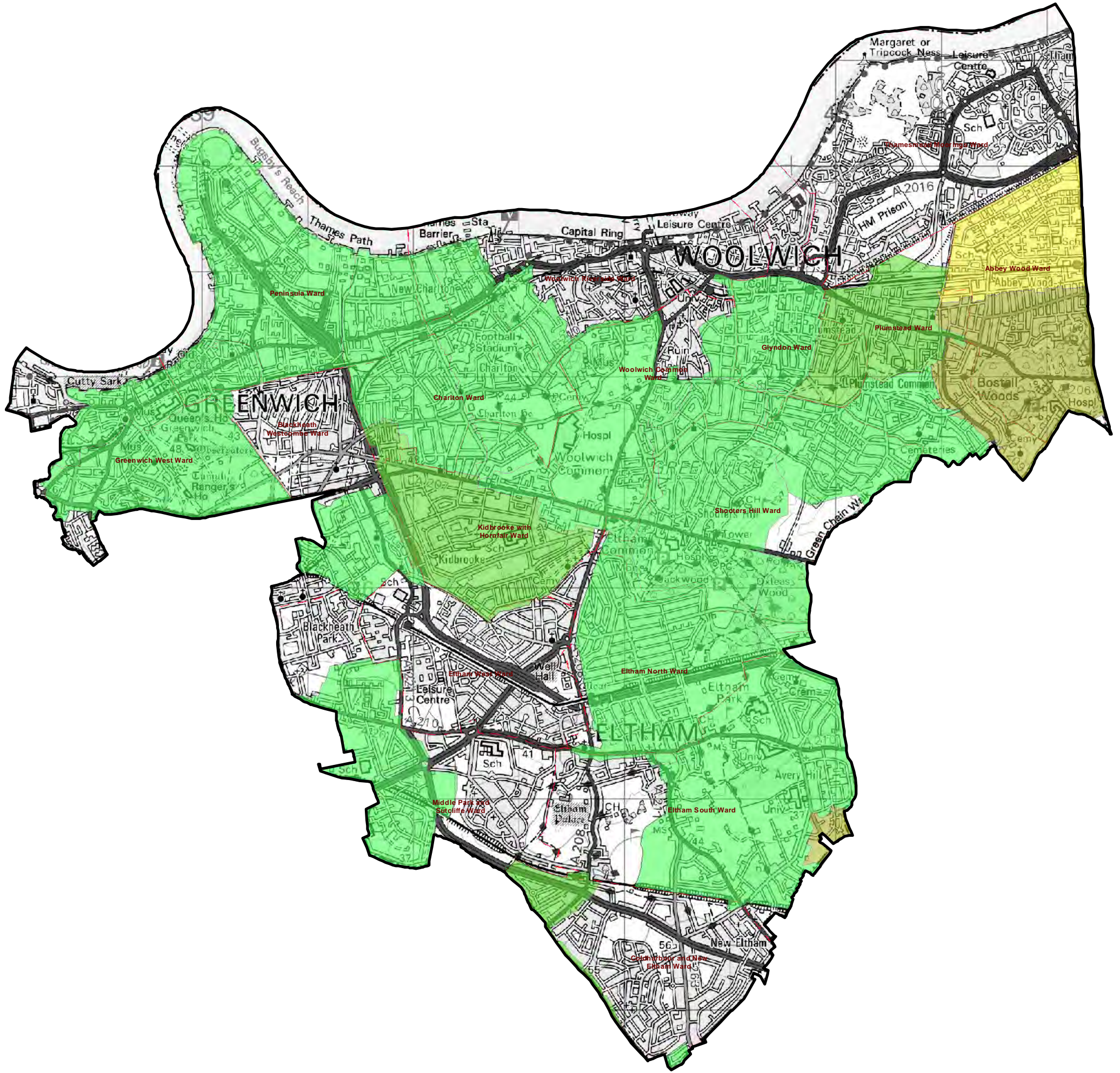


North



Legend

- Royal Borough of Greenwich
- Sewer Flood Records**
- None
- 1-5
- 6-10
- 11-20
- 21-50
- 51-100
- Greenwich Wards



35 Perrymount Road
 HAYWARDS HEATH
 West Sussex
 RH16 3BW
 United Kingdom



www.jbaconsulting.com

- t +44 (0)1444 473 652
- f +44 (0)8458 627 772
- e info@jbaconsulting.com

Offices at Colehill, Doncaster, Edinburgh, Exeter,
 Haywards Heath, Limerick, Newcastle, Newport, Saltire, Skipton,
 Tadcaster, Thirsk, Wallingford and Warrington

for

ROYAL BOROUGH OF GREENWICH Sewer flooding

Contains Ordnance Survey data © Crown copyright and database right 2015.
 This document is the property of Jeremy Benn Associates Ltd. It shall not be reproduced in whole or in part, nor disclosed to a third party, without the permission of Jeremy Benn Associates Ltd.