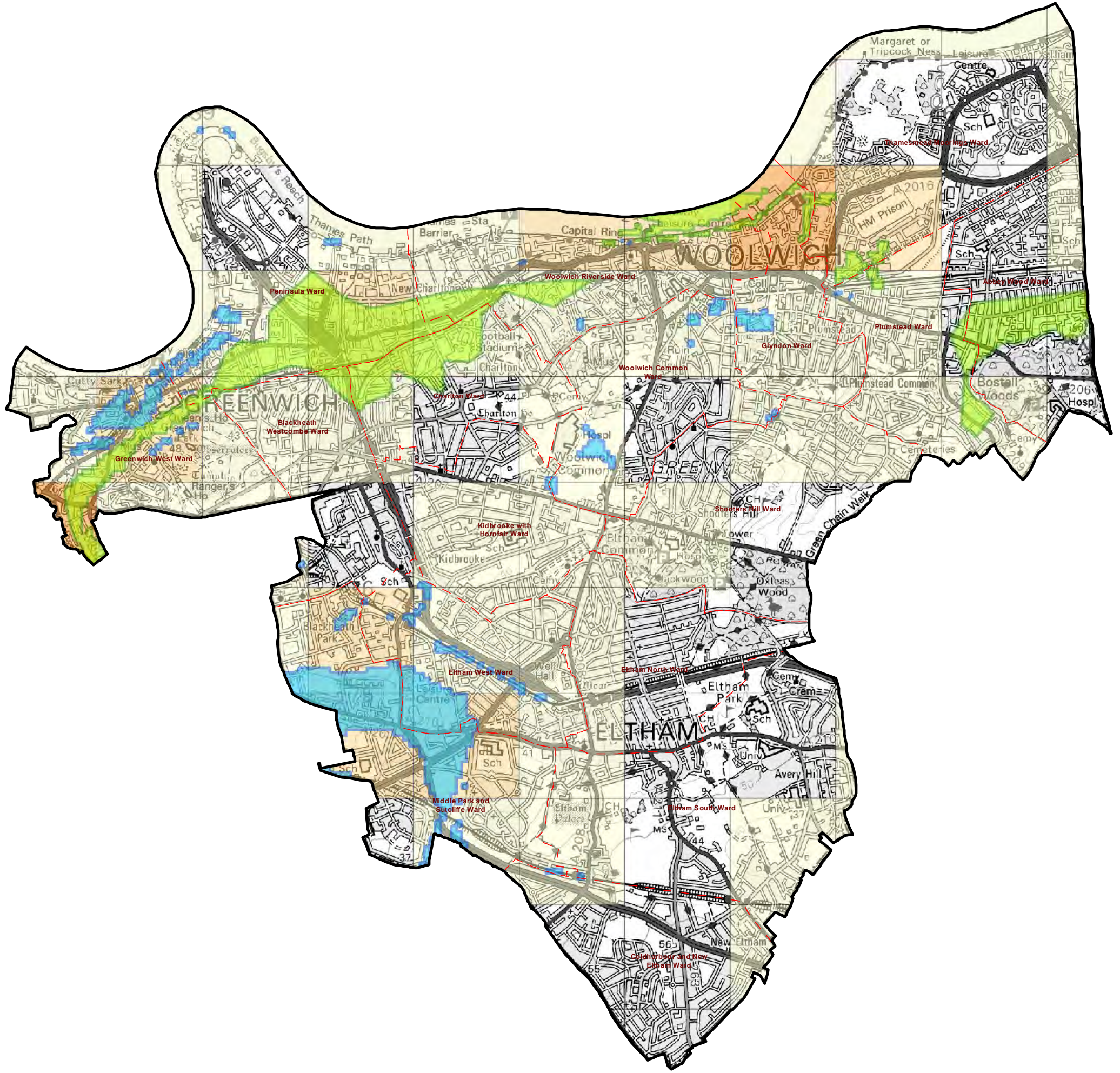


North



Legend

	Royal Borough of Greenwich	Areas Susceptible to Ground Water Flooding (ASGW)	
	Greenwich Wards		>= 75%
Potential Elevated Groundwater			>= 50% < 75%
	Consolidated Aquifer		>= 25% < 50%
	Permeable Superficial Deposits		< 25%



35 Perrymount Road
HAYWARDS HEATH
West Sussex
RH16 3BW
United Kingdom



www.jbaconsulting.com

t +44 (0)1444 473 652
f +44 (0)8458 627 772
e info@jbaconsulting.com

Offices at Colehill, Doncaster, Edinburgh, Exeter,
Haywards Heath, Limerick, Newcastle, Newport, Saltire, Skipton,
Tadcaster, Thirsk, Wallingford and Warrington

for

ROYAL BOROUGH OF GREENWICH Areas Susceptible to Ground Water Flooding

Contains Ordnance Survey data © Crown copyright and database right 2015.
This document is the property of Jeremy Benn Associates Ltd. It shall not be reproduced in whole or in part, nor disclosed to a third party, without the permission of Jeremy Benn Associates Ltd.